

THE FOURTEENTH ANNUAL

# OKLAHOMA ANGUS



*Saturday, April 20th, 2013*  
*Stillwater, Oklahoma*

SEVENTY ANGUS LOTS

*Sponsored by the Oklahoma Angus Association*



# OKLAHOMA ANGUS *Gathering*

**SATURDAY, APRIL 20  
STILLWATER, OKLAHOMA**

**12 noon** At the Oklahoma State University Purebred Beef Cattle Center  
... located 3 miles west of Stillwater on Hwy. 51 (14 miles east of I-35)

## **70 Registered Angus Lots**

**FALL BRED HEIFERS, FANCY SHOW & DONOR PROSPECTS,  
DONOR FLUSHES, EMBRYOS, SPRING & FALL COW/CALF PAIRS,  
SEMEN**

### **Sale Day Phones**

Matt Sims cell (405) 641-6081; Eddie Sims cell (580) 595-1626;  
OSU Purebred Center (405) 744-2121

### **Motel Accommodations**

LaQuinta Inn and Suites, 5285 West 6th Avenue, Stillwater, (405) 564-0599;  
Holiday Inn Express, 715 South Country Club Road, Stillwater, (405) 372-2445

### **Air Transportation**

Stillwater Municipal Airport has complete services and facilities to accommodate any size aircraft. Terminals at Oklahoma City and Tulsa are served by most major airlines.

### **Sale Manager**



Matt Sims (405) 641-6081, cell / text  
1019 Waterwood Pkwy, Suite D  
Edmond, OK 73034  
E-mail: matt@mcsauction.com  
www.mcsauction.com

*Sale sponsored by the Oklahoma Angus Association*

If you are unable to attend the sale for any reason, internet bidding is available via the LiveAuctions.tv website. Live audio and live video will allow registered buyers to bid on animals just as if they were present at the sale. Please visit [www.LiveAuctions.tv](http://www.LiveAuctions.tv) to create an account and request a buyer number. Instructions are available to walk you through the account set up process. Buyers who would like to bid via the internet must register with LiveAuctions.tv two days prior to the sale. If you have questions, e-mail: [brad@LiveAuctions.tv](mailto:brad@LiveAuctions.tv)



### **Noted Sale Guests**

John Pfeiffer, Director, American Angus Association  
Dr. Clint Rusk, Head of Department of Animal Science, Oklahoma State University  
Dr. Robert Totusek and Don Wagner, Emeritus Heads of Animal Science Department, Oklahoma State University  
Dr. Mark Johnson and Jeff Mafi,  
Oklahoma State University Purebred Beef Cattle Center  
Tim Stidham, Oklahoma Beef, Inc.  
Mike Frey, President, Oklahoma Cattlemen's Association

### **Sale Staff**

Eddie Sims, Sale Consultant / Auctioneer — (580) 492-4590; (580) 595-1626 c  
Matt Sims, Sale Manager / Auctioneer — (405) 641-6081 c  
Matt Caldwell, *Angus Journal* — (913) 755-1105 c  
Chisolm Kinder, *Oklahoma Cowman* — (405) 235-4391; (405) 747-4683 c  
Doug Paul, *The Stock Exchange* — (405) 820-3982 c  
Robbie Schacher, Schacher Auction Service — (817) 219-0102 c

*EPDs were current 4/4/13, as reported by  
the American Angus Association.  
The most current EPDs can be viewed at [www.angus.org](http://www.angus.org)*

*Sale catalog and advertising:  
Prepared by MCS Auction & Specialized Marketing (405) 641-6081;  
Produced by Southwest TypeStyles (405) 381-3591*

## 2013 OKLAHOMA ANGUS GATHERING BREEDERS

- ◆ **B&M ANGUS** Edmond, OK — (405) 341-8015
- ◆ **CLIFF SPRINGS RANCH** Stillwater, OK — (405) 372-3750
- ◆ **CMC ANGUS CATTLE CO.** Miami, OK — (918) 961-0946
- ◆ **COVENANT FARMS** Cashion, OK — (405) 830-3916
- ◆ **DIAMOND HILL CATTLE** Newcastle, OK — (405) 520-5846
- ◆ **FREY, CLARENCE** Mulhall, OK — (580) 455-2527
- ◆ **FREY, MIKE** Kingfisher, OK — (405) 375-6225
- ◆ **GREEN, KATIE** Grove, OK — (918) 323-5801
- ◆ **HENRICKS, BRADEN** Anadarko, OK — (405) 574-4915
- ◆ **JE RANCH FOUNDATION** Blanchard, OK — (918) 323-5801
- ◆ **KRAUSE H2O FOWL ANGUS FARM** Ada, OK — (580) 332-5838
- ◆ **LUCKY 7 RANCH** Geary, OK — (405) 884-2133
- ◆ **MARLOW, MIKE** Perkins, OK — (405) 880-0108
- ◆ **PFEIFFER ANGUS FARMS** Mulhall, OK — (405) 649-2425
- ◆ **POLLARD FARMS, LLC** Waukomis, OK — (580) 758-1464
- ◆ **RUTLEDGE ANGUS** Stillwater, OK — (405) 372-2393
- ◆ **STRATE FAMILY CATTLE** Fairmont, OK — (580) 747-2329

## OKLAHOMA ANGUS ASSOCIATION

### 2013 – 2014 Officers & Directors

Mark Holder, *President*

Jim Davis, *Vice President*

Gaye Pfeiffer, *Secretary/Treasurer*

Jason Shepard, *Past President*

Jarold Callahan, *Executive Director*

Will Cabbage and Mark Sexton, *Northeast District*

Alan Armbruster and Kelsey Pfeiffer, *Northwest District*

Allen Johnston and Coy Farmer, *Southeast District*

Allen Barrington and Jordan Cook, *Southwest District*

Don Abernathy and Dr. Barry Pollard, *At-Large Directors*

Dear Angus Friends and Cattlemen:

On behalf of the Oklahoma Angus Association, welcome to the 14th Annual Oklahoma Angus Gathering Sale, held at the Oklahoma State University Purebred Center, west of Stillwater.

I am especially excited about this year's offering. Breeders who have attended past years' Gathering sales have had the opportunity to see outstanding Angus cattle from herds throughout the state and surrounding area.

The 2013 offering consists of a young set of productive females that are backed by the most popular genetics in the Angus breed. We have an outstanding set of bred and open heifers along with an impressive group of young pairs, all with calves at side by sale day. The flushes and embryo matings being offered are second to none, and be sure to take a look at the semen offering.

The purpose of this sale is to provide a marketing outlet for the membership of the Oklahoma Angus Association. We encourage everyone to take advantage of what has been among the top state sales anywhere in the country.

I would like to extend my sincere thanks to Mark Johnson, Jeff Mafi and their crew at OSU for the preparation of the Beef Cattle Center and for hosting this annual event. It is my pleasure to continue working with Oklahoma Angus breeders while coordinating this sale, and I am very pleased, as I know you will be, with the offering assembled for Saturday, April 20th.

If you have any questions or if I may be of assistance prior to or at sale time, please give me a call.

Sincerely,



Matt C. Sims

MCS Auction, LLC

The  
Gathering



PF 5682 New Design 1538 Lot 1



SAV Bismarck 5682 Sire of Lots 1, 2, 31 & 40



PF 582 Abigale 1521 Lot 2

# Fall Bred Heifers ...Lots 1-16

Lot 1

## PF 5682 New Design 1538

CALVED: 9/7/11 ♦ COW: 17073882 ♦ TATTOO: 1538

# + GAR Grid Maker  
+ SAV Bismarck 5682  
SAV Abigale 0451

# Basin Franchise P142  
+ PF P142 New Design 9531  
+ GAR New Design 930

#GDAR Traveler  
GAR Precision 2536  
#Schoenes Fix It 826  
SAV Abigale 6062

#CA Future Direction 5321  
Basin Chloe 812L  
#B/R New Design 036  
GAR Precision 2536

SWEAN	+31.61
SPEEDLOT	+36.82
SGRID	+40.55
SBEEF	+72.80

♦ Pollard Farms, LLC

This powerful bred heifer and donor prospect is a granddaughter of GAR New Design 930, who was an exceptional producer for Pollard, Express and Limestone before she sold in the 2008 Express Big Event to SandPoint Angus for \$95,000. Full sisters to 930 include the \$320,000 GAR New Design 1200, dam of the Pollard and Express herd sire Rito 5118; the \$250,000 GAR New Design 80; and GAR New Design 1779, the former \$150,000 half interest top selling female at Vintage. In the 2008 Pollard sale, heifer calf pregnancies from 930 sold for \$11,000, \$10,000 and \$8,000. Two 930 clones sell as Lots 52 and 53.

1538 traces top and bottom to GAR 2536, who has established herself as the most consistent purveyor of carcass genetics in the Angus breed. The +.91 REA EPD ranks in the top 5% of the breed.

♦ A.I. 12/8/12 to Hoover Dam. Safe in calf, due 9/17/13.

BW	WW	YW	MILK	MARB	REA
+1.3	+54	+95	+28	+.54	+.91

Lot 2

## PF 5682 Abigale 1521

CALVED: 9/3/11 ♦ COW: 17073892 ♦ TATTOO: 1521

# + GAR Grid Maker  
+ SAV Bismarck 5682  
SAV Abigale 0451

# Bon View New Design 1407  
+ VAR Abigale 9328  
+ RR Abigale 619

#GDAR Traveler  
GAR Precision 2536  
#Schoenes Fix It 826  
SAV Abigale 6062

#B/R New Design 036  
Bon View Pride 664  
#BCC Bushwacker 41-93  
SAV Abigale 0451

SWEAN	+36.73
SPEEDLOT	+32.23
SGRID	+43.32
SBEEF	+74.08

♦ Pollard Farms, LLC

The granddam of 1521 is a maternal sister to the popular Genex sire SAV Bismarck 5682 (who is also the sire of 1521) and to Select Sires' SAV Mandan. Her great-granddam's first 18 progeny at Schaff's sold for \$266,150, where her dam produced 68 progeny that sold for \$469,750, ranking these females as two of the all-time top income producers at Schaff's Angus Valley.

♦ A.I. 12/24/12 to EXAR Upshot 0562B. Safe in calf, due 10/3/13.

BW	WW	YW	MILK	MARB	REA
-1.4	+51	+90	+27	+.64	+.79

**Lot 3** **JHF Miss CC Explorer 1189**

CALVED: 9/6/11 ♦ COW: 17236776 ♦ TATTOO: 1189

Connealy Consensus  
**Connealy Consensus 7229**  
Blue Lilly of Conanga 16

#Bon View New Design 1407  
**EXAR Miss Explorer 2516**  
ALC Miss Explorer 9483

#KMK Alliance 6595 187  
Blinda of Conanga 004  
#Woodhill Admiral 77K  
Blue Cash of Conanga 6020  
#B/R New Design 036  
Bon View Pride 664  
#Leachman Explorer  
Warrior Stacker 526

SWEAN	+31.14
SPEEDLOT	+30.33
SGRID	+40.00
SBEEF	+79.64

BW	WW	YW	MILK	MARB	REA
1+2.6	1+50	1+88	1+14	1+.70	1+.50

♦ *Mike Frey*

This daughter of the popular Connealy Consensus 7229 shows nicely balanced EPDs across the board.

♦ A.I. 12/3/12 to EXAR Upshot 0562B. RE. to CF SS Objective 6411. Ultrasounded safe to A.I. service with a bull calf.



JHF Miss CC Explorer 1189 Lot 3



**Connealy Consensus 7229**

Sire of Lots 3 & 4;  
several other progeny sell

**Lot 4** **MDF 7229 Georgina 1182**

CALVED: 9/1/11 ♦ COW: 17236775 ♦ TATTOO: 1182

Connealy Consensus  
**Connealy Consensus 7229**  
Blue Lilly of Conanga 16

+ SAV Mandan 5664  
**+ MDF CH Georgina 0968**  
+ Champion Hill Georgina 2323

#KMK Alliance 6595 187  
Blinda of Conanga 004  
#Woodhill Admiral 77K  
Blue Cash of Conanga 6020  
#SAV 8180 Traveler 004  
SAV Abigale 0451  
#Leachman Saugahatchee 3000C  
LLA Georgina 419

SWEAN	+28.63
SPEEDLOT	+43.50
SGRID	
SBEEF	

BW	WW	YW	MILK	MARB	REA
+2.1	+58	+102	+19		

♦ *Mike Frey*

1182 traces to the foundation of the Georgina family, Lyons Georgina 2165, who produced the most famous Georgina, LLA Georgina 419, the great-granddam of 1182. LLA Georgina 419 is the famous Champion Hill foundation female who was the 2001 and 2002 ROV Embryo Dam of the Year as well as the two-time Atlantic National ROV Produce of Dam award winner. LLA Georgina 419 was also a past ROV Reserve Intermediate Heifer of the Year. Her impressive list of progeny have established her as one of the all-time great producing daughters of the high marbling and high maternal Pathfinder Sire GAR Sleep Easy 1009.

1182 posted ratios of 104 at weaning and 105 at a year.

♦ A.I. 12/2/12 to EXAR Upshot 0562B. RE. to CF SS Objective 6411 (17224907). Ultrasounded safe to 6411 with a bull calf.



LLA Georgina 419 Great-granddam of Lot 4

**Lot 5** **Missy 6807 Allison AK84**

CALVED: 1/2/11 ♦ COW: +16896528 ♦ TATTOO: AK84

#QAS Traveler 23-4  
**#DHD Traveler 6807**  
#Bemindful Maid DHD 0807

#N Bar Emulation EXT  
**JK Allisons Pride EXT**  
Davis Edwina 842

#Band 234 of Ideal 3163  
QAS Blackbird Eve 601 1  
#PBC 707 1M F0203  
Bemindful Maid of RR 1079  
#Emulation N Bar 5522  
N Bar Primrose 2424  
# + R&J Maxima  
Ballantrae Edwina 17N

SWEAN	+17.24
SPEEDLOT	+13.63
SGRID	+18.29
SBEEF	+51.47

BW	WW	YW	MILK	MARB	REA
1+2.6	1+34	1+67	1+15	1+.18	1+.24

♦ *Krause H20 Fowl Angus Farm*

AK84 is a direct ET daughter of DHD Traveler 6807 and the now-deceased donor dam JK Allisons Pride EXT, who generated over \$100,000 in progeny sales. AK84 phenotypically exhibits the traits her sire is famous for—femininity, capacity, fleshing ability and udder quality. She transmits milk and future WDA into her progeny.

AK84 was successfully shown at the county level, placing first on two occasions and once named reserve grand champion. Full ET sisters in past Gathering sales commanded \$12,400 in 2011 and \$11,100 in 2009. AK84 is also a full ET sister to Lot 6 and to Forever Allison Missy 6807, dam of the Lot 28 embryos selling and dam of Lot 44.

♦ A.I. 1/27/13 to SAV Final Answer 0035. Safe in calf.



Missy 6807 Allison AK84 Lot 5



Allison's Marvel 6807 JK84 Lot 6

Lot 6

**Allison's Marvel 6807 JK84**

CALVED: 1/3/11 ♦ COW: +16902324 ♦ TATTOO: JK84

#OAS Traveler 23-4  
#DHD Traveler 6807  
#Bemindful Maid DHD 0807

#N Bar Emulation EXT  
JK Allison's Pride EXT  
Davis Edwina 842

#Band 234 of Ideal 3163  
QAS Blackbird Eve 601 1  
#PBC 707 1M F0203  
Bemindful Maid of RR 1079  
#Emulation N Bar 5522  
N Bar Primrose 2424  
# + R&J Maxima  
Ballantrae Edwina 17N

SWEAN	+17.24
SPEEDLOT	+13.63
SGRID	+18.29
SBEEF	+51.47

♦ Krause H20 Fowl Angus Farm

JK84 is a flush sister to AK84, Lot 5, and is a direct ET daughter of 6807 and the now-deceased donor dam JK Allison's Pride EXT, who generated over \$100,000 in progeny sales. While these tremendous full sibs are genetically identical, this heifer phenotypically most resembles her maternal grandsire, EXT. Her mating to Final Answer cannot go wrong.

BW	WW	YW	MILK	MARB	REA
+2.6	+34	+67	+15	+18	+24

♦ A.I. 1/28/13 to SAV Final Answer 0035. Safe in calf.



Ms Objective Design 152 Lot 7

Lot 7

**Ms Objective Design 152**

CALVED: 3/5/11 ♦ COW: 16952708 ♦ TATTOO: 1152

#SS Traveler 6807 T510  
#SS Objective T510 OT26  
SS Miss Rita R011 7R8

#GAR Retail Product  
SF Ms Retail Design 652  
CPPR Ms EXT Design 452

#DHD Traveler 6807  
#SS Miss Hi Spade A114  
SS Rito Rito R76 R011  
SS Miss Ultress U56

#GAR Precision 1680  
+GAR EXT 4927  
#N Bar Emulation EXT  
+CPPR Erica New Design 4752

SWEAN	+34.81
SPEEDLOT	+45.43
SGRID	+40.18
SBEEF	+58.01

♦ Cliff Springs Ranch

This female is from the top of Cliff Springs Ranch's replacements. She combines Retail Product and Objective to yield superior numerical balance for all measurable traits.

BW	WW	YW	MILK	MARB	REA
+1.9	+54	+102	+32	+54	+58

♦ A.I. 10/13/12 to EXAR Upshot 0562B. RE. 1/26/13 to 3/5/13 to VNAR In Focus 8097. Safe in calf.



S Bar K Lady 4047 211 Lot 8

Lot 8

**S Bar K Lady 4047 211**

CALVED: 2/1/11 ♦ COW: 16886402 ♦ TATTOO: 211

#CA Future Direction 5321  
+R/M Ironstone 4047  
B/R Ruby of Tiffany 5144

#GAR Solution  
S Bar K Delilah 3513  
CLA Integrity 2905

#GAR Precision 1680  
CA Miss Power Fix 308  
#B/R New Design 323  
B/R Ruby of Tiffany 346  
#SS Traveler 6807 T510  
+GAR New Design 50  
# +GAR Integrity  
GAR Enhancer 2903

SWEAN	+28.64
SPEEDLOT	+34.88
SGRID	+46.59
SBEEF	+72.63

♦ Cliff Springs Ranch

This female offers outstanding carcass EPDs and balanced production EPDs.

BW	WW	YW	MILK	MARB	REA
+2.0	+53	+93	+22	+83	+64

♦ A.I. 9/3/12 to SS Incentive 9J17. RE. 12/30/12 to 3/5/13 to VNAR In Focus 8097. Safe in calf.

Lot 9

**CF 1961 Erica 3811**

CALVED: 2/5/11 ♦ COW: 17201670 ♦ TATTOO: 3811

# + SAF 598 Bando 5175  
# + HSAF Bando 1961  
+ JKS Miss Cheyenne 196

# Bon View Bando 598  
+ SAF Royal Lass 1002  
# N Bar Emulation EXT  
+ Magic Meadow Miss Cheyenne

SWEAN	+29.41
SPEEDLOT	+28.90
SGRID	
SBEEF	

TC Forefront 2102  
TC Erica Lady 6141  
+ TC Erica Lady 1049

# Connealy Forefront  
# TC Georgina 8061  
# Rito 616 of 4B20 6807  
# TC Erica Lady 3004

BW	WW	YW	MILK	MARB	REA
+0.5	+48	+86	+20		

♦ Clarence Frey

Low birth weight female with eight Pathfinders in three generations.

♦ A.I. 12/3/12 to Connealy Final Solution. Ultrasounded safe with a bull calf.



CF 1961 Erica 3811 Lot 9

Lot 10

**MDF 1961 Datey 1180**

CALVED: 9/6/11 ♦ COW: 17236774 ♦ TATTOO: 1180

# + SAF 598 Bando 5175  
# + HSAF Bando 1961  
+ JKS Miss Cheyenne 196

# Bon View Bando 598  
+ SAF Royal Lass 1002  
# N Bar Emulation EXT  
+ Magic Meadow Miss Cheyenne

SWEAN	+27.85
SPEEDLOT	+32.43
SGRID	+22.11
SBEEF	+71.57

# KCF Bennett Total  
# MDF Datey Total 0754  
MDF Miss Dateline 0270

# Sitz Alliance 6595  
EXT of Conanga 6790  
# Vermilion Dateline 7078  
MDF Miss Prompter 105

BW	WW	YW	MILK	MARB	REA
+2.4	+48	+89	+25	1+.35	1+.26

♦ Mike Frey

Out of a Pathfinder Dam, 1180 posted a ratio of 103 for yearling weight.

♦ A.I. 12/2/12 to Dameron First Impression. P.E. to CF SS Objective 6411 (17224907). Ultrasounded safe to 6411 with a heifer calf.



HSAF Bando 1961 Sire of Lots 9, 10, 30 & 60

Lot 11

**MDF Iron Girl 1185**

CALVED: 9/6/11 ♦ COW: 17238824 ♦ TATTOO: 1185

# TC Gridiron 258  
SAV Iron Mountain 8066  
SAV Madame Pride 3249

# + GAR Grid Maker  
# TC Blackbird 7049  
# SAV 8180 Traveler 004  
SAV Madame Pride 8264

SWEAN	+24.39
SPEEDLOT	+30.07
SGRID	+30.87
SBEEF	+69.63

TC Forefront 0148  
# MDF Forefront Girl 0272  
MDF Fly Girl 735

# Connealy Forefront  
# TC Ellnora 2006  
MDF Fly Boy 536  
MDF Miss Mega Traveler 540

BW	WW	YW	MILK	MARB	REA
+2.1	+48	+87	+13	1+.57	1+.18

♦ Mike Frey

The dam of this Iron Mountain daughter is a Pathfinder Dam.

♦ A.I. 12/2/12 to Connealy Impression. P.E. to CF SS Objective 6411. Ultrasounded safe with a heifer calf, likely from A.I. service.



SAV Iron Mountain 8066 Sire of Lot 11

Lot **12**

**BLH Burgess 158**

CALVED: 9/25/11 ♦ COW: 17212417 ♦ TATTOO: 158

SAV Payroll 5281  
**PVF ALL Payday 729**  
PVF Blackbird 201

+ EXAR Pit Boss 409  
**HCC PB Burgess 6253**  
+ ACF Burgess 1080

♦ *Braden Henricks*

Big EPD spread from BW to YW and strong Milk EPD.

♦ A.I. 12/17/12 to SAV Brilliance 8077. Safe in calf.

#SAV 8180 Traveler 004  
SAV Bessie Heirress 1184  
# + PVF New Horizon 001  
PVF Blackbird 020

EXAR Sudden Impact 1537  
WK Winnie 7305  
#Basin Max 602C  
+ Brost Burgess 548

SWEAN	+28.70
SPEEDLOT	+43.98
SGRID	
SBEEF	

BW	WW	YW	MILK	MARB	REA
+2.4	+57	+102	+28		

Lot **13**

**COV Retail Girl 1183**

CALVED: 8/14/11 ♦ COW: 16998037 ♦ TATTOO: 1183

#BAR EXT Traveler 205  
**CRA Bextor 872 5205 608**  
CRA Lady Jaye 608 498 S Easy

#GAR Predestined  
**COV Predestined Design 9102**  
+ GAR Retail Product 1605

♦ *Covenant Farms*

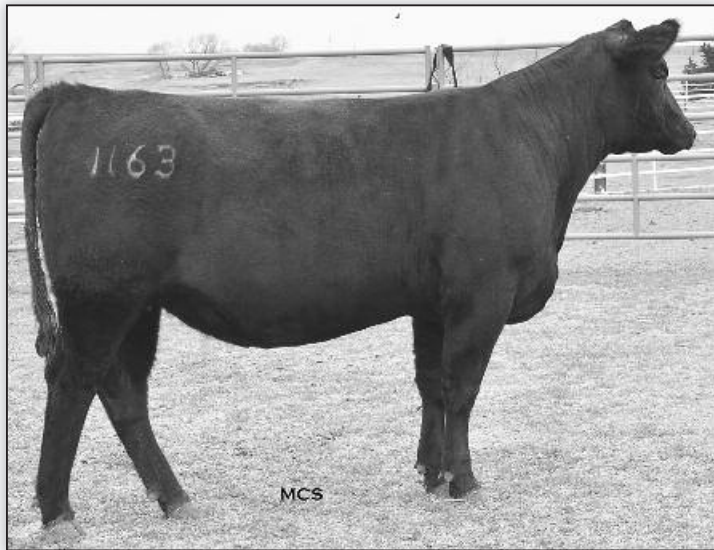
♦ A.I. 11/13/12 to SAV Beacon 0008. PE. 11/28/12 to 4/15/13 to JK16 Network (16897308).

#N Bar Emulation EXT  
#BAR Queen Traveler 3015  
# + GAR Sleep Easy 1009  
HHF 917 Lady 975 498

#B/R New Design 036  
# + GAR EXT 4206  
#GAR Retail Product  
+ GAR New Design 601

S:	D:		
SWEAN	+46.14	SWEAN	+30.25
SPEEDLOT	+35.82	SPEEDLOT	+27.92
SGRID	+46.17	SGRID	+45.24
SBEEF	+60.10	SBEEF	+77.00

BW	WW	YW	MILK	MARB	REA
+1.5	+51	+93	+34	+0.71	+0.81
I+3.6	I+45	I+84	I+27	I+0.95	I+0.40



MDF Miss Worthy 1163 Lot 14

Lot **14**

**MDF Miss Worthy 1163**

CALVED: 10/17/11 ♦ COW: 17477861 ♦ TATTOO: 1163

#SAV Net Worth 4200  
**SAV Net Worth 8252**  
SAV Emblynette 5310

# Bon View New Design 1407  
**MDF Miss Mega Design 0459**  
MDF Miss Mega Traveler 540

♦ *Mike Frey*

♦ A.I. 12/2/12 to Connealy Final Product. PE. to CF SS Objective 6411. Ultrasounded safe to A.I. service with a bull calf.

#SAV 8180 Traveler 004  
+ SAV May 2410  
# + SAF 598 Bando 5175  
SAV Emblynette 1058

#B/R New Design 036  
Bon View Pride 664  
#Rito 8E8 of 5H11 Traveler  
MDF Miss Mega Thor 013

SWEAN	+22.41
SPEEDLOT	+28.37
SGRID	+36.46
SBEEF	+74.20

BW	WW	YW	MILK	MARB	REA
+3.0	+44	+84	+27	I+.66	I+.37

Lot **15**

**MDF Miss Worthy 1165**

CALVED: 10/11/11 ♦ COW: 17477862 ♦ TATTOO: 1165

#SAV Net Worth 4200  
**SAV Net Worth 8252**  
SAV Emblynette 5310

# Mytty In Focus  
**MDF Miss Mega Focus 0864**  
MDF Miss Mega Design 0564

♦ *Mike Frey*

♦ A.I. 12/4/12 to Connealy Final Product. PE. to CF SS Objective 6411. Ultrasounded safe to A.I. service.

#SAV 8180 Traveler 004  
+ SAV May 2410  
# + SAF 598 Bando 5175  
SAV Emblynette 1058

#SAF Focus of ER  
Myyty Countess 906  
#Bon View New Design 1407  
MDF Miss Mega EXT 9840

SWEAN	+20.72
SPEEDLOT	+28.56
SGRID	
SBEEF	

BW	WW	YW	MILK	MARB	REA
+2.8	+41	+83	+26		

Lot **16**

**MDF Miss Design 1168**

CALVED: 10/11/11 ♦ COW: 17236773 ♦ TATTOO: 1168

#SAV Net Worth 4200  
**SAV Net Worth 8252**  
SAV Emblynette 5310

# Bon View New Design 1407  
**MDF Miss Mega Design 0564**  
MDF Miss Mega EXT 9840

♦ *Mike Frey*

A maternal sister to the dam of Lot 15, 1168 recorded an individual weaning weight ratio of 108.

♦ PE. to CF SS Objective 6411 (17224907). Ultrasounded safe with a bull calf.

#SAV 8180 Traveler 004  
+ SAV May 2410  
# + SAF 598 Bando 5175  
SAV Emblynette 1058

#B/R New Design 036  
Bon View Pride 664  
#N Bar Emulation EXT  
MDF Miss Mega Thor 013

SWEAN	+31.50
SPEEDLOT	+22.70
SGRID	
SBEEF	

BW	WW	YW	MILK	MARB	REA
+2.0	+49	+81	+27		





PF 5682 Empress 2190 Lot 17



CMC 4111 Lass 6113 Dam of Lot 18



Strate's Loco S264 Lot 18

# Open Heifers ...Lots 17-23

Show, Donor &  
Brood Cow Prospects

## Lot 17 PF 5682 Empress 2190

CALVED: 2/27/12 ♦ COW: +17200339 ♦ TATTOO: 2190

# +GAR Grid Maker  
+SAV Bismarck 5682  
SAV Abigale 0451

#SS Objective T510 0T26  
+PF 0T26 Empress 8095  
+OSU Empress 5179

#GDAR Traveler  
GAR Precision 2536  
#Schoenes Fix It 826  
SAV Abigale 6062

#SS Traveler 6807 T510  
SS Miss Rita R011 7R8  
#N Bar Emulation EXT  
+OSU Empress 6188

SWEAN	+31.80
SPEEDLOT	+40.75
SGRID	+36.57
SBEEF	+69.29

BW	WW	YW	MILK	MARB	REA
1+1.1	1+56	1+99	1+27	1+.40	1+.77

♦ Pollard Farms, LLC

The granddam of 2190, Empress 5179, was selected to join the donor herd at Pollard Farms as the \$11,000 top selling two year old of the 2007 OSU Cowboy Classic Sale. In the 1990s, the famous granddam of 5179, DF Empress 6079, gained national recognition as a result of producing several sons which would become grand champions in the show ring. This cow was the Angus Roll of Victory Embryo Transplant Dam of the Year in 1994. Her sons include OSU Precision, Grand Champion bull at the All-American Angus Futurity and Reserve Champion at the North American in 1993; OSU Ultra, Reserve Grand Champion Angus bull at Denver in 1994 before being named Grand Champion at the National Western in 1995; and OSU Panama, Grand Champion bull at the 1996 All-American Angus Futurity and Tulsa State Fair and at the 1997 Western National Futurity in Reno, NV. 6079 was the first female to produce all of the Best Six Head at the North American and all three bulls in the Champion Pen of Three at the National Western. Many of the most productive, highest income producing females in the OSU purebred herd are descendants of Empress 6079.

♦ Sells open.

## Lot 18 Strate's Loco S264

CALVED: 3/16/12 ♦ COW: 17303193 ♦ TATTOO: S264

EXAR Sudden Impact 1537  
+EXAR Totally Tuned 71281  
EXAR Arkdale Pride 1001

#G13 Structure  
CMC 4111 Lass 6113  
CMC P408 Lass 4111

# +Northern Improvement 4480 GF  
+BLR Blushing Pride 9097  
#Bon View New Design 1407  
WK Arkdale Pride 9353

#TC Stockman 365  
#G13 Traveler 9428  
#Bon View New Design 1407  
TJ Blackbird Lass P408

SWEAN	+29.78
SPEEDLOT	+24.28
SGRID	+28.23
SBEEF	+63.42

♦ Strate Family Cattle

This top yearling show and donor prospect possesses the same flawless phenotype that we have come to expect from the Totally Tuned progeny. Her dam was selected from CMC Angus as one of the top bred heifers in their June 2007 sale.

♦ Sells open.

BW	WW	YW	MILK	MARB	REA
1+1.9	1+48	1+82	1+25	1+.29	1+.36

EXAR Totally Tuned 71281  
Sire of Lot 18





MCS

Rutledge Sylvan 52 Lot 19

Lot **19**

**Rutledge Sylvan 52**

CALVED: 3/30/12 ♦ COW: 17379736 ♦ TATTOO: 52

# + BT Right Time 24J  
**+Sinclair Grass Master**  
 # N Bar Primrose Y3051

# + GAR Expectation 4915  
**Rutledge Sylvan 55R**  
 Rutledge Sylvan 825 H

♦ **Rutledge Angus**

This top donor prospect descends from the Sylvan cow line that has been one of the most prolific in the Rutledge herd. One of their Sylvan heifers was the 1999 Grand Champion at the All-American Breeders' Futurity Super Roll of Victory Angus Show and was named Supreme Champion of the 1999 Ozark Empire Fair.

♦ **Sells open.**

# + Leachman Right Time  
 Sitz Everelda Entense 1905  
 # N Bar Emulation EXT  
 # N Bar Primrose 2429  
 # N Bar Emulation EXT  
 GAR Traveler 2421  
 + Boyd Mainstream 5006  
 Rutledge Sylvan 25

SWEAN
+28.12
SPEEDLOT
+31.51
SGRID
SBEFF

BW	WW	YW	MILK	MARB	REA
1+2.3	1+50	1+89	1+27		



MCS

B&M Tiffany 205 Lot 20

Lot **20**

**B&M Tiffany 205**

CALVED: 1/13/12 ♦ COW: 17179499 ♦ TATTOO: 205

# Sitz Upward 307R  
**EXAR Uphot 0562B**  
 # + EXAR Barbara T020

# GAR Retail Product  
**# + VAR Tiffany 7102**  
 + VAR Tiffany of Three Trees

♦ **B&M Angus**

This young donor prospect is a natural born daughter of the Pathfinder Dam and flush donor featured as Lot 25. Her impressive EPDs have been genomically enhanced by Igenity. 205 descends from the Ruby of Tiffany family that also produced the prominent sires B/R New Design 323 and B/R Ambush 28.

♦ **Sells open.**

# Connealy Onward  
 Sitz Henrietta Pride 81M  
 # ISU Imaging Q 9111  
 LCC McHenry Barbar MG382  
 # GAR Precision 1680  
 + GAR EXT 4927  
 # B/R New Design 036  
 B/R Ruby of Tiffany 155

SWEAN
+25.97
SPEEDLOT
+56.95
SGRID
+28.43
SBEFF
+91.61

BW	WW	YW	MILK	MARB	REA
+4.3	+54	+111	+33	+44	+84



EXAR Titlelist T011 Sire of Lot 21

Lot **21**

**L7AR Lady 1201**

CALVED: 1/2/12 ♦ COW: 17178315 ♦ TATTOO: 1201

# BR Midland  
**EXAR Titlelist T011**  
 EXG Blackcap R054 R3

# Schurrtop MC 2500  
**+EXG Lady T638 R3**  
 R3 Lady Yukon 9522

♦ **Lucky 7 Angus**

This show and donor prospect combines the Triple Crown winner EXAR Titlelist T011 with a productive dam that posts 1@115 for weaning weight and 2@107 for yearling weight.

♦ **Sells open.**

# Twin Valley Precision E161  
 BR Royal Lass 7036-19  
 EXAR Sudden Impact 1537  
 EXG Blackcap N145 R3  
 # Schurrtop MC  
 Schurrtop RS 1413 2153  
 # + A&B Yukon 7150  
 C&C Ms Band 576

SWEAN
+28.16
SPEEDLOT
+28.90
SGRID
+26.66
SBEFF
+67.45

BW	WW	YW	MILK	MARB	REA
1+3.4	1+48	1+86	1+30	1+.35	1+.18

Lot **22**

**PF 0137 Blackcap 2136**

CALVED: 3/5/12 ♦ COW: 17200309 ♦ TATTOO: 2136

#N Bar Emulation EXT  
+ PF N Bar Emulation EXT 0137  
TFR Ever Princess 1635

#SS Objective T510 0T26  
+ KLR Blackcap 0138  
+ GAR 1407 New Design L1084

♦ Pollard Farms, LLC

The maternal granddam of this balanced trait female is one of the top ranked Marbling EPD females of the Angus breed at +1.18. L1084 has a progeny IMF ratio of 104 on 53 head after recording individual IMF and ribeye ratios of 103 and 106, respectively, at Gardiner Angus Ranch. 2136's dam sells as Lot 35.

♦ Sells open.

#Emulation N Bar 5522  
N Bar Primrose 2424  
# + Pine Creek Traveler 124-1107  
ALC Princess 6037  
#SS Traveler 6807 T510  
SS Miss Rita R011 7R8  
#Bon View New Design 1407  
+GAR 616 Rito 1901

SWEAN	+29.57
SPEEDLOT	+36.01
SGRID	
SBEEF	

BW	WW	YW	MILK	MARB	REA
-0.7	+48	+92	+28		



GAR 1407 New Design L1084 Maternal granddam of Lot 22



COV Lumens 1281 Lot 23



SAV Beacon 0008  
Sire of 23; also the  
A.I. service sire for  
Lot 13



JH Blackbird 99  
Dam of Lot 23

Lot **23**

**COV Lumens 1281**

CALVED: 8/19/12 ♦ COW: 17293532 ♦ TATTOO: 1281

+ SAV Bismarck 5682  
SAV Beacon 0008  
SAV Madame Pride 8180

+ BC Lookout 7024  
+ JH Blackbird 99  
OSU Blackbird 3135

♦ Covenant Farms

This fancy show and donor prospect is sure to compete in the summer division. Her dam was a Division Champion at the Oklahoma and Tulsa State Fairs in 2011. If you have a young junior, 1281 would be an excellent first project with her outstanding disposition.

♦ Sells open.

S:		D:	
SWEAN	+38.02	SWEAN	+26.29
SPEEDLOT	+44.26	SPEEDLOT	+25.17
SGRID	+36.13	SGRID	+22.81
SBEEF	+79.71	SBEEF	+63.77

BW	WW	YW	MILK	MARB	REA
+2.2	+59	+103	+29	+50	+76
D: 1+2.2	1+46	1+ 82	1+20	1+.28	1+.36

# Donor Flushes & Embryos

## ...Lots 24-28



OSU Jilt 1147 Lot 24 flush donor

### Lot 24

### OSU Jilt 1147

CALVED: 2/6/11 ♦ COW: 16894572 ♦ TATTOO: 1147

#EXAR Lutton 1831  
**+EXAR Wanted 9732B**  
 Twin Eagles Blackbird 174K

+ OSU Impact 3182  
**OSU Jilt 7162**  
 OSU 23-4 Jilt 8162

♦ *JE Ranch Foundation;*  
*Katie Green*

# +Northern Improvement 4480 GF  
 EXAR Saras Dream 9809  
 #Twin Valley Precision E161  
 Summitcrest Blackbird F161  
 EXAR Sudden Impact 1537  
 #OSU 6807 Gem 5102  
 #QAS Traveler 23-4  
 OSU Miss Jilt Bando 6163

SWEAN	+25.97
SFEEDLOT	+11.31
SGRID	+22.79
SBEEF	+59.69

BW	WW	YW	MILK	MARB	REA
1+2.0	1+37	1+66	1+24	1+.32	1+.04

Selling the right to flush the Oklahoma Club Calf Association's high point heifer for the 2012-13 show season for Katie Green and family to the bull of the buyer's choice!

Jilt 1147 was named Supreme Champion or Reserve Supreme Champion 11 times and Breed Champion Angus 18 times. Additionally, she was a Division Champion at the 2012 Oklahoma State Fair, Reserve Division Champion at the 2012 Tulsa State Fair and Reserve Division Champion at the recent 2013 Oklahoma Youth Expo.

1147 descends from one of the most prolific cow families at Oklahoma State University. Combine this fact with her flawless phenotype, and it is easy to see the potential she has to produce great ones no matter how you choose to mate her.

Due to calve 5/28/13. Flush can be performed as soon as possible after calving.

### Terms of Lot 24 Flush

Flush expenses and cost of semen are the responsibility of the buyer. The buyer is guaranteed a minimum of six transferrable embryos and will receive the first 10 grade one embryos from the flush, with the buyer and seller splitting all embryos over 10 and seller paying the appropriate freezing cost for their embryos.



VAR Tiffany 7102 Lot 25 flush donor

Lot **25**

**VAR Tiffany 7102**

CALVED: 2/2/07 ♦ COW: # +15640845 ♦ TATTOO: 7102

#GAR Precision 1680  
**#GAR Retail Product**  
 + GAR EXT 4927

#B/R New Design 036  
**+VAR Tiffany of Three Trees**  
 B/R Ruby of Tiffany 155

♦ B&M Angus

#Tehama Bando 155  
 9J9 GAR 856  
 #N Bar Emulation EXT  
 GAR Traveler 641

#VDAR New Trend 315  
 B/R Blackcap Empress 76  
 VDAR Pine Drive 251  
 Tiffany BR

SWEAN	+25.10
SPEEDLOT	+30.45
SGRID	+32.78
SBEEF	+71.57

BW	WW	YW	MILK	MARB	REA
+3.0	+42	+85	+29	+.43	+.71

Selling the right to flush this Pathfinder donor and foundation Tiffany in the B&M herd.

7102 was Melvin and Betty Boling's selection from the 2011 Express Big Event Sale, where they also selected her son by 263C that posted a 904-pound adjusted weaning weight to become a resident herd sire at B&M. This prolific donor produced an Upshot daughter (selling as Lot 20) on 1/13/12, was flushed on 4/4/12 for 34 transferrable embryos, then bred back on 4/17/12 to Upshot and produced the 1/24/13 bull calf she now has at her side.

The dam of 7102 is a full sister to the Pathfinder Sire B/R New Design 323, the granddam of B/R Ambush 28, and to the BoBo Angus donor Three Trees Tiffany 1942, who produced the \$218,000-valued and top selling female in the 2009 BoBo Sale to Deer Valley.

B&M will assist the buyer in making arrangements to have the flush performed at Cross Country Genetics, Crescent, OK, any time before 6/1/13.

*Terms of Lot 25 Flush*

Flush expenses and cost of semen are the responsibility of the buyer. The buyer is guaranteed a minimum of six transferrable embryos and will receive the first 10 grade one embryos from the flush, with the buyer and seller splitting all embryos over 10; B&M will pay any appropriate freezing cost for their embryos. In the event the flush does not meet the minimum requirement, B&M will provide the necessary number of embryos from the mating of EXAR Upshot 0562B and 7102 to reach to the six embryo guarantee.



FV Miss Primrose T085 Dam of Lots 26A-26B embryos

**26** *Lot A* **Steel Force × T085 embryos**  
4 Frozen SimAngus Embryos ♦ Progeny Pedigree

CNS Dream On L186  
**SVF Steel Force S701**  
SVF Sheza Beauty L901

DHD Traveler 6807  
**FV Miss Primrose T085**  
LS Miss Primrose P153

♦ *Mike Marlow*

♦ **Selling a package of four SimAngus embryos sired by Steel Force.**

<b>S:</b>	
SAPI	+133.5
Stt	+ 68.7

BW	WW	YW	MILK	MARB	REA
+1.4	+71	+106	+17	+.08	+.72

(Simmental EPDs)

**26** *Lot B* **Hot Rod × T085 embryos**  
3 Frozen Embryos ♦ Progeny Pedigree

#Famous 7001  
**Gambles Hot Rod**  
+ Champion Hill Lady 703

#DHD Traveler 6807  
**+ FV Miss Primrose T085**  
+ LS Miss Primrose P153

♦ *Mike Marlow*

♦ **Selling a package of three embryos sired by Gambles Hot Rod.**

<b>S:</b>		<b>D:</b>	
SWEAN	+22.59	SWEAN	+26.38
SPEEDLOT	+31.51	SPEEDLOT	+26.95
SGRID	+26.58	SGRID	+25.94
SBEFF	+56.22	SBEFF	+62.25

BW	WW	YW	MILK	MARB	REA	
+5.0	+50	+89	+14	+.31	+.22	
D:	+1.6	+42	+82	+22	+.28	+.47

*Lots 26A & 26B Embryos*

An opportunity to own embryo progeny from FV Miss Primrose T085, a powerful donor that blends Traveler 6807 with the \$50,000 top-valued selection of Paul's Livestock in Washington through the 2004 Fairview Angus Sale in Montana. The granddam of Primrose T085, Primrose E60, headlined the 2004 Fairview Angus Sale and is a direct daughter of the now-deceased \$100,000 Express Ranches, BAAR USA and Vintage Angus donor Primrose 2424 sired by the \$160,000 Pathfinder Sire Leachman Right Time. A maternal sister to the dam of T085 was the \$36,000 top-selling female of the 2004 Fairview Sale, joining her dam in the Paul's Livestock herd, while another maternal sister anchors the Primrose family in the Sundberg Farms and Hunter Farms Genetics programs in Illinois.

Maternal brothers to the granddam of Primrose T085 include the legendary ABS Global sire EXT and the Genex/CRI sires Special Design and Precision J239 as well as the \$30,000 Wilson Cattle Company sire Solid Gold and New Look 2971. Maternal sisters to the granddam of Primrose T085 include the \$60,000 Vintage Angus and Monarch Farms donor Primrose 1247, the \$70,000-valued and \$54,000-valued featured Primroses in the Three Trees Ranch program in Georgia, the \$35,000 top-selling full-interest cow of the 2004 Anderson Circle Dispersal featured in the Ray-Mar herd in California, the \$34,000 foundation Primrose in the Sterling Hunter program in Michigan and the \$70,000 top-valued selection of Limestone through the 2004 Southern Cattle Company Sale in Florida.

2011  
**TULSA STATE FAIR**



**Carter's Lady X128**  
Dam of Lots 27A-27B-27C  
buyer's choice embryos



**HCC Lady 225**  
Daughter of Carter's Lady X128  
... full sib to Lot 27A embryos

# Buyer's Choice Embryos

This special sale attraction features embryos from a direct daughter of Gambles Lady 959, who is a proven daughter of the Pathfinder Sire and past National Western Stock Show and North American Champion bull Famous 7001, stemming from the now-deceased Champion Hill Lady 703, the cornerstone female in the Gamble program that has gone on to produce numerous champions and past top sellers. 959 is a full sister to the past Denver Champion Gambles Hot Rod and a maternal sister to Top Line Mackinaw, a leading herd sire for Top Line Farms in Illinois.

The donor dam of these embryo packages was named Reserve Champion at the 2011 Tulsa State Fair and was a Reserve Division Champion at the 2011 Eastern Regional Junior Angus Show.

A daughter of X128 by Lookout, and full sister to the Lot 27A embryos, is currently being campaigned by Braden Henricks and is undefeated in class except for Denver, where she stood second in class. HCC Lady 225 won her class at the American Royal and was Reserve Division and Reserve Champion Bred-and-Owned at the recent Oklahoma Youth Expo.

## 27A Lookout × X128 embryos

4 Frozen Embryos ♦ Progeny Pedigree

OCC Legend 616L  
+ BC Lookout 7024  
Gibbet Hill Mignonne E37

# + HSAF Bando 1961  
+ Carter's Lady X128  
+ Gambles Lady 959

♦ Braden Henricks

♦ Four buyer's choice embryos sired by BC Lookout.

# + OCC Emblazon 854E  
OCC Blackbird 632J  
# Papa Equator 2928  
Gibbet Hill Mignonne TR 29

# + SAF 598 Bando 5175  
+ JKS Miss Cheyenne 196  
# Famous 7001  
+ Champion Hill Lady 703

S:		D:	
SWEAN	SWEAN	SFEEDLOT	SFEEDLOT
+34.66	+28.80	+28.71	+29.61
SGRID	SGRID	SBFEEF	SBFEEF
+34.38	+21.13	+77.95	+67.91

	BW	WW	YW	MILK	MARB	REA
S:	+2.6	+51	+87	+20	+48	+.75
D:	1+3.8	1+49	1+87	1+25	1+.23	1+.41



**BC Lookout 7024**  
Sire of Lot 27A  
buyer's choice embryos

## 27B First-n-Goal × X128 embryos

4 Frozen Embryos ♦ Progeny Pedigree

Dameron First Class  
+ SCC First-n-Goal GAF 114  
+ SCC Royal Blackbird 2029

# + HSAF Bando 1961  
+ Carter's Lady X128  
+ Gambles Lady 959

♦ Braden Henricks

♦ Four buyer's choice embryos sired by First-n-Goal.

EXG RS First Rate S903 R3  
Dameron Northern Miss 3114  
+ Champion Hill Edition 2029  
+ Champion Hill Blackbird 1943

# + SAF 598 Bando 5175  
+ JKS Miss Cheyenne 196  
# Famous 7001  
+ Champion Hill Lady 703

S:		D:	
SWEAN	SWEAN	SFEEDLOT	SFEEDLOT
+24.14	+28.80	+28.52	+29.61
SGRID	SGRID	SBFEEF	SBFEEF
+11.46	+21.13	+37.19	+67.91

	BW	WW	YW	MILK	MARB	REA
S:	+5.2	+54	+88	+26	+.04	+.12
D:	1+3.8	1+49	1+87	1+25	1+.23	1+.41



**SCC First-n-Goal GAF 114**  
Sire of Lot 27B  
buyer's choice embryos

## 27C Brilliance × X128 embryos

4 Frozen Embryos ♦ Progeny Pedigree

+ SAV Bismarck 5682  
SAV Brilliance 8077  
SAV Blackcap May 5270

# + HSAF Bando 1961  
+ Carter's Lady X128  
+ Gambles Lady 959

♦ Braden Henricks

♦ Four buyer's choice embryos sired by Brilliance.

# + GAR Grid Maker  
SAV Abigale 0451  
# SAV 8180 Traveler 004  
# + SAV May 2420

# + SAF 598 Bando 5175  
+ JKS Miss Cheyenne 196  
# Famous 7001  
+ Champion Hill Lady 703

S:		D:	
SWEAN	SWEAN	SFEEDLOT	SFEEDLOT
+35.48	+28.80	+41.43	+29.61
SGRID	SGRID	SBFEEF	SBFEEF
+18.76	+21.13	+67.52	+67.91

	BW	WW	YW	MILK	MARB	REA
S:	-0.1	+52	+98	+26	+18	+.63
D:	1+3.8	1+49	1+87	1+25	1+.23	1+.41



**SAV Brilliance 8077**  
Sire of Lot 27C  
buyer's choice embryos



MCS

Forever Allison Missy 6807 Dam of Lot 28 embryos & Lot 44; full sister to Lots 5, 6 & 65A

**28 Net Worth × Missy 6807 embryos**

5 Frozen Embryos ♦ Progeny Pedigree

#SAV 8180 Traveler 004  
**#SAV Net Worth 4200**  
 + SAV May 2410

#DHD Traveler 6807  
**+ Forever Allison Missy 6807**  
 JK Allison's Pride EXT

#Sitz Traveler 8180  
 + Boyd Forever Lady 8003  
 # +SAF 598 Bando 5175  
 #SAV May 6269  
 #QAS Traveler 23-4  
 #Bemindful Maid DHD 0807  
 #N Bar Emulation EXT  
 Davis Edwina 842

S:		D:	
SWEAN	+33.07	SWEAN	+17.62
SPEEDLOT	+54.14	SPEEDLOT	+12.97
SGRID	+23.80	SGRID	+18.29
SBEFF	+83.49	SBEFF	+51.47

	BW	WW	YW	MILK	MARB	REA
S:	+4.6	+57	+110	+30	+.61	+.40
D:	+2.4	+33	+66	+14	1+.18	1+.24

♦ Krause H2O Fowl Angus Farm

Forever Allison Missy 6807 depicts the perfect Angus cow in Joe Krause's opinion and is what he strives for in his A.I. and flush programs. She is phenotypically correct throughout and easy fleshing with tremendous rib and volume. She complements her power with a perfect udder and teat structure and abundant milk flow. One of her greatest assets is her ability to transmit WDA to her progeny.

In addition to these embryos, Missy 6807 has two flush sisters and a flush brother that sell as Lots 5, 6 and 65A. A natural daughter by Final Answer sells with a bull calf by BC Matrix as Lot 44. Additionally, a daughter of a flush sister to Missy 6807 sells with heifer calf by SAV Solid Gold.

Buy with confidence and know that Joe will stand behind every animal he sells.

♦ Selling a package of five frozen embryos sired by Net Worth.



SAV Net Worth 4200 Sire of Lot 28 embryos & Lots 39 & 63



# Spring Cow/Calf Pairs

## ...Lots 29-62



*Dustin Layton*

Basin Lucy 8N02 Dam of Lot 29

Lot **29**

### PF 67S Lucy 1113

CALVED: 2/20/11 ♦ COW: +16912199 ♦ TATTOO: 1113

#SS Objective T510 0T26  
**+SQ Credence 67S**  
 + Rita 3540 of 021 Rito 111

#Bon View New Design 1407  
**+Basin Lucy 8N02**  
 Basin Lucy 178E

♦ Pollard Farms, LLC

1113 is a direct daughter of Basin Lucy 8N02, who was the \$440,000-valued and top selling female of the 2008 EXAR Big Event Sale at \$220,000 for half interest to MJB Ranch. Lucy 8N02 is a tremendous producing daughter of Basin Lucy 178E and New Design 1407 and is the star of the joint embryo program of Basin Angus, Express Ranches and MJB Ranch.

Make note of 1113's phenomenal EPDs!

♦ **LOT 29A:** Heifer calf born 2/24/13, tattoo 3115, by Hoover Dam.  
 BW 55 lbs.

#SS Traveler 6807 T510  
 SS Miss Rita R011 7R8  
 # + Rito 111 of 2536 Rito 616  
 Rito 021 of 7R11 RDA

#B/R New Design 036  
 Bon View Pride 664  
 #Basin Max 602C  
 #Basin Lucy 855A

SWEAN	+34.97
SPEEDLOT	+47.54
SGRID	+51.35
SBEEF	+49.57

BW	WW	YW	MILK	MARB	REA
+0.4	+60	+106	+33	+91	+48



*Chris Mitchell*

Basin Lucy 178E Maternal granddam of Lot 29



CF 1961 Peg 3011 Lot 30



PAF Evas Traveler 1090 Lot 32

**30** **CF 1961 Peg 3011**  
 CALVED: 2/16/11 ♦ COW: 16942788 ♦ TATTOO: 3011

- # + SAF 598 Bando 5175
- # + HSAF Bando 1961
- + JKS Miss Cheyenne 196
- # Bon View New Design 1407
- + PF LSA 1407 Peg 3237
- + TC Peg 7005

- # Bon View Bando 598
- + SAF Royal Lass 1002
- # N Bar Emulation EXT
- + Magic Meadow Miss Cheyenne
- # B/R New Design 036
- Bon View Pride 664
- # Sitz Traveler 9929
- # TC Peg 9100

SWEAN	+23.36
SPEEDLOT	+25.80
SGRID	+27.58
SBEEF	+65.13

♦ Clarence Frey

3011 traces back to the Pathfinder Dam TC Peg 9100, featured in the Champion Hill program.

This productive female has a pedigree packed with Pathfinders on both sides.

- ♦ **LOT 30A:** Heifer calf born 2/27/13, tattoo 313, by PF Iron Mountain 9909 1076. BW 68 lbs. EPDs: BW 1+1.8, WW 1+47, YW 1+88, Milk 1+19.

BW	WW	YW	MILK	MARB	REA
+2.2	+42	+81	+22	1+.42	1+.22

**31** **CF Erica Lady 2711**  
 CALVED: 2/16/11 ♦ COW: 17201669 ♦ TATTOO: 2711

- # + GAR Grid Maker
- + SAV Bismarck 5682
- SAV Abigale 0451

- # Mytty In Focus
- CF Erica Lady 1008**
- TC Erica Lady 6141

- #GDAR Traveler
- GAR Precision 2536
- #Schoenes Fix It 826
- SAV Abigale 6062
- #SAF Focus of ER
- Mitty Countess 906
- TC Forefront 2102
- +TC Erica Lady 1049

SWEAN	+34.71
SPEEDLOT	+32.04
SGRID	
SBEEF	

♦ Clarence Frey

Note the impressive EPD spread... BW -0.3 to YW +91. Even more impressive is the +0.4 to +106 spread of the Objective bull calf at side.

- ♦ **LOT 31A:** Bull calf born 2/8/13, tattoo 113, by SS Objective T510 0T26. BW 60 lbs. EPDs: BW 1+0.4, WW 1+62, YW 1+106, Milk 1+28.



BW	WW	YW	MILK	MARB	REA
-0.3	+54	+91	+24		

**32** **PAF Evas Traveler 1090**  
 CALVED: 1/25/11 ♦ COW: 17066139 ♦ TATTOO: 1090

- # Sitz Traveler 8180
- # SAV Final Answer 0035
- SAV Emulous 8145
- # + Boyd New Day 8005
- PAF Evas Traveler 9156**
- PAF Evas Traveler 3004

- #GDAR Traveler 71
- Sitz Everelda Entense 1137
- # Bon View Bando 598
- SAV Sky Emulous 2124
- # AAR New Trend
- SVF Forever Lady 57D
- # Bon View New Design 1407
- + GAR Evas 6807 Trav 532

SWEAN	+37.89
SPEEDLOT	+40.20
SGRID	+19.41
SBEEF	+40.79

♦ Pfeiffer Angus Farms

BW	WW	YW	MILK	MARB	REA
+0.3	+52	+97	+29	+20	+47

- ♦ **LOT 32A:** Bull calf born 1/23/13, tattoo 3097, by Sinclair Net Present Value. EPDs: BW 1-0.7, WW 1+49, YW 1+90, Milk 1+29, Marb 1+.43, REA 1+.42.

**33** **CF Net Total 5010**  
 CALVED: 10/19/10 ♦ COW: 17022821 ♦ TATTOO: 5010

- # SAV Net Worth 4200
- SAV Net Worth 8252**
- SAV Emblynette 5310

- #TC Total 410
- CF Total Threat 6407**
- CF Threat 6502

- #SAV 8180 Traveler 004
- +SAV May 2410
- # + SAF 598 Bando 5175
- SAV Emblynette 1058
- # Bon View New Design 208
- +TC Erica Eileen 2047
- TC Forefront 0148
- CF Thorr Threat 4095

SWEAN	+22.94
SPEEDLOT	+41.23
SGRID	+37.31
SBEEF	+86.05

♦ Clarence Frey

A high growth female with impressive carcass EPDs.

- ♦ **LOT 33A:** Bull calf born 2/9/13, tattoo 213, by SS Objective T510 0T26. BW 65 lbs. EPDs: BW 1+2.9, WW 1+62, YW 1+110, Milk 1+29.

BW	WW	YW	MILK	MARB	REA
+4.7	+55	+99	+27	1+.71	1+.47

**SS Objective T510 0T26**  
 Sire of Lots 31A, 33A & 35

Let **34**

**Rutledge Sylvan 09**

CALVED: 5/7/10 ♦ COW: 16897756 ♦ TATTOO: 09

#SAF Focus of ER  
#Mytty In Focus  
Mytty Countess 906

#GAR Predestined  
**Rutledge Sylvan 89 U**  
Rutledge Sylvan 99 J

♦ **Rutledge Angus**

The Sylvan cow line has been one of the most prolific in the Rutledge herd, and this young cow is sure to be no exception. One of their Sylvan heifers was Grand Champion Female at the 1999 All-American Breeders' Futurity Super Roll of Victory Show and was named Supreme Champion of the 1999 Ozark Empire Fair.

The heifer calf at side is sired by GAR Sunrise, who is in the top 10% or above for every \$Value Index published by the AAA.

♦ **LOT 34A:** Heifer calf born 3/10/13, tattoo 13, by GAR Sunrise.  
EPDs: BW -0.8, WW +54, YW +102, Milk +27.

#SAF Fame GDAR Forever Lady 246	#SWEAN +27.80
#Sitz Alliance 6595 Balbridge Countess 357	#SPEEDLOT +31.70
#B/R New Design 036 # + GAR EXT 4206	#SGRID
#Gardens Prime Time Rutledge Sylvan 79 G	#SBEEF

BW	WW	YW	MILK	MARB	REA
+1.2	+47	+88	+25		



Rutledge Sylvan 09 Lot 34

Let **35**

**KLR Blackcap 0138**

CALVED: 3/21/10 ♦ COW: +16638228 ♦ TATTOO: 0138

#SS Traveler 6807 T510  
#SS Objective T510 0T26  
SS Miss Rita R011 7R8

#Bon View New Design 1407  
+GAR 1407 New Design L1084  
+GAR 616 Rito 1901

♦ **Pollard Farms, LLC**

The dam of this balanced trait female is one of the top ranked Marbling EPD females of the Angus breed. L1084 has a progeny IMF ratio of 104 on 53 head after recording individual IMF and ribeye ratios of 103 and 106, respectively, at Gardiner Angus Ranch. This cow also has a progeny birth ratio of 93 combined with progeny weaning and yearling ratios of 102 on two natural calves. The \$70,000 dam of L1084 is a full sister to the \$75,000 Select Sires bull Rito 112 of 2536 Rito 616, the \$25,000 Rito 111 of 2536 616, the \$1 million-valued Rita 1197 of 2536 Rito 616 and the \$153,000 Rita 1198 of 2536 Rito 616. The great-granddam is the breed's world record income-producing cow, with more than \$7.5 million in progeny sales to date. A daughter of 0138 sells as Lot 22.

♦ **LOT 35A:** Heifer calf born 3/21/13, tattoo 3153, by Sitz Upward 307R.  
BW 68 lbs.

#DHD Traveler 6807 #SS Miss Hi Spade A114 SS Rito Rito R76 R011 SS Miss Ultress U56	#SWEAN +31.48
#B/R New Design 036 Bon View Pride 664 #Rito 616 of 4B20 6807 GAR Precision 2536	#SPEEDLOT +42.66
	#SGRID +50.74
	#SBEEF +63.78

BW	WW	YW	MILK	MARB	REA
-0.7	+52	+99	+31	+0.96	+0.63



GAR 1407 New Design L1084 Dam of Lot 35

Let **36**

**PF 5118 Miss Wix 0306**

CALVED: 3/5/10 ♦ COW: +16700392 ♦ TATTOO: 0306

# + Rito 112 of 2536 Rito 616  
+EXAR Rito 5118 of Rito 112  
+GAR New Design 1200

#Rockn D Ambush 1531  
+PF 1531 Miss Wix 2445  
+PF 365 Miss Wix 9202

♦ **Pollard Farms, LLC**

♦ **LOT 36A:** Heifer calf born 3/7/13, tattoo 3143, by Basin Mission Complete.  
BW 66 lbs.

#Rito 616 of 4B20 6807 GAR Precision 2536 #B/R New Design 036 GAR Precision 2536	#SWEAN +19.68
#Paramont Ambush 2172 Ms Blackcap Band of RD 1301 #TC Stockman 365 #GDAR Miss Wix 3325	#SPEEDLOT +14.96
	#SGRID +35.44
	#SBEEF +67.25

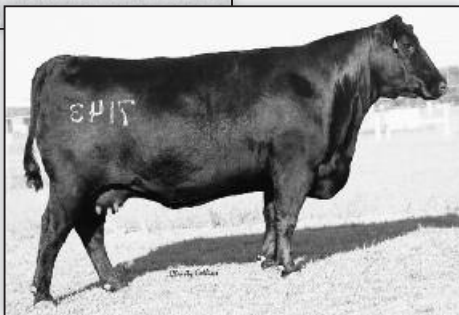
BW	WW	YW	MILK	MARB	REA
+3.4	+36	+69	+22	+0.45	+0.30



Basin Mission Complete Sire of Lots 36A & 41A



**OSU Jilt 5162**  
Dam of Lot 37



**OSU Jilt 7143**  
Maternal granddam of Lot 37



**WCC Primrose L306**  
Maternal granddam of Lot 38



**N Bar Primrose 2424**  
Great-granddam of Lot 38

## 37

### PF Jilt 0226

CALVED: 2/21/10 ♦ COW: +16644976 ♦ TATTOO: 0226

#BC Marathon 7022  
**BC 7022 Raven 7965**  
OCC Blackbird 796F

#Twin Valley Precision E161  
**+ OSU Jilt 5162**  
#OSU Jilt 7143

♦ **Pollard Farms, LLC**

0226 descends from the long line of proven, very successful OSU Jilt donor dams. This Raven daughter ranks among Angus dams in the top 2% for REA EPD.

♦ **LOT 37A:** Bull calf born 3/5/13, tattoo 3139, by Connealy Consensus 7229. BW 69 lbs.

OCC Kirby 633K  
Gibbet Hill Mignonne E37  
#OCC Bonanza 880B  
OCC Blackbird 779A  
#GAR Precision 1680  
+WCC Blackcap C9  
# + Krugerrands Moneyline  
OSU 6807 Jilt 5133

SWEAN	+15.27
SPEEDLOT	+24.58
SGRID	+37.37
SBEEF	+74.83

BW	WW	YW	MILK	MARB	REA
+2.6	+37	+78	+13	+48	+82

## 38

### PF Primrose 0198

CALVED: 2/11/10 ♦ COW: 16646547 ♦ TATTOO: 0198

# + OCC Emblazon 854E  
**+ Rito 6EM3 of 4L1 Emblazon**  
+ Rito 4L1 of 2536 208

#BR Midland  
**+ PF 11 Primrose 6136**  
+WCC Primrose L306

♦ **Pollard Farms, LLC**

0198 descends from the \$15,600 Ratcliff and Christenson 4-D selection from the 2007 Pollard

sale, Primrose L306, who is a flush sister to the now-deceased WCC Special Design L309, a maternal sister to XT, EXAR New Look 2971, EXAR Foundation 1806, WCC Precision J239 and others and a direct daughter of the now-deceased Broken Arrow, Express, Rolling R3 and Vintage Angus foundation donor N Bar Primrose 2424, who sold for \$100,000 at 17-1/2 years of age. L306 generated \$60,950 in progeny sales on seven lots sold at auction for an impressive average of \$8,707. Progeny of L306 include a Midland heifer pregnancy that sold for \$17,500 in the 2006 Pollard sale to Ratcliff; in the 2007 Denim and Diamonds Sale, a 112 heifer calf pregnancy sold for \$12,000 to Broken Arrow, a Midland heifer calf pregnancy sold for \$7,000 to Weiker Angus, and a 2V1 heifer calf pregnancy sold for \$7,500 to Boruff's Creekside. A maternal sister to the dam of 0918 sold to J&J Cattle Co. and A-Cross Ranch for \$7,250 in the 2007 Pollard sale. In the 2008 Pollard sale, maternal sisters to the dam of this lot sold for \$7,000 to A-Cross Ranch and \$2,700 to Fox Run.

♦ **LOT 38A:** Heifer calf born 3/2/13, tattoo 3128, by Basin Mission Complete. BW 58 lbs.

#DHD Traveler 6807  
Dixie Erica of CH 1019  
#Bon View New Design 208  
GAR Precision 2536  
#Twin Valley Precision E161  
BR Royal Lass 7036-19  
#Bon View New Design 878  
N Bar Primrose 2424

SWEAN	+27.85
SPEEDLOT	+29.09
SGRID	+31.51
SBEEF	+57.30

BW	WW	YW	MILK	MARB	REA
+1.0	+45	+85	+22	+56	+35

## 39

### PF Thomas Ester 0203 of RCF

CALVED: 2/12/10 ♦ COW: +16645000 [NHF] ♦ TATTOO: 0203

#SAV 8180 Traveler 004  
**#SAV Net Worth 4200**  
+SAV May 2410

#Twin Valley Precision E161  
**+ Thomas Ester 3666**  
#Thomas Ester 4123

♦ **Pollard Farms, LLC**

0203 descends from Thomas Ester 4123, a proven Pathfinder donor that has produced many great daughters and records ratios of BW 7@99, WW 7@106 and YW 4@102 along with ultrasound ratios of IMF 72@104 and REA 72@104. Twenty daughters of Ester 4123 maintain a combined WW ratio of 35@104. Daughters of Ester 4123 include: Thomas Ester 3579, sold for \$60,000 to Thomas Angus of Oregon and Boyd Beef Cattle of Kentucky; Thomas Ester 3657, sold for \$19,500 to Sunset Valley in Ohio; Thomas Ester 3682, sold to Ray-Mar Angus in California for \$16,000; Thomas Ester 9591, sold for \$15,305; Thomas Ester 3668, sold for \$65,000 to Rock River Ranch of Illinois; Thomas Ester 3671, sold to Creswell Farms of Virginia for \$40,000; and Thomas Ester 3651, sold for \$21,000 to Claylick Run of Ohio.

♦ **LOT 39A:** Heifer calf born 2/3/13, tattoo 3030, by TC Freedom 104. BW 79 lbs.

#Sitz Traveler 8180  
+Boyd Forever Lady 8003  
# +SAF 598 Bando 5175  
#SAV May 6269

#GAR Precision 1680  
+WCC Blackcap C9  
#N Bar Emulation EXT  
Thomas Ester 1204

SWEAN	+31.06
SPEEDLOT	+35.82
SGRID	+18.85
SBEEF	+69.23

BW	WW	YW	MILK	MARB	REA
+1.2	+51	+93	+30	+36	+39

## 40

### A Cross Blackcap A0083

CALVED: 2/6/10 ♦ COW: 16556291 ♦ TATTOO: A0083

# + GAR Grid Maker  
**+ SAV Bismarck 5682**  
SAV Abigale 0451

#BR Midland  
**+ J&J Blackcap 5110**  
+ J&J 1531 Blackcap 240

♦ **Pollard Farms, LLC**

A0083 descends from Leachman Blackcap 8261, the \$135,000 top selling female in the 2003 Express Ranches sale to the Howard/Kerr Partnership. Two flushes from 8261 both commanded \$43,500 in a Bases Loaded Sale.

♦ **LOT 40A:** Heifer calf born 2/12/13, tattoo 3044, by Connealy Consensus 7229. BW 66 lbs.

**Leachman Blackcap 8261**  
Great-granddam of Lot 40

#GDAR Traveler  
GAR Precision 2536  
#Schoenes Fix It 826  
SAV Abigale 6062  
#Twin Valley Precision E161  
BR Royal Lass 7036-19  
#Rockn D Ambush 1531  
+ Leachman Blackcap 8261

SWEAN	+33.14
SPEEDLOT	+37.57
SGRID	+33.40
SBEEF	+65.74

BW	WW	YW	MILK	MARB	REA
+1.4	+55	+96	+21	+38	+57



Let **41**

**PF Conansa 0118**

CALVED: 1/5/10 ♦ COW: 16646617 ♦ TATTOO: 0118

HARB Pendleton 765 JH  
**21AR Roundup 7005**  
 21AR Blackbird Lady F645

#Hyline Right Time 338  
**+BAAR USA Greenland 8008**  
 Greenland of Conanga 798

#SAV Final Answer 0035  
 #HARB Black Lady 375 JH  
 #BCC Bushwacker 41-93  
 21AR Blackbird Lady C645  
 # + Leachman Right Time  
 Hyline Pride 265  
 #Connealy Dateline  
 Gravy May of Conanga

SWEAN	+29.16
SPEEDLOT	+25.68
SGRID	+21.64
SBEEF	+72.84

BW	WW	YW	MILK	MARB	REA
+1.6	+50	+84	+15	+.42	+.69

♦ **Pollard Farms, LLC**

The dam of 0118 is a maternal sister to a popular outcross sire to Precision and New Design genetics, Connealy Overtime. One-half interest in the granddam of 0118, 798, sold in the 2008 Denim and Diamonds Sale for \$19,000. 798 has distinguished herself as one of the top producers from one of the most respected performance herds in America. Her natural son Overtime was a favorite of the 2004 Connealy sale, and his progeny followed suit by becoming the high selling two-year-old large sire group in the 2007 Connealy Bull Sale. Overtime sires an attractive, wide based phenotypic package with added muscle, enhanced curve-bender spread and carcass value.

♦ **LOT 41A:** Heifer calf born 2/15/13, tattoo 3048, by Basin Mission Complete. BW 68 lbs.



Greenland of Conanga 798 Maternal granddam of Lot 41

Let **42**

**PF Forever Lady 0114**

CALVED: 1/3/10 ♦ COW: +16646538 [CAF] ♦ TATTOO: 0114

#Boyd On Target 1083  
**#Stevenson Moneymaker R185**  
 #Stevenson Clova Pride L888

# + Rito 112 of 2536 Rito 616  
**JACS Forever Lady 6710**  
 Jac's Forever Lady 2366

# + SAF 598 Bando 5175  
 +Boyd Forever Lady 7095  
 VДАР Ambush 2478  
 Stevenson Clova Pride 712H  
 #Rito 616 of 4B20 6807  
 GAR Precision 2536  
 # + SAF 598 Bando 5175  
 + Rocky MT Forever Lady 715

SWEAN	+30.12
SPEEDLOT	+50.28
SGRID	+24.32
SBEEF	+67.57

BW	WW	YW	MILK	MARB	REA
+3.2	+57	+107	+22	+.48	+.18

♦ **Pollard Farms, LLC**

The dam of 0114, Forever Lady 6710, was a sale feature and valued at \$94,000 in the 2008 Express Ranches Big Event. A daughter of Rito 112, 6710 is stout and phenotypically flawless. She traces back to the popular Forever Lady 715 cow, a productive female in the Jac's Ranch program in Arkansas.

♦ **LOT 42A:** Bull calf born 2/5/13, tattoo 3033, by Connealy Consensus 7229. BW 75 lbs.



JACS Forever Lady 6710 Dam of Lot 42

Let **43**

**PF Everelda Entense 0106**

CALVED: 1/1/10 ♦ COW: 16644193 ♦ TATTOO: 0106

#Sitz Traveler 8180  
**#SAV Final Answer 0035**  
 SAV Emulous 8145

+ EXAR Rito 5118 of Rito 112  
**+PF 5118 Everelda Entense 7565**  
 + BT Everelda Entense 65J

#GDAR Traveler 71  
 Sitz Everelda Entense 1137  
 #Bon View Bando 598  
 SAV Sky Emulous 2124  
 # + Rito 112 of 2536 Rito 616  
 + GAR New Design 1200  
 # + Leachman Right Time  
 Sitz Everelda Entense 1905

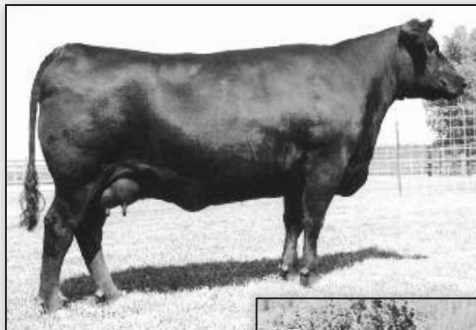
SWEAN	+34.62
SPEEDLOT	+36.82
SGRID	+29.36
SBEEF	+66.20

BW	WW	YW	MILK	MARB	REA
+0.2	+54	+95	+26	+.44	+.62

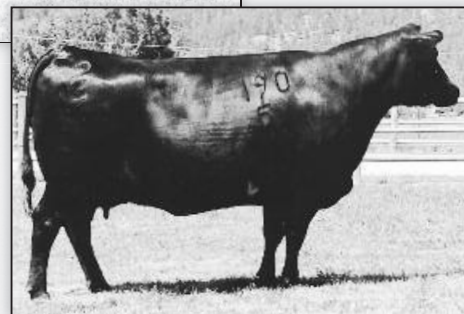
♦ **Pollard Farms, LLC**

0106 traces to BT Everelda Entense 65J, whose progeny include BT Everelda Entense 51N, the 2004 Angus Foundation Heifer, and the Accelerated Genetics sire BT Touchdown 14N. She stems from a family that has generated millions in progeny sales, backed by the legendary Sitz Everelda Entense 1905, who is considered by many to be one of the greatest females in the history of the breed. 65J is a full sister to the popular sires BT Right Time 24J and BT Direction 65D and to the \$190,000 half interest Southern Cattle Company selection from the 2001 Beartooth sale, BT Everelda Entense 57D. Other full sibs to 65J include the \$90,000 BT Everelda Entense 76D, the \$55,000 BT Everelda Entense 567H and the \$50,000-valued BT Everelda Entense 572H.

♦ **LOT 43A:** Heifer calf born 2/20/13, tattoo 3097, by Connealy Consensus 7229. BW 68 lbs.



BT Everelda Entense 65J  
 Maternal granddam of Lot 43



Sitz Everelda Entense 1905  
 Great-granddam of Lot 43



ALK Miss Cool Breeze Lot 44

Let **44**

**ALK Miss Cool Breeze**

CALVED: 12/12/09 ♦ COW: 16590610 ♦ TATTOO: 843K

#Sitz Traveler 8180  
#SAV Final Answer 0035  
SAV Emulous 8145

#DHD Traveler 6807  
+Forever Allison Missy 6807  
JK Allisons Pride EXT

#GDAR Traveler 71  
Sitz Everelda Entense 1137  
#Bon View Bando 598  
SAV Sky Emulous 2124  
#QAS Traveler 23-4  
#Bemindful Maid DHD 0807  
#N Bar Emulation EXT  
Davis Edwina 842

SWEAN	+27.49
SPEEDLOT	+27.92
SGRID	
SBEEF	

♦ Krause H20 Fowl Angus Farm

ALK Miss Cool Breeze is a natural calf sired by Final Answer and out of Forever Allison Missy 6807, who sold in the 2011 Gathering Sale for \$6,200 for half interest for a \$12,400 valuation and is the No. 1 Donor in the Krause ET program.

This female is mid-frame with loads of volume and easy fleshing with a superior udder and teat structure and abundant milk flow.

♦ **LOT 44A:** Bull calf born 3/4/13, tattoo 843, by BC Matrix 4132. BW 77 lbs.

BW	WW	YW	MILK	MARB	REA
+0.2	+45	+84	+19		



PF 64 Miss Lucy 9562 Lot 45

Let **45**

**PF 64 Miss Lucy 9562**

CALVED: 9/17/09 ♦ COW: 16615326 [CAF] ♦ TATTOO: 9562

#Connealy Whitman  
Connealy All Around  
Entrust of Conanga 894

#Twin Valley Precision E161  
+SBP Miss Lucy 5210  
M Bar M Miss Lucy 2007

♦ Pollard Farms, LLC

#Bon View New Design 208  
Ella Tina of Conanga 989  
#CRA Bextor 872 5205 608  
Endalla of Conanga 4860  
#GAR Precision 1680  
+WCC Blackcap C9  
#BCC Bushwacker 41-93  
+Davis Miss Lucy 4596

SWEAN	+25.17
SPEEDLOT	+31.05
SGRID	+41.56
SBEEF	+88.47

♦ **LOT 45A:** Bull calf born 2/11/13, tattoo 3043, by Hoover Dam. BW 75 lbs.



Hoover Dam  
Sire of Lots 29A, 45A & 55A

BW	WW	YW	MILK	MARB	REA
+3.8	+51	+89	+27	+7.0	+5.4

Let **46**

**CMC Blackcap 9529**

CALVED: 8/23/09 ♦ COW: 16657436 ♦ TATTOO: 9529

#SAV Final Answer 0035  
SAV Pioneer 7301  
SAV Blackbird 5297

#Vermilion Dateline 7078  
CMC 0394 Blackcap 5527  
Three Trees Blackcap 0394

♦ CMC Angus Cattle Co.

9529 posted impressive progeny ratios on her first natural calf of BW 101, WW 101, YW 104 and %IMF 124.

♦ **LOT 46A:** Bull calf born 3/9/13, tattoo A002, by CMC Equator 8521. BW 90 lbs. EPDs: BW +3.1, WW +50, YW +99, Milk +24, Marb +.38, REA +.48.

#Sitz Traveler 8180 SAV Emulous 8145 # + Boyd New Day 8005 SAV Blackbird 1082	#Connealy Dateline #Vermilion Blackbird 5044 #B/R New Design 036 +Leachman Blackcap 903B	SWEAN +19.73	SPEEDLOT +50.20	SGRID +29.83	SBEEF +73.08
--	---	-----------------	--------------------	-----------------	-----------------

BW	WW	YW	MILK	MARB	REA
+3.1	+52	+105	+28	+.39	+.65

Let **47**

**Grahams Composition 088**

CALVED: 8/3/09 ♦ COW: 16905403 [AMF] ♦ TATTOO: 088

#G13 Structure  
Grahams Composition 6110  
PR Jane 110

# + Rito 112 of 2536 Rito 616  
+Grahams 112 Juana 6088  
DOCC Juana 036 013

♦ Covenant Farms

#TC Stockman 365  
#G13 Traveler 9428  
# + BT Direction 65D  
Thomas Carol 7118  
#Rito 616 of 4B20 6807  
GAR Precision 2536  
#B/R New Design 036  
Thomas Juana 2002

SWEAN	+24.30
SPEEDLOT	+19.44
SGRID	
SBEEF	

BW	WW	YW	MILK	MARB	REA
+1.24	+41	+75	+21		

♦ **LOT 47A:** Heifer calf born 3/13/13, tattoo 1332, by Limestone Great Divide U254.



BAAR USA Lady Jaye 486 Clone donor for Lots 48 & 49



CRA Bextor 872  
5205 608  
Full brother to Lady  
Jaye 486 and the sire  
of Lots 13 & 50

**48** **PF Lady Jaye 9310**  
CALVED: 2/25/09 ♦ COW: ^ 16528108 [AMF] ♦ TATTOO: 9310

#N Bar Emulation EXT  
#BAR EXT Traveler 205  
#BAR Queen Traveler 3015

# +GAR Sleep Easy 1009  
CRA Lady Jaye 608 498 S Easy  
HHF 917 Lady 975 498

♦ Pollard Farms, LLC  
Cell clone of BAAR USA Lady Jaye 486.

#Emulation N Bar 5522  
N Bar Primrose 2424  
#DHD Traveler 6807  
Magic Queen 963  
#Tehama Bando 155  
Blacklass GAR 103  
HHF Traveler 688 917  
HHF Esso Lady 650 975

SWEAN	+30.20
SPEEDLOT	+10.65
SGRID	+38.20
SBEEF	+48.20

BW	WW	YW	MILK	MARB	REA
-0.5	+36	+65	+27	+64	+33

♦ **LOT 48A:** Bull calf born 3/3/13, tattoo 3130, by TC Freedom 104.  
BW 70 lbs.

**49** **PF Lady Jaye 9313**  
CALVED: 2/24/09 ♦ COW: ^ 16528114 [AMF] ♦ TATTOO: 9313

#N Bar Emulation EXT  
#BAR EXT Traveler 205  
#BAR Queen Traveler 3015

# +GAR Sleep Easy 1009  
CRA Lady Jaye 608 498 S Easy  
HHF 917 Lady 975 498

♦ Pollard Farms, LLC  
Cell clone of BAAR USA Lady Jaye 486.

#Emulation N Bar 5522  
N Bar Primrose 2424  
#DHD Traveler 6807  
Magic Queen 963  
#Tehama Bando 155  
Blacklass GAR 103  
HHF Traveler 688 917  
HHF Esso Lady 650 975

SWEAN	+30.78
SPEEDLOT	+10.65
SGRID	+37.08
SBEEF	+47.07

BW	WW	YW	MILK	MARB	REA
-0.6	+36	+65	+28	+62	+22

♦ **LOT 48A:** Bull calf born 3/5/13, tattoo 3137, by TC Freedom 104.  
BW 69 lbs.

Lots 48 and 49 are genetic clones of the former Pollard Farms donor dam Lady Jaye 486, who is a full sister to Select Sires' CRA Bextor. This former \$100,000-valued donor for Pollard and Bushy Park Farms sold to Weiker Angus for \$28,000 in the 2010 Pollard sale after she proved her worth when her first pregnancies sold at public auction in the 2008 Pollard sale totaled \$73,500 to average \$14,700, going to Limestone and Ratcliff in Oklahoma and to Boruff's Creekside in Tennessee. Another heifer pregnancy, sired by Roundup, sold to Spruce Mountain for \$11,000 in the 2009 Denim and Diamonds Sale. A natural daughter of 486 by Connealy Overtime sold for \$5,000 to SandPoint in the 2009 Pollard Sale, bringing her progeny sales since 2008 when she joined the Pollard herd to a total of \$89,500. Full sisters to 486 include Lady Jaye 4020, sold in the record-setting 2007 Express Ranches Big Event for \$73,000 to Shoulderbone Plantation; Lady Jaye 4006, sold in the 2005 Denim and Diamonds Sale for \$40,000 to Oak Hill Angus in Virginia; and Lady Jaye 489, sold to Werner Angus in the 2006 Sterling Hunter Dispersal for \$50,000. A maternal sister to 486, 5086, was the \$140,000 top selling female in the 2008 Denim and Diamonds Sale, and another was one of the top selling heifers in the 2007 SandPoint Production Sale to Whitestone Farm, Virginia, and Tanner Farms, Mississippi, for \$80,000. 486 produced Broken Arrow USA's top show heifer that sold to Heritage Cattle Company in the 2007 Denim and Diamonds Sale.

**50** **SMR Blackcap 9015**  
CALVED: 2/22/09 ♦ COW: + 16379475 ♦ TATTOO: 9015

#BAR EXT Traveler 205  
CRA Bextor 872 5205 608  
CRA Lady Jaye 608 498 S Easy

#N Bar Emulation EXT  
+VAR Blackcap 6296  
+VAR Blackcap 5042

♦ Pollard Farms, LLC

The dam of 9015, Blackcap 6296, is a proven daughter of the foundation female sire EXT and stems from a direct daughter of the \$320,000-valued New Design 1200 by the \$90,000 High Prime. Maternal sisters to the dam of 9015 include: Blackcap S701, the \$370,000 half interest and record-valued female in the breed; Blackcap P33, the \$140,000 Beatty Farms donor; Blackcap S703, the \$65,000 second high-selling fall yearling of the 2007 Riverbend Ranch Sale; and Blackcap U983, selected by Pine Tree Ranch in the 2010 Bases Loaded Sale.

♦ **LOT 50A:** Bull calf born 3/7/13, tattoo 3142, by Sitz Upward 307R.  
BW 74 lbs.

#N Bar Emulation EXT  
#BAR Queen Traveler 3015  
# +GAR Sleep Easy 1009  
HHF 917 Lady 975 498  
#Emulation N Bar 5522  
N Bar Primrose 2424  
#Summitcrest High Prime OH29  
+GAR New Design 1200

SWEAN	+25.61
SPEEDLOT	+27.92
SGRID	+42.13
SBEEF	+71.45

BW	WW	YW	MILK	MARB	REA
+2.5	+45	+84	+30	+60	+81



GAR New Design 1200 Great-granddam of Lot 50



Deer Valley Rita S6107 Clone donor for Lot 51



**GAR EXT 614**  
Great-granddam of Lot 51

# 51

## PF Rita 9315

CALVED: 1/5/09 ♦ COW: ^ 16528118 [AMF-NHF] ♦ TATTOO: 9315

#Twin Valley Precision E161  
**#BR Midland**  
BR Royal Lass 7036-19

#B/R New Design 036  
**+GAR New Design 601**  
+GAR Precision 1928

♦ **Pollard Farms, LLC**

9315 is a cell clone of the \$55,000 Deer Valley Rita S6107. She descends from the modern foundation of the "Rita" family—the \$400,000-valued one-time world record-selling female GAR EXT 614.

The dam of 9315, GAR New Design 601, has nine progeny with an average %IMF ratio of 102. 601's dam records %IMF 9@106 and REA 9@101 and is a full sister to both the \$370,000-valued GAR Precision 939 and the \$150,000-valued GAR Precision 2168.

♦ **LOT 51A:** Bull calf born 3/10/13, tattoo 3146, by TC Freedom 104.  
BW 79 lbs.

#GAR Precision 1680  
+WCC Blackcap C9  
#+SAF Neutron  
#SAF Royal Lass 7036  
#VDAR New Trend 315  
B/R Blackcap Empress 76  
#GAR Precision 1680  
+GAR EXT 614

SWEAN	+20.78
SFEEDLOT	+18.08
SGRID	+35.49
SBEEF	+58.51

BW	WW	YW	MILK	MARB	REA
+2.2	+39	+73	+14	1+.65	1+.19



**GAR New Design 930**  
Clone donor for Lots 52 & 53

# 52

## PF New Design 9301

CALVED: 11/26/08 ♦ COW: ^ 16528125 [AMF-NHF] ♦ TATTOO: 9301

#VDAR New Trend 315  
**#B/R New Design 036**  
B/R Blackcap Empress 76

#GAR Precision 1680  
**GAR Precision 2536**  
+GAR EXT 2104

♦ **Pollard Farms, LLC**

Cell clone of GAR New Design 930.

♦ **Pasture bred 7/3/12 to OSU Orion 8102.**  
Should calve before sale day.

#AAR New Trend  
#VDAR Lucy 704  
#K&K Top Gun  
+QLC A70 Blkcp Empress E43T  
#Tehama Bando 155  
9J9 GAR 856  
#N Bar Emulation EXT  
#GAR Scotch Cap 867

BW	WW	YW	MILK	MARB	REA
+2.9	+43	+81	+23	1+.64	1+.76

SWEAN	+21.88
SFEEDLOT	+25.35
SGRID	+38.20
SBEEF	+98.58

# 53

## PF New Design 9305

CALVED: 12/10/08 ♦ COW: ^ 16528092 [AMF-NHF] ♦ TATTOO: 9305

#VDAR New Trend 315  
**#B/R New Design 036**  
B/R Blackcap Empress 76

#GAR Precision 1680  
**GAR Precision 2536**  
+GAR EXT 2104

♦ **Pollard Farms, LLC**

Cell clone of GAR New Design 930.

♦ **Pasture bred 7/21/12 to OSU Orion 8102.**  
Safe in calf, due 4/30/13.

#AAR New Trend  
#VDAR Lucy 704  
#K&K Top Gun  
+QLC A70 Blkcp Empress E43T  
#Tehama Bando 155  
9J9 GAR 856  
#N Bar Emulation EXT  
#GAR Scotch Cap 867

BW	WW	YW	MILK	MARB	REA
+2.3	+44	+83	+24	+.71	+.54

SWEAN	+23.83
SFEEDLOT	+27.21
SGRID	+41.51
SBEEF	+82.17

Lots 52 and 53 are cell clones of GAR New Design 930, who was an exceptional producer for Pollard, Express and Limestone before she sold in the 2008 Express Big Event to SandPoint Angus for \$95,000. Full sisters to 930 include the \$320,000 GAR New Design 1200, dam of the Pollard and Express herd sire Rito 5118; the \$250,000 GAR New Design 80 and GAR New Design 1779, the former \$150,000 half interest top selling female at Vintage. The famous maternal granddam of these genetic duplicates to 930, 2536, has established herself as the most consistent purveyor of carcass genetics in the Angus breed. In the 2008 Pollard sale, heifer pregnancies from 930 sold for \$11,000, \$10,000 and \$8,000. A granddaughter of 930 sells as Lot 1.





CMC Anita 8702 Lot 54



EXAR Wendy 81373 Lot 56

**54** **CMC Anita 8702**  
 CALVED: 11/4/08 ♦ COW: 16323118 [AMF] ♦ TATTOO: 8702

# + OCC Emblazon 854E  
**CMC 2001 Pay Dirt 5736**  
 + OBG Miss Bando 2001

# + Rito 2V1 of 2536 1407  
**+ Limestone Anita S305**  
 + BCC WR Miss 6148 Anita 984

#DHD Traveler 6807  
 Dixie Erica of CH 1019  
 # + Northern Improvement 4480 GF  
 GAR Bando 1463

#Bon View New Design 1407  
 GAR Precision 2536  
 # Finks 5522-6148  
 RC Anita T Bando 918903

SWEAN	+24.71
SPEEDLOT	+37.69
SGRID	+28.18
SBEEF	+67.29

BW	WW	YW	MILK	MARB	REA
+1.4	+47	+93	+22	+.39	+.50

♦ CMC Angus Cattle Co.

The dam of this Emblazon granddaughter blends the Accelerated Genetics growth sire Rito 2V1 with a maternal sister to Bushwacker, sired by 5522-6148.

Maternal sisters to the dam of Anita S305 include the \$21,000 Cheyenne 41-94; Anita 41-232, the \$20,000 highlight of the 2005 Byrd Cattle Company Sale; the \$16,000 Anita 741-142; and the \$11,000 Anita 41-039.

8702 posted impressive progeny ratios on her first natural calf of BW 89, WW 106 and YW 105.

♦ **LOT 54A:** Bull calf born 3/1/13, tattoo A001, by CMC Equator 8521. BW 86 lbs.

**55** **Zebo Queen 8800**  
 CALVED: 9/20/08 ♦ COW: 16374889 ♦ TATTOO: 8800

#SS Traveler 6807 T510  
**#SS Objective T510 0T26**  
 SS Miss Rita R011 7R8

#BR Midland  
**+ Baldridge Ruth R819**  
 + RR Ruth 284G-2230

#DHD Traveler 6807  
 #SS Miss Hi Spade A114  
 SS Rito Rito R76 R011  
 SS Miss Ultress U56

#Twin Valley Precision E161  
 BR Royal Lass 7036-19  
 #Bon View New Design 1407  
 + Shady Brook Ruth 284G

SWEAN	+28.45
SPEEDLOT	+41.71
SGRID	+44.01
SBEEF	+66.80

BW	WW	YW	MILK	MARB	REA
+1.6	+54	+99	+23	+.60	+.88

♦ Pollard Farms, LLC

8800 descends from the long-time Express and Ratcliff donor Shady Brook Ruth 284G. The maternal granddam, 2230, is a full sister to a former No. 1 non-parent female for REA EPD.

♦ **LOT 55A:** Heifer calf born 3/5/13, tattoo 3138, by Hoover Dam. BW 66 lbs.

**56** **EXAR Wendy 81373**  
 CALVED: 9/3/08 ♦ COW: +16118368 [AMF-CAF-NHF] ♦ TATTOO: 81373

# + OCC Emblazon 854E  
**+ Rito 6EM3 of 4L1 Emblazon**  
 + Rita 4L1 of 2536 208

# + GDAR SVF Russ 184B  
**+ Broken Arrow Wendy 040**  
 HR Wendy 618

#DHD Traveler 6807  
 Dixie Erica of CH 1019  
 # Bon View New Design 208  
 GAR Precision 2536

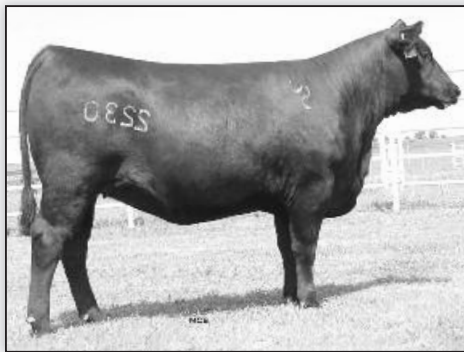
#GDAR Executive 727  
 +GDAR Forever Lady 719  
 #Bon View Bando 598  
 +HR Wendy 402

SWEAN	+26.29
SPEEDLOT	+38.98
SGRID	+17.70
SBEEF	+52.53

♦ Pollard Farms, LLC

The dam of this Rito 6EM3 daughter has been a top producer in the Express herd. Maternal sisters to 81373 include the former Silveira donor Wendy 3125, who sold over \$100,000 worth of embryo progeny in 2010 alone.

♦ **LOT 56A:** Heifer calf born 3/7/13, tattoo 3144, by Sitz Upward 307R. BW 70 lbs.



RR Ruth 284G-2230  
 Maternal granddam of Lot 55



Shady Brook Ruth 284G  
 Great-granddam of Lot 55



CMC Entense 8514 Lot 57

Lot **57**

**CMC Entense 8514**

CALVED: 9/1/08 ♦ COW: +16353277 [NHF] ♦ TATTOO: 8514

#Bon View New Design 1407  
**#EXAR 263C**  
 EXAR June C 3577  
  
 #Twin Valley Precision E161  
**+RR Ever Entense 4250**  
 +Shady Brook Ever Entense 48G

#B/R New Design 036  
 Bon View Pride 664  
 #BR Midland  
 PAF 9611 616 1161  
  
 #GAR Precision 1680  
 +WCC Blackcap C9  
 #N Bar Emulation EXT  
 Sitz Everelda Entense 1137

SWEAN	+20.79
SPEEDLOT	+46.33
SGRID	+30.48
SBEEF	+72.36

♦ CMC Angus Cattle Co.

The dam of 8514 is out of the \$40,000 Shady Brook Ever Entense 48G, who is a daughter of the \$200,000 half interest Sitz Everelda Entense 1137. 1137 has generated \$4 million in progeny sales.

BW	WW	YW	MILK	MARB	REA
+2.3	+47	+100	+26	+47	+36

♦ **LOT 57A:** Bull calf born 3/19/13, tattoo A003, by CMC Equator 8521.

BW 88 lbs.  
 EPDs: BW +2.8, WW +47, YW +97, Milk +23, Marb +.42, REA +.33.



Ali's Pride Midland M610 Lot 58

Lot **58**

**Ali's Pride Midland M610**

CALVED: 2/14/08 ♦ COW: +15997093 ♦ TATTOO: M610

#Twin Valley Precision E161  
**#BR Midland**  
 BR Royal Lass 7036-19  
  
 #RR Traveler 5204  
**KD Lucy Troy 610**  
 +KD Lucys Maxine 4102

#GAR Precision 1680  
 +WCC Blackcap C9  
 #+SAF Neutron  
 #SAF Royal Lass 7036  
  
 #QAS Traveler 23-4  
 Eriskay of Rollin Rock 3302  
 #GT Maximum  
 Biffles Lucy 898

SWEAN	+20.30
SPEEDLOT	+9.35
SGRID	+31.08
SBEEF	+54.24

♦ Krause H20 Fowl Angus Farm

M610 is an ET daughter of BR Midland and KD Lucy Troy 610, the now-deceased donor dam sired by Traveler 5204 who traces back to Biffles Lucy 898. There cannot be enough said about this young Midland daughter, and rest assured—she gives plenty of milk.

BW	WW	YW	MILK	MARB	REA
+1.3	+34	+63	+8	+68	+08

M610 sells with a phenomenal January bull calf sired by Solid Gold 9187. Fertility must be good for this young female to A.I. and settle within 30 days after calving!

♦ **A.I. 2/27/13 to SAV Solid Gold 9187. Safe in calf.**

♦ **LOT 58A:** Bull calf born 1/28/13, tattoo 610, by SAV Solid Gold 9187.  
 BW 77 lbs.



JAF Beverly 38U Lot 59

Lot **59**

**JAF Beverly 38U**

CALVED: 2/10/08 ♦ COW: 16308016 ♦ TATTOO: 38U

OCC Kirby 633K  
**#BC Marathon 7022**  
 Gibbet Hill Mignonne E37  
  
 #+EXAR New Look 2971  
**J&S Beverly 56**  
 BT Beverly 596N

#+OCC Emblazon 854E  
 +OCC Blackbird 785H  
 #Papa Equator 2928  
 Gibbet Hill Mignonne TR 29  
  
 #Bon View New Design 1407  
 N Bar Primrose 2424  
 +BT Traveler 132K  
 BT Beverly 441H

SWEAN	+25.88
SPEEDLOT	+31.32
SGRID	+23.42
SBEEF	+69.82

♦ Pollard Farms, LLC

This young cow sired by the Genex/CRI sire BC Marathon combined an individual birth weight ratio of 99 with weaning and yearling ratios of 110 and 114, respectively, along with individual IMF and ribeye ratios of 109 and 125, respectively. The dam of 38U has a progeny weaning ratio of 114 on two calves.

BW	WW	YW	MILK	MARB	REA
+3.9	+53	+90	+24	+21	+70

♦ **LOT 59A:** Heifer calf born 3/30/13, tattoo 3173, by PF R189 Bextor 9082.  
 BW 76 lbs.

Lot **60**

**Allison's 843K Miss 1407**

CALVED: 11/3/07 ♦ COW: 15997085 ♦ TATTOO: 843K

#B/R New Design 036  
**#Bon View New Design 1407**  
 Bon View Pride 664

#DHD Traveler 6807  
**+JK Allison's Miss 6807**  
 JK Allisons Pride EXT

#VDAR New Trend 315  
 B/R Blackcap Empress 76  
 # + GAR Sleep Easy 1009  
 #Bon View Pride 1551  
 #QAS Traveler 23-4  
 #Bemindful Maid DHD 0807  
 #N Bar Emulation EXT  
 Davis Edwina 842

SWEAN	+20.90
SPEEDLOT	+22.56
SGRID	+38.35
SBEEF	+66.54

♦ Krause H2O Fowl Angus Farm

843K is a young five-year-old cow that is moderate framed, easy to keep and very productive.

On the maternal side, her dam is a full ET sister to Allison's Missy 6807 that sold two years ago at the Gathering Sale for \$12,400, along with another full sister that sold for \$11,100 three years earlier. This female is phenotypically correct in all aspects with perfect udder and teat conformation and an abundance of milk.

♦ **LOT 60A:** Heifer calf born 3/26/13, tattoo 43A, by SAV Solid Gold 9187.  
 BW 74 lbs.

BW	WW	YW	MILK	MARB	REA
+2.8	+39	+77	+23	1+.62	1+.50



Allison's 843K Miss 1407 Lot 60

Lot **61**

**OSU Empress 7134**

CALVED: 2/2/07 ♦ COW: 15665172 ♦ TATTOO: 7134

#Twin Valley Precision E161  
**#BR Midland**  
 BR Royal Lass 7036-19

#N Bar Emulation EXT  
**+OSU Empress 5179**  
 + OSU Empress 6188

#GAR Precision 1680  
 +WCC Blackcap C9  
 # + SAF Neutron  
 #SAF Royal Lass 7036  
 #Emulation N Bar 5522  
 N Bar Primrose 2424  
 # + Krugerrands Moneyline  
 + DF Empress 6079

SWEAN	+26.24
SPEEDLOT	+30.52
SGRID	+22.12
SBEEF	+61.77

♦ Pollard Farms, LLC

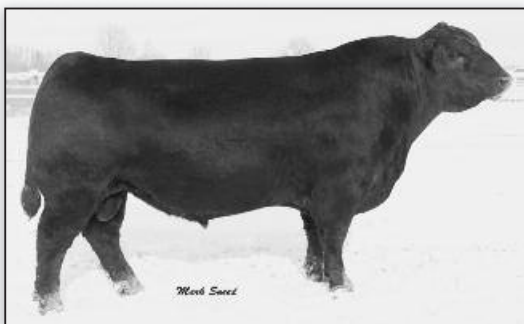
The dam of 7134, Empress 5179, was selected to join the donor herd at Pollard Farms as the \$11,000 top selling two year old from the 2007 OSU Cowboy Classic Sale. In the 1990s, the famous granddam of 5179, DF Empress 6079, gained national recognition as a result of producing several sons which would become grand champions in the show ring. This cow was the Angus Roll of Victory Embryo Transplant Dam of the Year in 1994. Her sons include OSU Precision, Grand Champion bull at the All-American Angus Futurity and Reserve Champion at the North American in 1993; OSU Ultra, Reserve Champion Angus bull at Denver in 1994 before being named Grand Champion at the National Western in 1995; and OSU Panama, Grand Champion bull at the 1996 All-American Angus Futurity and Tulsa State Fair and Grand Champion bull at the 1997 Western National Futurity in Reno, Nevada. Empress was the first female to ever produce all of the "Best Six Head" at the North American and all three bulls in the Champion "Pen of Three" at the 1994 National Western Angus show. In 1997, OSU exhibited the Champion Pen of Three Angus bulls at the National Western; the group included one direct son of 6079 and one grandson. The lead bull in the 2009 Reserve Champion Pen of Three Bulls at the National Western, OSU Currency 8173, also descends from this famous matron. To this day, many of the most productive, highest income producing females in the OSU purebred herd are 6079 daughters and granddaughters.

♦ **LOT 61A:** Heifer calf born 3/3/13, tattoo 3129, by Sitz Upward 307R.  
 BW 69 lbs.

BW	WW	YW	MILK	MARB	REA
+1.4	+47	+87	+17	+.35	+.29



OSU Empress 7134 Lot 61



Sitz Upward 307R

Sire of several of the Pollard Farms spring calves selling



OSU Empress 5179 Dam of Lot 61

# Fall Cow/Calf Pairs

## ...Lots 62-65



**B&M Jilt 803** Lot 62



**CMC Lassie 8557** Lot 63

Let **62** **B&M Jilt 803**

CALVED: 1/25/08 ♦ COW: 16038102 ♦ TATTOO: 803

# +SAF 598 Bando 5175  
# +HSAF Bando 1961  
+JKS Miss Cheyenne 196

RR Rainmaker 8153  
**B&M Jilt 138**  
+EO Jilt 2 of Rito 3W3

♦ **B&M Angus**

803 traces back to the foundation OSU Jilt 147B, who was named Grand Champion Female at the Tulsa State Fair. A maternal brother to 803 gained an impressive 6.33 pounds per day on the 2006 Oklahoma Panhandle State University Bull Test and sold for \$3,900 through the OPSU Sale.

The service to Mandate 129 should produce a top calf. 129 was among the top gainers at OBI and sold March 28 in the OBI sale. B&M is retaining two flush sisters to 129 in their herd, and several sibs have been featured in the Van Nice herd.

♦ Pasture bred 1/19/13 to B&M Mandate 129. Safe in calf.

# Bon View Bando 598  
+SAF Royal Lass 1002  
# N Bar Emulation EXT  
+ Magic Meadow Miss Cheyenne

# Basin Rainmaker 814Z  
RR Maureen 5320  
# Rito 3W3 of QJ2 Rito 9FB3  
OSU Jilt 147B

SWEAN	+24.21
SPEEDLOT	+27.74
SGRID	+15.81
SBEEF	+59.81

BW	WW	YW	MILK	MARB	REA
+4.7	+48	+85	+28	+1.4	+1.6

Let **62** **B&M Jilt 238**

CALVED: 12/5/12 ♦ COW: 17398367 ♦ TATTOO: 238

# Sitz Upward 307R  
**EXAR Upshot 0562B**  
# +EXAR Barbara T020

# +HSAF Bando 1961  
**B&M Jilt 803**  
B&M Jilt 138

♦ **B&M Angus**

BW 75 lbs.  
♦ Sells open.

# Connealy Onward  
Sitz Henrietta Pride 81M  
# ISU Imaging Q 9111  
LCC McHenry Barbar MG382

# +SAF 598 Bando 5175  
+JKS Miss Cheyenne 196  
RR Rainmaker 8153  
+EO Jilt 2 of Rito 3W3

SWEAN	+22.13
SPEEDLOT	+49.99
SGRID	+29.50
SBEEF	+86.85

BW	WW	YW	MILK	MARB	REA
+3.6	+55	+106	+32	+1.47	+1.53

Let **63** **CMC Lassie 8557**

CALVED: 9/18/08 ♦ COW: 16323194 ♦ TATTOO: 8557

# SAV 8180 Traveler 004  
# **SAV Net Worth 4200**  
+SAV May 2410

# BR Midland  
**CMC 0491 Lassie 4586**  
Three Trees Lassie 0491

♦ **CMC Angus Cattle Co.**

♦ Breeding information available sale day.

# Sitz Traveler 8180  
+Boyd Forever Lady 8003  
# +SAF 598 Bando 5175  
# SAV May 6269

# Twin Valley Precision E161  
BR Royal Lass 7036-19  
# +GDAR SVF Traveler 234D  
Three Trees Lassie 5337

SWEAN	+16.15
SPEEDLOT	+29.28
SGRID	+29.64
SBEEF	+71.26

BW	WW	YW	MILK	MARB	REA
+4.3	+42	+84	+21	+5.2	+3.8

Let **63** **CMC Lassie Y002**

CALVED: 10/15/12 ♦ COW: 17491736 ♦ TATTOO: Y002

Connealy Consensus  
**Connealy Consensus 7229**  
Blue Lilly of Conanga 16

# SAV Net Worth 4200  
**CMC Lassie 8557**  
CMC 0491 Lassie 4586

♦ **CMC Angus Cattle Co.**

BW 68 lbs.  
♦ Sells open.

# KMK Alliance 6595 187  
Blinda of Conanga 004  
# Woodhill Admiral 77K  
Blue Cash of Conanga 6020

# SAV 8180 Traveler 004  
+SAV May 2410  
# BR Midland  
Three Trees Lassie 0491

SWEAN	+24.67
SPEEDLOT	+38.78
SGRID	+36.00
SBEEF	+84.43

BW	WW	YW	MILK	MARB	REA
+3.2	+55	+97	+17	+1.71	+1.53

Lot **64**

**CMC Erica 8105**

CALVED: 1/14/08 ♦ COW: 16038119 ♦ BRAND: 8105

#Bon View New Design 1407  
#EXAR 263C  
EXAR June C 3577

CMC Git R Dun 355  
#CMC 9007 Erica 6202  
Leachman Erica 9007

♦ CMC Angus Cattle Co.

8105 traces to the dam of the \$160,000 Leachman Right Time.

♦ Breeding information available sale day.

#B/R New Design 036  
Bon View Pride 664  
#BR Midland  
PAF 9611 616 1161

#Vermilion Dateline 7078  
Three Trees Everelda 0091  
#Connealy Frontline  
+Leachman Erica 6265

SWEAN	+17.68
SPEEDLOT	+32.89
SGRID	+41.23
SBEEF	+75.77

BW	WW	YW	MILK	MARB	REA
+4.8	+47	+89	+23	+.75	+.40



CMC Erica Y001 Lot 64A

Lot **64**  
**A**

**CMC Erica Y001**

CALVED: 9/5/12 ♦ COW: 17491735 ♦ TATTOO: Y001

Connealy Consensus  
#Connealy Consensus 7229  
Blue Lilly of Conanga 16

#EXAR 263C  
#CMC Erica 8105  
CMC 9007 Erica 6202

♦ CMC Angus Cattle Co.

BW 72 lbs.

♦ Sells open.

#KMK Alliance 6595 187  
Blinda of Conanga 004  
#Woodhill Admiral 77K  
Blue Cash of Conanga 6020

#Bon View New Design 1407  
EXAR June C 3577  
CMC Git R Dun 355  
Leachman Erica 9007

SWEAN	+24.97
SPEEDLOT	+41.51
SGRID	+41.02
SBEEF	+87.36

BW	WW	YW	MILK	MARB	REA
1+3.4	1+57	1+100	1+18	1+.82	1+.54

Lot **65**

**Allison's Top Pick 4105**

CALVED: 3/5/08 ♦ COW: 15997095 ♦ TATTOO: 4105

#Sitz Traveler 8180  
#SAV 8180 Traveler 004  
+Boyd Forever Lady 8003

#N Bar Emulation EXT  
JALK EXTs Lucy 10-11  
+KD Lucys Maxine 4102

♦ Krause H20 Fowl Angus Farm

4105 is a quality young female sired by Traveler 004 with well balanced production EPDs. Her production capacity traces to her great grandmother, Biffles Lucy 898. Her 2011 bull calf, Allison's Top Pick, by Final Answer, just came off 112-day test with a WDA of 3.41 lbs. and an ADG of 4.8; he sold for \$5,500.

4105 was used last year as a recipient due to her milk production. An embryo by 6807 and out of the now-deceased JK Allison's Pride EXT was implanted and resulted in the bull calf at her side that is a full flush brother to JK84, who sells as Lot 6; AK84, who sells as Lot 5; and Forever Allison Missy 6807.

♦ A.I. 1/20/13 to SAV Solid Gold 9187. Safe in calf.

#GDAR Traveler 71  
Sitz Everelda Entense 1137  
#AAR New Trend  
SVF Forever Lady 57D

#Emulation N Bar 5522  
N Bar Primrose 2424  
#GT Maximum  
Biffles Lucy 898

SWEAN	+24.78
SPEEDLOT	+27.74
SGRID	+8.66
SBEEF	+57.12

BW	WW	YW	MILK	MARB	REA
+2.8	+48	+85	+18	1+.24	1+.07

Lot **65**  
**A**

**J84K Traveler Pontotoc**

CALVED: 11/5/12 ♦ BULL: Reg. Pending ♦ TATTOO: J84K

#QAS Traveler 23-4  
#DHD Traveler 6807  
#Bemindful Maid DHD 0807

#N Bar Emulation EXT  
JK Allisons Pride EXT  
Davis Edwina 842

♦ Krause H20 Fowl Angus Farm

Embryo bull calf.

Full brother to Lots 5 and 6 and to Forever

Allison Missy 6807, dam of the Lot 28 embryos selling and dam of Lot 44.

BW 74 lbs.

#Band 234 of Ideal 3163  
QAS Blackbird Eve 601 1  
#PBC 707 1M F0203  
Bemindful Maid of RR 1079

#Emulation N Bar 5522  
N Bar Primrose 2424  
#+R&J Maxima  
Ballantrae Edwina 17N

S:	D:
SWEAN	+22.52
SWEAN	+12.80
SPEEDLOT	+19.12
SPEEDLOT	+8.30
SGRID	+21.89
SGRID	+12.88
SBEEF	+46.16
SBEEF	+54.28

BW	WW	YW	MILK	MARB	REA
+1.2	+34	+72	+16	+.15	+.33
+3.9	+34	+62	+13	+.19	+.15

VIEW/BID LIVE ON THE INTERNET:

LIVE ON THE INTERNET. LIVE AUDIO. LIVE VIDEO. BIDDING

**LiveAuctions TV**

http://www.LiveAuctions.tv  
call Brad Fahrmeier for details:  
816.392.9241

*Thank You For Your Support!*

# Semen... Lots 66-70

## Lot 66 EXG RS First Rate S903 R3

CALVED: 1/19/06 ♦ BULL: 15484543 ♦ TATTOO: S903

# + Northern Improvement 4480 GF  
#EXAR Lufton 1831  
EXAR Saras Dream 9809

EXAR Expand 1241  
Rafter S Blackcap P909  
+ JMS Blackcap JM86

#TC Stockman 365  
Blackcap of RR 5367  
# + A&B Yukon 7150  
+ Saras Dream  
  
#Bon View New Design 1407  
+ VAR Lucy 8080  
#Leachman Explorer  
Leachman Blackcap 7057

SWEAN	+20.03
SPEEDLOT	+57.54
SGRID	+26.05
SBEFF	+87.51

BW	WW	YW	MILK	MARB	REA
+4.5	+58	+113	+25	+.49	+.33

- ♦ *Diamond Hill Cattle*
- ♦ **LOT 66A:** 3 units of semen.
- ♦ **LOT 66B:** 3 units of semen.
- ♦ **LOT 66C:** 3 units of semen.
- ♦ **LOT 66D:** 3 units of semen.
- ♦ **LOT 66E:** 3 units of semen.

## Lot 69 DHD Traveler 6807

CALVED: 2/10/86 ♦ BULL: #10858958 ♦ TATTOO: 6807

#Band 234 of Ideal 3163  
#QAS Traveler 23-4  
QAS Blackbird Eve 601 1

#PBC 707 1M F0203  
#Bemindful Maid DHD 0807  
Bemindful Maid of RR 1079

#Band 602 of Ideal 928 72  
Rito 149 of Ideal 443  
Burly Eric 991  
#VCS Blackbird 467  
  
#RR Rito 707 [AMF-CAF-XF]  
Evocate Princess T  
Algoma Ericmere FBA  
Bemindful Maid of RR 4

SWEAN	+22.52
SPEEDLOT	+19.12
SGRID	+21.89
SBEFF	+46.16

BW	WW	YW	MILK	MARB	REA
+1.2	+34	+72	+16	+.15	+.33

- ♦ *Diamond Hill Cattle*
- ♦ 5 units of semen.

## Lot 67 N Bar Emulation EXT

CALVED: 2/1/86 ♦ BULL: #10776479 ♦ TATTOO: U23

#Emulation 31  
#Emulation N Bar 5522  
Ankony 8F78 Lass 8F275

#Emulation 31  
N Bar Primrose 2424  
Primrose N Bar 9962

FCR Elation Lad 652  
Miss Emulous 243  
Ankonian Dynamo 27542  
Ankony B999 Lass 26832  
  
FCR Elation Lad 652  
Miss Emulous 243  
Lad 118K of JRS  
#N Bar Primrose 5329

SWEAN	+28.42
SPEEDLOT	+19.44
SGRID	+ 9.58
SBEFF	+55.55

BW	WW	YW	MILK	MARB	REA
+1.8	+41	+75	+18	+.19	+.12

- ♦ *Diamond Hill Cattle*
- ♦ **LOT 67A:** 3 units of semen.
- ♦ **LOT 67B:** 3 units of semen.
- ♦ **LOT 67C:** 3 units of semen.

## Lot 70 Rito 9FB3 of 5H11 Fullback

CALVED: 5/17/89 ♦ BULL: # + 11223766 ♦ TATTOO: 9FB3

#PJM Powerpoint  
#Leachman Fullback  
Rachel Bonanza 341 GDAR

#Rito 9J9 of B156 7T26  
Rito 5H11 of 1B14 Rito 9J9  
Shorita 1B14 of 9R4 SE

#Schearbrook Shoshone  
Bardoliermere ETS 71  
Green Valley Bonanza 47  
Rachel 966 GDAR  
  
Band 234 of Ideal 2118  
Rito 149 of J845 7T26  
#Schearbrook Extra  
Rita 9R4 of R111 7J8

SWEAN	+19.36
SPEEDLOT	+11.06
SGRID	-10.27
SBEFF	+31.96

BW	WW	YW	MILK	MARB	REA
+4.3	+35	+65	+22	-.42	+.56

- ♦ *Diamond Hill Cattle*
- ♦ 3 units of semen.

## Lot 68 Duff Basic Instinct 6501

CALVED: 9/8/06 ♦ BULL: +15944142 ♦ TATTOO: 6501

OCC Headliner 661H  
OCC Missing Link 830M  
+ OCC Dixie Erica 946K

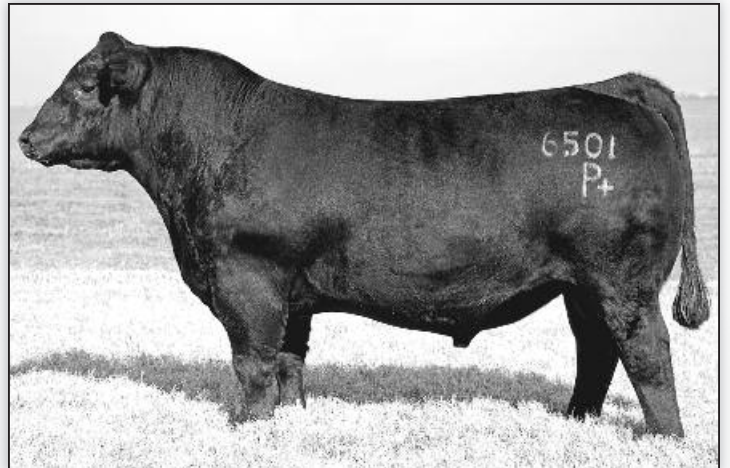
#OCC Anchor 771A  
OCC Dixie Erica 814G  
OCC Dixie Erica 764C

# + OCC Emblazon 854E  
# + OCC Juanada 858F  
#OCC Glory 950G  
+ OCC Dixie Erica 816B  
  
#DHD Traveler 6807  
OCC Juanada 709V  
#N Bar Emulation EXT  
+ OCC Dixie Erica 739A

SWEAN	+41.84
SPEEDLOT	+31.39
SGRID	+18.10
SBEFF	+50.15

BW	WW	YW	MILK	MARB	REA
+2.8	+58	+92	+25	-.03	+.97

- ♦ *Diamond Hill Cattle*
- ♦ 5 units of semen.



Duff Basic Instinct 6501 Lot 68 semen



# *The* **Gathering**

*Saturday, April 20th  
Stillwater, Oklahoma*

*Sale sponsored by the  
Oklahoma Angus Association*

## **Terms of Sale**

---

CASH. All cattle are to be paid for during or immediately after the sale and will not be released until after settlement has been made. Cattle will not be transferred until paid for in full.

## **Mail or Phone Bids**

---

If you would like to place a bid on any lot but will not be able to attend the sale, please direct your bid by mail or phone to the owners, the sale manager or any member of the sale staff. Internet bidding will be available on the LiveAuctions.tv website.

## **Health**

---

All cattle will have interstate health charts required for shipping into other sections of the United States. All bred females will have been pregnancy examined. Females of age will be calffood vaccinated.

## **Guarantee**

---

All cattle sell fully guaranteed under current Suggested Terms and Conditions of the American Angus Association.

## **Registration Certificates**

---

The cattle will be transferred to the buyer at the seller's expense. Each buyer must be sure to give the sale clerk the proper name and address for making transfers. All calves born before the sale are to be registered by the seller; proper breeding statements will be signed to allow the purchaser to register calves born after the sale.

## **Insurance**

---

Insurance for your purchases will be available sale day at the clerk's desk.

## **Announcements**

---

Announcements at the sale by the owners or the auctioneer will take precedence over statements in the sale catalog. We reserve the right to withdraw any sale lot not meeting our specifications prior to sale time.

## **Note**

---

All persons who attend the sale do so at their own risk. Neither the sale consignors, the sale manager, the Oklahoma Angus Association nor Oklahoma State University assume any liability, legal or otherwise, for accidents or loss of property.

SALE MANAGER



1019 Waterwood Pkwy, Suite D  
Edmond, OK 73034

(405) 641-6081  
mattsims@aol.com  
www.mcsauction.com

FIRST CLASS MAIL

TIME DATED MATERIAL: PLEASE DO NOT DELAY

# *The* *Gathering*

*The Oklahoma Angus Association*

*invites you to join us on a new date for the*

*14th Annual Oklahoma Angus Gathering Sale*

*Saturday, April 20th... Stillwater, Oklahoma!*

LIVE ON THE INTERNET. LIVE AHEAD. WE BIDDING.  
**LiveAuctions.TV**