

On the Hill

Denim and
DIAMONDS

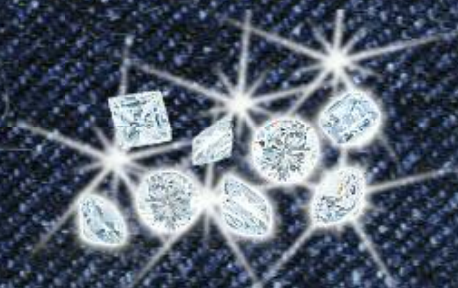
the angus sale

WEDNESDAY, JANUARY 13, 2010

4 P.M. • DENVER, COLORADO

National Western Stock Show Beef Palace Auction Arena

. . . following the National Western Angus Bull Show





On the Hill

Eighth Annual

Denim and DIAMONDS

40 Angus Lots

**Proven Donors • Show and Donor Prospects
Heifer Calf Pregnancies • Donor Flushes
Herd Sire Prospect**

4 p.m., Wednesday, January 13, 2010 • Denver, Colorado

Join us in the National Western Stock Show Beef Palace Auction Arena . . . following the National Western Angus Bull Show

New Date

New Time

New Location

- **BROKEN ARROW ANGUS RANCH**
Live Oak, California (916) 240-2505
- **COX RANCHES**
Fort Worth, Texas (817) 235-7781
- **DAMERON ANGUS FARM**
Lexington, Illinois (309) 261-2191
- **EVANS FARMS**
Stephenville, Texas (254) 967-2660
- **FAIRVIEW ANGUS RANCH**
Big Timber, Montana (406) 537-4562
- **FINLEY BROTHERS CATTLE CO., LLC**
Wyandotte, Oklahoma (918) 666-8468
- **FLESCH ANGUS**
Shelby, Montana (970) 290-4353
- **GOHR ANGUS**
Madras, Oregon (541) 325-3570
- **GREEN ANGUS RANCH**
Hardin, Montana (406) 951-2221
- **K BAR D**
Redmond, Oregon (503) 887-6861
- **LAGRAND ANGUS RANCH**
Freeman, South Dakota (605) 925-7611
- **LAZY JB ANGUS**
Montrose, Colorado (970) 240-2798
- **LIMESTONE, LLC**
Perkins, Oklahoma (918) 372-4031
- **LUDDINGTON CATTLE**
Freedom, Oklahoma (580) 327-7127
- **MALSON ANGUS**
Parma, Idaho (208) 739-1059
- **MOFFIT ANGUS FARM**
Colfax, Iowa (515) 991-3056
- **MOGCK ANGUS FARMS**
Tripp, South Dakota (605) 929-4021
- **PATTON FAMILY ANGUS, STEVE & KELLI**
Frankfort, Indiana (765) 309-3367
- **POLLARD FARMS, LLC**
Waukomis, Oklahoma (580) 758-1464
- **RIMROCK PRODUCTION, INC.**
Giddings, Texas (979) 366-9290
- **ROGEN ANGUS**
Brandon, South Dakota (605) 321-3806
- **SONRISE RANCHES, LLC**
Oologah, Oklahoma (918) 352-1088
- **SOUTHERN CATTLE COMPANY**
Marianna, Florida (850) 352-2020
- **SPRUCE MOUNTAIN RANCH, LLC**
Larkspur, Colorado (719) 484-0800
- **STYLES ANGUS, INC.**
Brentford, South Dakota (605) 887-7000
- **SUZI Q CATTLE COMPANY**
Center, Texas (936) 591-9888
- **TAYLOR CATTLE FARM**
Crestwood, Kentucky (502) 751-2114

Sale Manager



(405) 840-5461 Office
(405) 641-6081 Cell
(405) 340-0741 Fax
1019 Waterwood Pkwy, Unit D
Edmond, OK 73034
www.mcsauction.com
E-mail: matt@mcsauction.com

Sale Consultant



(254) 413-2420



<http://www.LiveAuctions.tv> • 816.392.9241

About the Sale

SALE DAY PHONES

Matt Sims, MCS Auction • (405) 641-6081
Wravenna Bloomberg, MCS Auction • (309) 883-1211

SALE STAFF

Eddie Sims, Auctioneer • (580) 595-1626
Terry Cotton, *Angus Journal* • (800) 821-5478
Vern Frey, *Angus Journal* • (701) 721-0344
Andy Rest, *Angus Journal* • (406) 254-7576
Doug Paul, *The Stock Exchange* • (405) 820-3982
Delvin Heldermon, Heldermon Enterprises • (405) 205-1116
Robbie Schacher, Schacher Auction Service • (817) 219-0102
Juston Stelzer, Stelzer Auction Services • (817) 992-7059
Wravenna Bloomberg, MCS Auction • (309) 883-1211
Parker Friedrich, Consultant • (254) 413-2420

SALE TERMS AND CONDITIONS

Cattle will sell under Suggested Terms and Conditions of the American Angus Association.

HEALTH

All live cattle will be accompanied by proper health certificates for immediate interstate shipment.

TRUCKING

Truckers believed to be reliable will be available for hire sale day.

LIVESTOCK MORTALITY INSURANCE

Representatives from American Live Stock Insurance Company and Great American Insurance Company will be available to assist you with mortality insurance for your purchases.

ANNOUNCEMENTS

Announcements made from the auction block will take precedence over statements in this catalog. We reserve the right to withdraw any sale lot not meeting our specifications prior to sale time.

EPDs

The EPDs reported in this catalog are Fall 2009 numbers as reported by the American Angus Association. Updated EPDs will be available at the sale.

NOTE

As the sale manager, MCS Auction is only an agent for the seller and has no responsibilities other than those involved in conducting the sale. Neither the owners, the sale manager nor the National Western Stock Show assume liability for accidents or loss of property.

Dear Angus Friends and Fellow Cattlemen:

Welcome to the Eighth Annual "Denim and Diamonds" Sale and our new time, date and venue. This unique event is the result of the collective efforts of forward-thinking Angus seedstock producers. Members of the "Denim and Diamonds" Group have again worked together toward the common goal of assembling an offering of elite Angus genetics that combine performance with excellent phenotype to become competitors at any level in our industry. The genetics and EPDs represented on both sides of these pedigrees are second to none as is the visual quality of the live offering.

The 2010 sale offering is the strongest to date, and quality is present throughout. As the name suggests, "Denim and Diamonds" is a unique blend of two segments of the Angus industry. The 2010 Denim and Diamonds Sale combines the influence of the breed's most valuable and proven performance families with the deepest and most elite show prospects in the country. The focus of this year's sale is on quality, not quantity, and I think you will find that like a diamond, each lot is distinctive in its own way.

I encourage each of you to evaluate your own situation and your breeding goals, and on Wednesday, January 13, please join us "on the hill" in the National Western Beef Palace Auction Arena to take advantage of the knowledge and cutting-edge efforts of these breeders and their programs. Whether you are seeking your next donor or your next champion, you will find it among this exceptional offering. If I can be of any assistance, please let me know.

Sincerely,



Matt C. Sims
MCS Auction, LLC



*Internet bidders must register with
Brad Fahrmeier by January 11, 2010.*

Real-time bidding is available via the internet for this sale. Live audio and live video will allow buyers to bid on animals just as if they were present at the sale. Buyers must create an account prior to the sale. To create an account, please visit <http://www.LiveAuctions.tv> and request a buyer number. Instructions there will walk you through the account setup process.

Web Address <http://www.LiveAuctions.tv>
E-mail address brad@LiveAuctions.tv
Brad Fahrmeier, phone (816) 392-9241

Denim and DIAMONDS

lots 1-13 ...

*"A collection of the Angus breed's top
performance and income-generating families"*

Ever Entense 491G Family



Limestone Ever Entense W753 Lot 1



Shadybrook Ever Entense 491G
\$320,000 dam of Lot 1; maternal grandam of Lot 2



Limestone Ever Entense W753

CALVED: 6/24/2009 • COW: +16467117 • TATTOO: W753

#QAS Traveler 23-4 [AMF-NHF]
#DHD Traveler 6807 [AMF-NHF]
#Bemindful Maid DHD 0807

#Band 234 of Ideal 3163
QAS Blackbird Eve 601 1
#PBC 707 1M F0203
Bemindful Maid of RR 1079

#Traveler 124 GDAR
+Shadybrook Ever Entense 491G
Sitz Everelda Entense 1137

#QAS Traveler 23-4 [AMF-NHF]
Rachel Rito 813 GDAR
#GDAR Rainmaker 340
Sitz Everelda Entense 2335

BW	WW	YW	MILK	MARB	RE	\$W	\$F	\$G	\$B
1+2.5	1+39	1+77	1+25	1+.09	1+.31	+26.04	+20.64	+16.41	+27.53

Offered by Limestone, LLC

This show and donor prospect offers the rare combination of flawless phenotype and genetic value. Her dam, Ever Entense 491G, joined the Limestone herd after serving as the cornerstone of the C&H Cattle Company program. C&H selected her as the \$320,000 one-time record-selling full interest female through the Bittersweet Station dispersal. 491G records a WR 3@103 and a YR 3@110 while showing an ultrasound REA ratio 68@103. Twenty-eight daughters of this foundation female maintain a combined WR 50@103. The dam of Ever Entense 491G was the \$210,000 half interest female and matriarch of the Shady Brook Angus program and posts a WR 7@117 and a YR 7@111 while carrying ultrasound ratios IMF 84@101 and REA 85@100. Eighty-six daughters of Sitz Everelda Entense 1137 maintain a combined WR 204@101. Maternal sisters to Lot 1 include Ever Entense 4036, the \$50,000 top-selling bred heifer of the 2005 C&H Sale to Limestone, LLC and Express Ranches who in turn produced the \$130,000 half interest crowd favorite of the 2008 Limestone sale, selected by Werner Angus; Ever Entense 4038, the \$60,000 selection of Turner Farms and Rimrock Ranches through the 2008 Limestone sale; Ever Entense 4210, the \$42,000 third high-selling donor of the Center Ranch dispersal to Thunderfoot Angus; Ever Entense S387, the \$31,000 selection of SaddleRiver Trust through the 2007 Limestone sale; Ever Entense 4047, the \$40,000 selection of Ki-amichiLink from the 2009 Limestone sale; Ever Entense 4038, the \$60,000 Turner Farms and Rimrock Productions donor; Ever Entense W636, the \$37,000 pick of JJ Angus in Pennsylvania from the 2009 Limestone sale; and a \$20,000 heifer pregnancy selected by Akers Farms through the Limestone 2008 sale. This show and donor prospect is one of the most unique females offered in recent times and is destined to make her mark on the breed!

• Sells open.



C&H Ever Entense 4038
\$60,000 maternal sister to Lot 1



C&H Ever Entense 4036
\$50,000 maternal sister to Lot 1



C&H Ever Entense 4047
\$40,000 maternal sister to Lot 1



Limestone Ever Entense T797
\$260,000 granddaughter of 491G



SMR Ever Entense 9100 Lot 2



SMR Ever Entense 9100

CALVED: 1/02/2009 • COW: 16379483 • TATTOO: 9100

#Sitz Traveler 8180 [AMF-NHF]
SAV Final Answer 0035 [AMF-NHF]
 SAV Emulous 8145

#GDAR Traveler 71 [AMF-NHF]
 Sitz Everelda Entense 1137
 #Bon View Bando 598 [AMF]
 SAV Sky Emulous 2124

#B/R New Design 323
+C&H Ever Entense 4011 [AMF]
 +Shadybrook Ever Entense 491G

#B/R New Design 036 [AMF-NHF]
 B/R Ruby of Tiffany 155
 #Traveler 124 GDAR
 Sitz Everelda Entense 1137

BW	WW	YW	MILK	MARB	RE	\$W	\$F	\$G	\$B
1+0.6	1+49	1+88	1+28	1+.31	1+.61	+30.33	+27.56	+26.44	+46.99

Offered by Spruce Mountain Ranch, LLC

The dam of this powerful daughter of SAV Final Answer 0035, Ever Entense 4011, served as the featured Everelda Entense in the Taylor Cattle program before joining the donor herd at Spruce Mountain Ranch as their selection from the 2008 Taylor sale. 4011 blends New Design 323 with the one-time world record-selling female Ever Entense 491G—the feature of the Limestone, LLC program. Ever Entense 4011 records a WR 2@111 and a YR 3@110 while carrying an ultrasound REA ratio 5@109. 491G posts a WR 3@103 and a YR 3@110 while carrying an ultrasound REA ratio 68@103. Twenty-eight daughters of Ever Entense 491G maintain a combined WR 50@103. Maternal sisters to the dam of Lot 2 include Ever Entense 4036, the \$50,000 top-selling bred heifer of the 2005 C&H sale to Limestone, LLC and Express Ranches who in turn produced the \$130,000 half interest crowd favorite of the 2008 Limestone sale when selected by Werner Angus; Ever Entense 4038, the \$60,000 selection of Turner Farms and Rimrock Ranches through the 2008 Limestone, LLC sale; Ever Entense 4210, the \$42,000 third high-selling donor of the Center Ranch dispersal to Thunderfoot Angus; and Ever Entense S387, the \$31,000 selection of Saddle-River Trust through the 2007 Limestone sale. Progeny from this highlighted donor include Ever Entense 7043, selected by Fox Run Farms through the first Taylor Cattle sale; a heifer pregnancy selling to Southern Petticoat through that same event; and Ever Entense 7100, sold to Sunset Valley Angus. 9100 combines rib, volume and power with attractive numerical balance and is destined to be a great contributor.

- Sells open.



SAV Final Answer 0035
 Sire of Lot 2 and
 Lots 25, 26 and 27



Sitz Everelda Entense 1137
 Maternal grandam or
 great-grandam of
 Lots 1 and 2



EXAR Primrose 2972 Donor dam of Lot 3 pregnancy



Heifer Calf Pregnancy

due: 1/22/2010 • Progeny Pedigree

#DHD Traveler 6807 [AMF-NHF]
#+OCC Emblazon 854E
 Dixie Erica of CH 1019

#QAS Traveler 23-4 [AMF-NHF]
 #Bemindful Maid DHD 0807
 #PBC 707 1M F0203
 Dixie Erica of CH 615

#Emulation N Bar 5522
+EXAR Primrose 2972 [AMF-NHF]
 N Bar Primrose 2424

#Emulation 31 [DWF-RDF]
 Ankony 8F78 Lass 8F275
 #Emulation 31 [DWF-RDF]
 Primrose N Bar 9962

	BW	WW	YW	MILK	MARB	RE	\$W	\$F	\$G	\$B
S:	+0.8	+49	+79	+10	+15	+29	+36.74	+18.86	+22.61	+20.34
D:	-0.7	+31	+54	+16	+13	-20	+26.51	+ 2.52	+ 6.75	+10.43

Offered by Taylor Cattle Farm

Selling this rare pregnancy mating out of the only full sister to the breed legend N Bar Emulation EXT, EXAR Primrose 2972, who sold for \$200,000 for half interest. Sibs to this mating sold in the Taylor Cattle Company sale in 2007 for a total of \$115,000. Maternal sisters include the \$40,000 selection of John Morgan out of the 2006 Bases Loaded Sale, the \$36,000 Riverbend and SandPoint purchase out of the 2008 Taylor Cattle Company sale and the \$22,000 feature in the 2008 Taylor Cattle Company sale. A clone to Primrose 2972 sold to Sonrise in the recent SandPoint sale for a \$100,000 valuation. Famous maternal brothers to Primrose 2972 include the now-deceased LaGrand and Genex/CRI sire WCC Special Design L309, EXAR New Look 2971, EXAR Foundation 1806 and WCC Precision E161 J239. The famed grandam of this heifer pregnancy, N Bar Primrose 2424, also produced the \$270,000 Deer Valley donor, Roth Primrose 1247; the \$102,000-valued VAR Primrose 9006; the \$40,000-valued Roth Primrose 1263; and the \$50,000 North Fork Primrose 6028, among others. Genetic clones of 2424 have sold in the 2009 Denim and Diamonds Sale to Luddington Angus for \$65,000, in the 2009 Bases Loaded for \$62,500 to Turner Farms, privately for \$45,000 to Pollard Farms, in the 2007 Wilson Cattle Company sale for \$45,000 to Ankony, which resulted in the \$250,000 half interest Ankony Miss Primrose 2424, selected by Mike Silver of Atlanta, and in 2008 to Ben Shaffer, Hugo, Colo., for \$51,000. This unique mating combines these legendary breed genetics with the look and power of OCC Emblazon 854E.

- Selling a guaranteed heifer calf pregnancy due 1/22/2010.



N Bar Emulation EXT
 Full brother to dam of Lot 3 pregnancy



N Bar Primrose 2424
 Maternal grandam of Lot 3 pregnancy and Lots 4 and 5



OCC Emblazon 854E
 Sire of Lot 3 pregnancy



Riverbend Primrose 437 AMF

CALVED: 10/12/2004 • COW: +14900840 • TATTOO: 437

#QAS Traveler 23-4 [AMF-NHF]
#DHD Traveler 6807 [AMF-NHF]
#Bemindful Maid DHD 0807

#Band 234 of Ideal 3163
QAS Blackbird Eve 601 1
#PBC 707 1M F0203
Bemindful Maid of RR 1079

#+Leachman Right Time
+Double W Miss Primrose E64
N Bar Primrose 2424

#N Bar Emulation EXT [AMF-NHF]
Leachman Erica 0025
#Emulation 31 [DWF-RDF]
Primrose N Bar 9962

BW	WW	YW	MILK	MARB	RE	\$W	\$F	\$G	\$B
+1.0	+34	+70	+19	+21	+05	+23.80	+15.87	+19.65	+28.86

Offered by Luddington Cattle and Evans Farms

Selling full interest in this proven donor, Riverbend Primrose 437, who was the \$50,000 high selling selection of Luddington Cattle and Evans Farms in a past Day Cattle Company sale. A flush brother to Primrose 437, Riverbend Classic, is a member of the herd bull battery for Conley Angus in Missouri. Other brothers are working at Hinkson Angus, Cottonwood Falls, Kan., and Ratcliff Ranch, Vinita, Okla. 437 is out of the \$100,000 Ratcliff Ranch donor Double W Miss Primrose E64, who is sired by the immortal Pathfinder Leachman Right Time and out of the dam who produced the Angus breed's No. 1 sire for registrations in 1996 through 2000, N Bar Emulation EXT. E64 is a maternal sister to such breed greats as EXT, New Look, Foundation and many sale features across the country. E64 boasts progeny ratios of 5@98 BW, 5@104 WW, 4@100 YW, 11@107 Marb and 11@102 RE.

• **LOT 4A:** Heifer calf born 12/09/2009 by OCC Missing Link 830M. BW 80 pounds.



Riverbend Primrose 437 Lot 4



Double W Miss Primrose E64
\$100,000 dam of Lot 4



SMR Primrose 8046
Lot 5



Double W Miss Primrose E60
Dam of Lot 5



SMR Primrose 8046

CALVED: 2/16/2008 • COW: +16158265 • TATTOO: 8046

#B/R New Design 036 [AMF-NHF]
#Bon View New Design 878 [AMF-NHF]
Bon View Gammer 85

#VDAR New Trend 315 [AMF-NHF]
B/R Blackcap Empress 76
#Bon View Bando 598 [AMF]
Bon View Gammer 233

#+Leachman Right Time
+Double W Miss Primrose E60 [NHF]
N Bar Primrose 2424

#N Bar Emulation EXT [AMF-NHF]
Leachman Erica 0025
#Emulation 31 [DWF-RDF]
Primrose N Bar 9962

BW	WW	YW	MILK	MARB	RE	\$W	\$F	\$G	\$B
+0.4	+42	+75	+25	+34	+15	+28.67	+17.65	+20.96	+37.14

Offered by Spruce Mountain Ranch, LLC

This royally-bred Primrose female is a granddaughter of the legendary N Bar Primrose 2424, who sold for \$100,000 at 17-1/2 years of age to set a new standard for aged donors in the Angus breed. Daughters of 2424 include EXAR Primrose 2972, who sold for \$200,000 for half interest and is the dam of Lot 3; the \$102,000-valued VAR Primrose 9006; the \$270,000 Roth Primrose 1247; the \$40,000-valued Roth Primrose 1263 and the \$50,000 North Fork Primrose 6028, among others. Genetic clones to 2424 have sold in the 2009 Denim and Diamonds Sale to Luddington Angus for \$65,000, in the 2009 Bases Loaded Sale for \$62,500 to Turner Farms, privately for \$45,000 to Pollard Farms, in the 2007 Wilson Cattle Co. sale for \$45,000 to Ankony, which resulted in the \$250,000 half interest Ankony Miss Primrose 2424, selected by Mike Silver of Atlanta, and in 2008 to Ben Shaffer, Hugo, Colo., for \$51,000. The \$100,000 donor dam of this heifer is a maternal sister to the established Pathfinder Sire N Bar Emulation EXT and records progeny IMF and ribeye ratios of 103 on 30 head. 8046 stacks the proven genetics of multiple generations of Pathfinder Sires from one of the most influential cow families in the history of the breed. This powerfully constructed female is attractive through her front yet high volumed and stout made. In addition to her visual appeal, she offers a solid set of EPD traits.

• Sells safe in calf to the featured ABS sire BAAR USA SMR Tumbleweed. Due 3/28/2010.

Lucy Family



Heifer Calf Pregnancy

due: 3/27/2010 • Progeny Pedigree

#SS Objective T510 OT26 [AMF-NHF] #SS Traveler 6807 T510 [AMF]
+SQ Credence 67S [AMF-NHF] SS Miss Rita R011 7R8 [AMF-NHF]
 +Rita 3540 of 021 Rito 111 [AMF] +Rito 111 of 2536 Rito 616 [AMF-NHF]
 Rito 021 of 7R11 RDA [AMF]
 #Bon View New Design 1407 [AMF-NHF] #B/R New Design 036 [AMF-NHF]
+Basin Lucy 3823 Bon View Pride 664
 Basin Lucy 178E #Basin Max 602C [AMF-NHF]
 #Basin Lucy 855A

	BW	WW	YW	MILK	MARB	RE	\$W	\$F	\$G	\$B
S:	+1.4	+72	+119	+27	+0.80	+0.48	+36.52	+50.43	+42.83	+72.21
D:	+2.1	+49	+104	+29	+0.45	+0.20	+23.78	+43.91	+23.53	+50.30

Basin Lucy 3823
 Dam of Lot 6 pregnancy



Basin Lucy 178E
 \$410,000-valued maternal grandam of Lot 6 pregnancy



SQ Credence 67S
 Sire of Lots 6 and 8 pregnancies and Lots 7A-7B

Offered by Cox Ranches

Selling a heifer calf pregnancy sired by the exciting Credence and from the \$35,000 co-second high-selling bred cow of the 2008 Basin sale, Basin Lucy 3823. The resulting female will be a full sister in blood to one of the most exciting young bulls ever produced at Basin Angus Ranch, who sold in the 2009 Basin sale as Lot 1X for \$42,000 for half interest and full possession to Sioux Pass and Gary Wall. A full sib in blood heifer pregnancy sold for \$20,000 to Springfield in that same sale. The Credence calves are very correct and complete, combining moderate birth weights with tremendous depth and spring of rib. As of November 2009, 12 herds have recorded 100 Credence progeny with an average birth ratio of 97 and an average weaning ratio of 101.

The cornerstone dam of 3823 posts a NR 7@109 and a YR 7@109 while showing ultrasound ratios IMF 90@104 and REA 89@103. Forty-two daughters of Lucy 178E maintain a combined NR 101@105. Full sisters to this sensational female include Lucy 3059, the \$440,000-valued half interest selection of SandPoint Cattle Company, Herbster Angus and Legacy Angus through the 2008 Three Trees Ranch sale; Lucy 8N02, the \$400,000-valued half interest selection as the top-valued female of the 2008 Express Ranches sale and featured in the Basin, MJB Ranch and Express Ranches programs; Lucy 3807, the \$220,000 top-valued half interest selection of Stallion Land and Cattle through the recent Turner Farms sale; Lucy 6433, the \$130,000 top-selling full interest female of the 2008 Express Ranches sale to BoBo Angus; Lucy 3972, who along with 3823 was the co-second high-selling bred cow of the 2008 Basin Sale to Cox Ranches; Lucy N947, the \$320,000-valued Vintage Angus Ranch and Clifton Farm donor; Lucy 8593, the selection of Deer Valley Farms through the 2009 SandPoint Sale; Lucy 3859, the \$100,000 selection of Double Creek Farm and Twin Lakes Ranch through the 2008 Three Trees sale; and Lucy 8364, the \$55,000 half interest selection of Rock River from the 2009 Basin Female sale. Maternal sisters to this foundation donor include the \$380,000-valued Lucy 3829; Lucy N728, the \$220,000-valued Basin and Downey Ranch donor; Lucy 5278, the Rehbein and Trowbridge donor; and Lucy 804N, the \$362,000-valued feature of the Basin, Express Ranches and Southern Cattle Company programs.

- Selling a guaranteed heifer calf pregnancy due 3/27/2010. Recipient Dam 149-9.



Basin Lucy 3807
 \$220,000-valued full sister to dam of Lot 6 pregnancy



Basin Lucy 8N02
 \$400,000-valued full sister to dam of Lot 6 pregnancy



Basin Lucy 6433
 \$130,000-valued full sister to dam of Lot 6 pregnancy



Basin Lucy 804N
 \$362,000-valued maternal sister to dam of Lot 6 pregnancy



GAR 1407 New Design 1942 Donor dam of Lots 7A-7B



GAR EXT 614
\$400,000 great-grandam of Lots 7A-7B



Southern Rita 96125

CALVED: 11/13/2009 • COW: Reg. Pending • TATTOO: 96125



Southern Rita 96128

CALVED: 11/13/2009 • COW: Reg. Pending • TATTOO: 96128

#SS Objective T510 OT26 [AMF-NHF]
+SQ Credence 675 [AMF-NHF]
+Rita 3540 of 021 Rita 111 [AMF]

#SS Traveler 6807 T510 [AMF]
SS Miss Rita R011 7R8 [AMF-NHF]
+Rito 111 of 2536 Rito 616 [AMF-NHF]
Rita 021 of 7R11 RDA [AMF]

#Bon View New Design 1407 [AMF-NHF]
GAR 1407 New Design 1942 [NHF]
+GAR Precision 810 [NHC-AMF]

#B/R New Design 036 [AMF-NHF]
Bon View Pride 664
#GAR Precision 1680 [AMC-NHC]
+GAR EXT 614 [AMF]

BW	WW	YW	MILK	MARB	RE	\$W	\$F	\$G	\$B
S: +1.4	+72	+119	+27	+80	+48	+36.52	+50.43	+42.83	+72.21
D: +2.2	+44	+81	+40	+81	+47	+22.16	+22.62	+40.76	+65.33

Offered by Southern Cattle Company

Offering choice of two direct daughters of this \$660,000-valued donor. 1942 was recognized as the most proven Angus dam ever offered for sale at Three Trees Ranch. The first two natural progeny of this fantastic female balanced an average birth ratio of 96, an average weaning ratio of 106 and an average yearling ratio of 106. 1942 herself had an individual IMF ratio of 113 and has 43 progeny scanned with an average IMF ratio of 108 and an average URE ratio of 104. A flush sister to this female sold half interest for \$190,000 to set a Missouri Angus record in the 2007 sale at Fox Run, with a full sister to her selling for \$200,000 as the top selling cow of the 2007 sale at Gardiner Angus Ranch, where the first 12 daughters of this dynamic female sold for \$261,500 as spring yearling females for an impressive average of \$21,792. The dam of this dynamic female sold half interest for \$135,000 as the top-valued female of the Sterling Hunter dispersal, and her long list of high-valued progeny include a maternal sister to this proven female who sold half interest for \$144,000 as a spring heifer calf, continuing the tradition of the \$400,000 grandam of 1942, GAR EXT 614, who produced the \$610,000 record-selling spring yearling that rewrote Angus breed history in the 2007 sale at Deer Valley Farm in Tennessee.

- Selling buyer's choice.



GAR 1407 New Design 2413
\$200,000 full sister to dam of Lots 7A-7B



GAR 1407 New Design 1192
\$190,000 half interest full sister to dam of Lots 7A-7B



GAR Remedy
Maternal brother to Lots 7A-7B



GAR Objective L196
\$60,000 maternal sister to Lots 7A-7B

Lady Jaye Family

Bextor's full sister!



BAAR USA Lady Jaye 4007 Donor dam of Lot 8 pregnancy

8 Heifer Calf Pregnancy

due: 2/01/2010 • Progeny Pedigree

#SS Objective T510 0T26 [AMF-NHF] #SS Traveler 6807 T510 [AMF]
 +SQ Credence 67S [AMF-NHF] SS Miss Rita R011 7R8 [AMF-NHF]
 +Rita 3540 of 021 Rito 111 [AMF] +Rito 111 of 2536 Rito 616 [AMF-NHF]
 Rita 021 of 7R11 RDA [AMF]
 #BAR EXT Traveler 205 [AMF-NHF] #N Bar Emulation EXT [AMF-NHF]
 +BAAR USA Lady Jaye 4007 #BAR Queen Traveler 3015
 CRA Lady Jaye 608 498 S Easy #+GAR Sleep Easy 1009 [AMF-NHF]
 HHF 917 Lady 975 498

	BW	WW	YW	MILK	MARB	RE	\$W	\$F	\$G	\$B
S:	+1.4	+72	+119	+27	+80	+48	+36.52	+50.43	+42.83	+72.21
D:	-0.9	+40	+73	+34	+62	+48	+31.54	+16.50	+34.00	+52.36

Offered by Suzi Q Cattle Company

This unique mating features the genetic enhancing strength of SQ Credence with one of the rising premier cow families in the breed. The Lady Jaye family is rapidly becoming popular as genetic contributors, and this full sister to Select Sires' CRA Bextor is sure to continue that trend. Like her sisters, 4007 offers an ideal combination of numerical balance and phenotype. Full sisters include Lady Jaye 486, the \$80,000 second top selling selection of Pollard Farms in the 2008 Denim and Diamonds Sale. 486 is a testament to the earning potential of this prolific cow line, with half interest selling in October 2008 for \$50,000 to Bushy Park Farm while her heifer pregnancies totaled \$73,500 to average \$14,700 to the following leading Angus programs: Limestone, LLC, Ratcliff Ranch and Boruff's Creekside in that same sale for a total return of \$123,500. Another full sister, 494, was the \$38,000-valued donor who sold in the 2009 Denim and Diamonds Sale. Their famous brother, Bextor, combines moderate birth with excellent growth and carcass merit. He provides advantages for \$Values and sires cattle with balance, thickness and base width. Other full sisters to the dam of this pregnancy include Lady Jaye 4020, who sold in the record-setting 2007 Express Ranches Big Event for \$73,000 to Shoulderbone Plantation; Lady Jaye 4006, who sold in the 2005 Denim and Diamonds for \$40,000 to Oak Hill Angus in Virginia; and Lady Jaye 489, who sold to Werner Angus in the 2006 Sterling Hunter Dispersal for \$50,000. A maternal sister, 5086, was the \$140,000 top selling female in the 2008 Denim and Diamonds Sale, and another was one of the top selling heifers in the 2007 SandPoint Production Sale to Whitestone Farm, Aldie, Va., and Tanner Farms, Ellisville, Miss., for \$80,000. This featured pregnancy is sure to enhance genetic value and offers endless profit potential.

- Selling a guaranteed heifer calf pregnancy due 2/01/2010.



CRA Bextor 872 5205 608
Full brother to dam of Lot 8 pregnancy



BAAR USA Lady Jaye 486
\$100,000 full sister to dam of Lot 8 pregnancy



BAAR Lady Jaye 4020
\$73,000 full sister to dam of Lot 8 pregnancy



BAAR USA Lady Jaye 5086
\$140,000 maternal sister to dam of Lot 8 pregnancy



SMR Lady Jaye 9048 Lot 9



SMR Lady Jaye 9048

CALVED: 3/25/2009 • COW: +16405463 • TATTOO: 9048

#B/R New Design 036 [AMF-NHF]
#GAR Predestined [AMF-NHF]
 #+GAR EXT 4206

#VDAR New Trend 315 [AMF-NHF]
 B/R Blackcap Empress 76
 #N Bar Emulation EXT [AMF-NHF]
 +GAR 6807 Traveler 1432

#BAR EXT Traveler 205 [AMF-NHF]
+BAAR USA Lady Jaye 4005
 CRA Lady Jaye 608 498 S Easy

#N Bar Emulation EXT [AMF-NHF]
 #BAR Queen Traveler 3015
 #+GAR Sleep Easy 1009 [AMF-NHF]
 HHF 917 Lady 975 498

BW	WW	YW	MILK	MARB	RE	\$W	\$F	\$G	\$B
+1.6	+45	+86	+29	+76	+37	+26.73	+27.12	+34.42	+55.77

Offered by Spruce Mountain Ranch, LLC

This Predestined daughter combines both visual and genetic strength, making her an outstanding donor prospect. Descending from the profit-generating line of the Lady Jaye family, 9048 ranks in the top 3% of the Angus breed's non-parent females for Marb, top 4% for Milk, top 10% for \$G and \$B and top 15% for RE. The dam of 9048 is a full sister to several famous Lady Jaye females, including Lady Jaye 486, who was the \$80,000 second top selling selection of Pollard Farms in the 2008 Denim and Diamonds Sale. 486 is a testament to the earning potential of this prolific cow line, with half interest selling in October 2008 for \$50,000 to Bushy Park Farm while her heifer pregnancies totaled \$73,500 to average \$14,700 to Limestone, LLC and Ratcliff Ranch in Oklahoma and Boruff's Creekside in Tennessee in that same sale for a total return of \$123,500. Other sisters to 4005 include Lady Jaye 4020, who sold in the record-setting 2007 Express Ranches Big Event for \$73,000 to Shoulderbone Plantation; Lady Jaye 4006, who sold in the 2005 Denim and Diamonds for \$40,000 to Oak Hill Angus in Virginia; and Lady Jaye 489, who sold to Werner Angus in the 2006 Sterling Hunter dispersal for \$50,000. A maternal sister to 4005, 5086, was the \$140,000 top selling female in the 2008 Denim and Diamonds Sale, and another was one of the top selling heifers in the 2007 SandPoint Production Sale to White-stone Farm in Virginia and Tanner Farms in Mississippi for \$80,000.

- Sells open.



GAR Predestined
 Sire of Lot 9



BAAR USA Lady Jaye 4006
 \$40,000 full sister to dam of Lot 9

Lady Family



Three Trees First Lady 6108

Donor dam of Lot 10 pregnancy; full sister to dam of Lot 10A embryos



Sitz Upward 307R

Sire of Lots 10 and 11 pregnancies



Ideal 4465 of 6807 4286

Maternal grandam of Lot 10 pregnancy and Lot 10A embryos



FV P512 of Ideal 4465

Dam of Lot 10A embryos

10 Heifer Calf Pregnancy

due: 3/05/2010 • Progeny Pedigree

Connealy Onward [AMF-NHF]
Sitz Upward 307R [AMF-NHF]
 Sitz Henrietta Pride 81M

#Connealy Lead On [AMF-NHF]
 Altune of Conanga 6104
 #Sitz Value 7097 [AMF-NHF]
 Sitz Henrietta Pride 1370

#Bon View New Design 1407 [AMF-NHF]
+Three Trees First Lady 6108
 +Ideal 4465 of 6807 4286 [AMF-NHF]

#B/R New Design 036 [AMF-NHF]
 Bon View Pride 664
 #DHD Traveler 6807 [AMF-NHF]
 EE 4286 of Ideal 2240 1254

BW	WW	YW	MILK	MARB	RE	\$W	\$F	\$G	\$B
S: +2.1	+68	+131	+27	+29	+49	+26.97	+65.53	+22.27	+63.78
D: +1.8	+52	+98	+31	+55	+26	+29.04	+36.45	+30.41	+55.26

Offered by **Sonrise Ranches, LLC**

Here is an impressive mating backed by generations of performance and profit-generating success. The donor dam of this pregnancy was the \$100,000 selection of Sonrise Ranches out of the 2008 Three Trees sale and was then featured in their 2009 sale, where Vintage Angus selected half interest. A maternal sister was the \$110,000 top-selling full interest female of the Sterling Hunter dispersal, and four daughters sold for \$92,000 in the 2007 sale at Whitestone Farm, where half interest in a maternal sister to this powerful young cow sold for \$95,000. Other maternal sisters to this unique and valuable female include the top-valued bred heifer of the 2007 sale at 7L Farms in Mississippi, who sold half interest for \$130,000 to Limestone, LLC with her first two progeny selling for \$81,000 in that same sale. Another maternal sister to this powerful and valuable donor sold half interest for \$75,000 as a heifer calf at SandPoint in Nebraska. The dam of 6108 is the recognized cornerstone of feed efficiency genetics in the Angus breed and produced a flush sister to the dam of this pregnancy who sold half interest for \$75,000 to Shiloh as the top-valued two-year-old of the 2007 sale at Three Trees.

6108 ranks in the top 2% among current Angus dams for both Yearling Weight EPD and Milk EPD and in the top 4% for Weaning Weight EPD with a Marbling EPD in the top 10%, earning individual weaning and yearling ratios of 124 and 125, respectively, combined with an individual ribeye ratio of 110. Her first calf posted a weaning ratio of 104 combined with progeny IMF and ribeye ratios of 123 and 101.

- Selling a guaranteed heifer calf pregnancy due 3/05/2010. Recipient Dam R-218.

10a P512 embryos

Progeny Pedigree

#N Bar Emulation EXT [AMF-NHF]
#Leachman Right Time
 Leachman Erica 0025

#Emulation N Bar 5522
 N Bar Primrose 2424
 #Tehama Bando 155 [AMF-NHF]
 Leachman Erica 8058

#Bon View New Design 1407 [AMF-NHF]
+FV P512 of Ideal 4465
 +Ideal 4465 of 6807 4286 [AMF-NHF]

#B/R New Design 036 [AMF-NHF]
 Bon View Pride 664
 #DHD Traveler 6807 [AMF-NHF]
 EE 4286 of Ideal 2240 1254

BW	WW	YW	MILK	MARB	RE	\$W	\$F	\$G	\$B
S: +2.3	+44	+82	+19	-.07	-.07	+25.63	+23.59	-0.08	+19.71
D: +0.4	+47	+90	+34	+53	+19	+29.67	+30.32	+30.67	+51.02

Offered by **Fairview Angus Ranch**

The dam of these embryos by Leachman Right Time is a full sister to the dam of the Lot 10 pregnancy, referenced above. P512 offers the same profit-generating potential, recording impressive progeny ratios of WW 1@108, YW 1@110 and RE 3@104.

- Selling five frozen No. 1 embryos. Removal date 11/24/2009.

Blackcap Family



Heifer Calf Pregnancy

due: 9/01/2010 • Progeny Pedigree

Connealy Onward [AMF-NHF] #Connealy Lead On [AMF-NHF]
 Sitz Upward 307R [AMF-NHF] Altune of Conanga 6104
 Sitz Henrietta Pride 81M Sitz Value 7097 [AMF-NHF]
 Sitz Henrietta Pride 1370
 #GAR Predestined [AMF-NHF] #B/R New Design 036 [AMF-NHF]
 +EXAR Rita 71599 [NHF] #+GAR EXT 4206
 +Rita 1197 of 2536 Rito 616 [AMF-NHF] #Rito 616 of 4B20 6807 [AMF-NHF]
 GAR Precision 2536 [AMC-NHF]

BW	WW	YW	MILK	MARB	RE	\$W	\$F	\$G	\$B
S: +2.1	+68	+131	+27	+.29	+.49	+26.97	+65.53	+22.27	+63.78
D: +2.9	+53	+97	+27	+1.70	+1.31	+30.16	+35.03	+34.29	+59.02

Offered by Pollard Farms, LLC

71599 is a \$100,000 own daughter of the \$800,000-valued world record selling Rita 1197, who has generated more than \$1,000,000 in progeny sales at public auction, further continuing the tradition of her dam, the all-time top income-producing female in the history of the Angus breed whose progeny now exceed \$8 million. Full sisters to 71599 include the \$225,000 Lot 1 feature of the 2008 Express Ranches sale to Platinum Cattle Company and Rita 5M25 of 1197 Pred, the \$100,000-valued donor for VanMeter Angus and Grace Meadow. Maternal sisters include the \$410,000-valued top selling female of the 2007 Limestone sale and the \$110,000 Monarch and Shoulderbone selection from the 2007 Riverbend Ranch sale. Full sisters to 1197 include Rito 112 of 2536 Rito 616, who sold half interest for \$75,000 to top his calf crop at Wehrmann Angus, and the \$153,000 Riverbend and Deer Valley foundation donor Rita 1198, who produced two daughters who sold for \$205,000 as the top-selling fall yearling and \$100,000 as the top-selling bred heifer of the 2006 Wehrmann Angus sale. Other full sisters to 1197 include the \$130,000 Deer Valley donor and Rita 1194, who served for many years as a foundation female at Southern Cattle Company. A full sib pregnancy to 71599 sold in the 2008 Turner Farms sale for \$37,000 to Daltons on the Sycamore, while a full sister was the \$26,000 featured Lot 1A in the 2009 Turner sale to 44 Farms. The combined genetics of 71599 with Sitz Upward 307R creates a mating full of performance and profit-generating potential.

- Selling a guaranteed heifer calf pregnancy due 9/01/2010.



GAR Scotch Cap 867
 Her descendants sell as
 Lots 11, 12 and 13



EXAR Rita 71599 \$100,000-valued donor dam of Lot 11 pregnancy



Rita 1197 of 2536 Rito 616
 \$800,000-valued maternal grandam of Lot 11 pregnancy



GAR Precision 2536
 Great-grandam of Lots 11 and 13 pregnancies; full sister to dam of Lot 12



EXAR Rita 71600
 \$225,000 full sister to dam of Lot 11 pregnancy



Rita 5M25 of 1197 Pred
 \$100,000 full sister to dam of Lot 11 pregnancy

more Blackcap Family



LaGrand Ms Precision 9360
Lot 12



GAR EXT 2104
Maternal grandam of Lot 12



Riverbend Blackcap S705
Donor dam of Lot 13 pregnancy



GAR New Design 1200
Maternal grandam of Lot 13 pregnancy



LaGrand Ms Precision 9360 NHF

CALVED: 2/15/2009 • COW: +16423069 • TATTOO: 9360

BC Marathon 7022 [AMF-NHF]
BC 7022 Raven 7965 [AMF-NHF]
OCC Blackbird 796F

OCC Kirby 633K
Gibbet Hill Mignonne E37
#OCC Bonanza 880B
OCC Blackbird 779A

#GAR Precision 1680 [AMC-NHC]
+LCR Precision 202 [NHC-AMF]
+GAR EXT 2104

#Tehama Bando 155 [AMF-NHF]
9J9 GAR 856 [NHF]
#N Bar Emulation EXT [AMF-NHF]
#GAR Scotch Cap 867

BW	WW	YW	MILK	MARB	RE	\$W	\$F	\$G	\$B
+3.2	+44	+77	+20	+20	+30	+24.24	+18.80	+17.80	+40.39

Offered by LaGrand Angus Ranch

The dam of 9360 has been a featured donor in the LaGrand program and is a full sister to GAR Precision 2536, the top income-producing cow in the history of the Angus breed with more than \$8 million in progeny sales to date. Other full sisters to 9360's dam include the \$150,000-valued GAR Precision 4519; the \$70,000 GAR Precision 706; the \$110,000 Precision 1680 2104 P200; the \$105,000 LaGrand Blackcap 4594, top selling bred heifer in the 2006 Denim and Diamonds Sale; and the \$30,000 Precision 1680 2104 P199. 9360 combines generations of proven genetics with the look and function to be a successful show and donor prospect.

- Sells open.



Heifer Calf Pregnancy

DUE: 1/27/2010 • Progeny Pedigree

CF Right Design 1802 [AMF-NHF]
Summitcrest Complete 1P55 [AMF-NHF]
Summitcrest Elba 1M17

#Bon View New Design 1407 [AMF-NHF]
#+Vision HF Blackcap 0015
#Vermilion Dateline 7078 [AMF-NHF]
Summitcrest Elba 1F43

#CA Future Direction 5321 [AMC-NHC]
+Riverbend Blackcap S705 [AMF-NHF]
+GAR New Design 1200 [AMF-NHF]

#GAR Precision 1680 [AMC-NHC]
CA Miss Power Fix 308 [AMF]
#B/R New Design 036 [AMF-NHF]
GAR Precision 2536 [AMC-NHF]

BW	WW	YW	MILK	MARB	RE	\$W	\$F	\$G	\$B
S: +3.2	+56	+105	+32	+77	+79	+27.27	+42.11	+40.70	+75.81
D: +2.5	+46	+81	+31	+50	+71	+27.65	+21.88	+35.44	+62.35

Offered by Rimrock Production, Inc.

Selling a guaranteed heifer calf pregnancy by Summitcrest Complete 1P55 and out of the \$56,000 second high-selling female in the 2008 Bases Loaded Sale. S705 combines the ultrasound leader Future Direction with the \$320,000-valued GAR New Design 1200. Her dam is featured in the joint embryo programs of Riverbend, Express Ranches and Rodrock Cattle Company. Full sisters to the dam of S705 include New Design 1779, the \$300,000-valued feature of the joint embryo programs of C&H Cattle Company and Vintage Angus Ranch; and New Design 930, the featured Blackcap in the SandPoint program. Maternal brothers to the dam of this pregnancy include the \$96,000 Polard Farms and Express Ranches herd sire Rito 5118. Full sisters to Blackcap S705 include Blackcap S701, the \$90,000 top-selling fall heifer calf of the 2006 Riverbend sale to the partnership of Limestone, LLC and Bohi Land and Cattle; Blackcap 4173, the \$80,000 second high-selling bred cow of the 2006 Vintage Angus sale joining the joint embryo programs of Shoulderbone Plantation and Fox Run Farm; and Blackcap S703, the \$65,000 selection of Sonrise Ranches through the 2007 Riverbend sale. Maternal sisters to Blackcap S705 include New Design 5256, the \$80,000 top-selling fall yearling of the 2006 Riverbend Sale to Rutherford Ranches; Blackcap 5017, the \$200,000 top-valued and top-selling bred heifer of the 2006 Boyd Beef sale selling half interest to Werner Angus; New Design 4212, the \$171,000 top-selling fall-calving female of the 2006 Express Ranches sale to Vintage Angus Ranch; Blackcap 5042, the \$50,000 second high-selling open heifer of the 2005 Vintage sale selected by Shoulderbone Plantation; and Blackcap T079, the \$42,500 selection of Whitestone Farms and Tanner Farms through the 2007 Riverbend sale. Heifer pregnancies sold from Blackcap 1200 include the \$38,000 selection of Canyon Creek Angus through the 2006 Express sale and the \$35,000 feature of the 2007 Bases Loaded Sale to Ankony.

- Selling a guaranteed heifer calf pregnancy due 1/27/2010.

Denim and DIAMONDS

lots 14-37...

"Bred in the Purple"

...an outstanding collection of show, donor & sire prospects

A Proven Champion



Dawson Ms Blackbird 28 Lot 14



Famous 7001
Sire of Lot 14

14 Dawson Ms Blackbird 28

CALVED: 1/07/2008 • COW: +16086414 • TATTOO: 28

#SAF Fame [AMF-NHF]
#Famous 7001 [AMF]
TK Karen 1369

#Minerts Fortune 2000 [AMF-NHF]
#+SAF Royal Lass 1027
#AAR New Trend
#VDAR Karen 978

#CH 054 Rito 0100
Dawson Ms Blackbird 129
CF Ms Broker 85

#Rito 054 GDAR
#Blackbird of CH 7009
GCC Broker
CF Ms Valdeanno 211

BW	WW	YW	MILK	MARB	RE	\$W	\$F	\$G	\$B
+4.4	+36	+66	+21			+18.87	+11.46		

Offered by Patton Family Angus

Selling an interest in this popular show champion who was recently named Reserve Grand Champion Angus Female at the 2009 North American International Livestock Exposition in Louisville, Kentucky. Other successes of this impressive individual include being named Champion Angus Female and Third Overall Heifer at the 2008 Hoosier Beef Congress from over 900 head. Out of one of the top donors at Dawson Angus and sired by the many-time show champion sire Famous 7001, 28 has both the genetics and the visual excellence to solidify her donor potential and to make her sure to be in the hunt in Denver on Friday.

- Bred AI to IC SAF Sudden Impact 600. Safe in calf, due 2/24/2010.

Georgina Family



LaGrand Georgina 9263 Lot 15



Champion Hill Georgina 1949
Dam of Lot 15



LLA Georgina 419
Maternal grandam of Lots 15 and 16



MAF Georgina of Tripp
Lot 16



LaGrand Georgina 3171
Dam of Lot 16

15

LaGrand Georgina 9263

CALVED: 1/31/2009 • COW: +16419904 • TATTOO: 9263

#+SAF 598 Bando 5175 [AMF] #Bon View Bando 598 [AMF]
 +HSAF Bando 1961 [AMF-NHF] +SAF Royal Lass 1002
 +JKS Miss Cheyenne 196 +N Bar Emulation EXT [AMF-NHF]
 +Magic Meadow Miss Cheyenne
 #Whitstone Widespread MB [AMF-NHF] #N Bar Emulation EXT [AMF-NHF]
 +Champion Hill Georgina 1949 MB Rachel 2173
 LLA Georgina 419 #+GAR Sleep Easy 1009 [AMF-NHF]
 Lyons Georgina 2165

BW	WW	YW	MILK	MARB	RE	\$W	\$F	\$G	\$B
1+3.1	1+53	1+95	1+27	1+.16	1+.16	+26.31	+33.00	+13.68	+37.84

Offered by LaGrand Angus Ranch

Backed by a powerful lineage of show success, 9263 is an impressive young prospect with the look and numerical values to add value to any operation. Her dam, Champion Hill Georgina 1949, was the second top-selling heifer of the Fall 2000 Champion Hill Sale who sold half interest for \$22,000 to Robbie Smith of Tennessee and went on to be the popular Supreme Champion of the 2001 Atlantic National ROV, where she was also Grand Champion of both the Open and Junior shows. The maternal grandam of this female, LLA Georgina 419, is the famous Champion Hill foundation female who was the 2001 and 2002 ROV Embryo Dam of the Year as well as the two-time Atlantic National ROV Produce of Dam award winner. LLA Georgina 419 was also a past ROV Reserve Intermediate Heifer of the Year with an impressive list of progeny that have established her as one of the all-time great producing daughters of the high marbling and high maternal Pathfinder Sire GAR Sleep Easy 1009. 9263 blends this impressive heritage with her own flawless style and eye appeal. Destined to make her mark as a show and donor prospect, 9263 ranks in the top 10% for Milk, top 15% for WW and YW and top 20% for \$F.

- Sells open.

16

MAF Georgina of Tripp

CALVED: 3/05/2009 • COW: +16442080 • TATTOO: 93

#+PVF New Horizon 001 [AMF-NHF] #B/R New Design 323
 LaGrand Sun Dance 4211 [AMF] Hyline Ellen 410
 Partisover Burgess 616 #N Bar Emulation EXT [AMF-NHF]
 Partisover Burgess 431
 #Leachman Saughatchee 3000C [AMF-NHF] #N Bar Emulation EXT [AMF-NHF]
 +LaGrand Georgina 3171 Leachman BC 7100
 LLA Georgina 419 #+GAR Sleep Easy 1009 [AMF-NHF]
 Lyons Georgina 2165

BW	WW	YW	MILK	MARB	RE	\$W	\$F	\$G	\$B
				1+.08	1+.33				

Offered by Mogck Angus Farms

The dam of this March prospect, LaGrand Georgina 3171, was exhibited successfully by Amber Barker and LaGrand, being named Grand Champion Female at the 2004 Southwest Exposition and Livestock Show ROV, Grand Champion Female at the 2004 Dixie National ROV, Senior Heifer Calf Champion at the 2004 National Western Stock Show, Grand and Senior Calf Champion 2004 Atlantic National Junior Show and Reserve Senior Calf at the 2004 Atlantic National Female Show. Full sisters to the dam of this female include Champion Hill Georgina 3080 and LaGrand Georgina 3171, who reigned as the 2004 ROV Show Heifer of the Year and Reserve Show Heifer of the Year; and Champion Hill Georgina 2334, the \$130,000 top selling heifer from the 2001 Champion Hill sale. Three full sisters were also the top selling heifers of the 2004 Champion Hill sale, with Champion Hill Georgina 3842 the \$85,000 top selling heifer, 3958 the \$25,000 second top seller and 3811 the \$17,000 third top seller. Maternal sisters include the \$72,500 half interest Champion Hill Georgina 2121. Their dam, LLA Georgina 419, reigned as the three-time ROV Embryo Dam of the Year in 2001, 2002 and 2004.

- Sells open.

Princess Family

Herd Sire Prospect



FB C4D Sandman 925

CALVED: 4/16/2009 • BULL: +16424982 • TATTOO: 925

BC Marathon 7022 [AMF-NHF]
BC 7022 Raven 7965 [AMF-NHF]
 OCC Blackbird 796F

OCC Kirby 633K
 Gibbet Hill Mignonne E37
 #OCC Bonanza 880B
 OCC Blackbird 779A

EXAR Lutton 1831 [AMF-NHF]
+EXAR Princess 6414
 +Greens Princess 1012 [AMF-NHF]

#+Northern Improvement 4480 GF [AMF-NHF]
 EXAR Saras Dream 9809
 Greens Premium 7578
 Greens Princess 7418

BW	WW	YW	MILK	MARB	RE	\$W	\$F	\$G	\$B
1+3.5	1+56	1+95	1+24	1+.16	1+.36	+26.94	+31.83	+17.90	+46.99

Offered by Finley Brothers Cattle Company, LLC

Destined to make his mark in the show ring, Sandman also has the genetic base to make this impressive herd sire prospect a profitable investment. Full sisters include EXAR Princess 9830, who was the \$60,000 top-selling selection of Extreme Cattle Co., Enid, Okla., and EXAR Princess 9825, the \$25,000 selection of the Falleur Family of Oregon. Their dam is the many-time show favorite and champion EXAR Princess 6414, who sold for \$78,000 to Brooklyn Bell, Delaware, Okla., in the 2006 Express Ranches Big Event. 6414 was named Grand Champion Female at the 2007 Southwestern Livestock Exposition, Reserve Grand Champion at the 2007 National Western and 2007 Dixie National, Calf Champion at the 2006 American Royal and 2006 NAILE and Supreme Champion Female over all breeds at the 2007 Oklahoma Youth Expo—the world's largest junior livestock event—and finished second for ROV Show Heifer of the Year and first for Junior Heifer Calf Champion of the Year for the 2006-2007 show season. 6414's dam, Greens Princess 1012, sold in the 2004 Bases Loaded Sale for \$200,000 to Howard Genetics and The Princess Syndicate for half interest and was the ROV Dam of the Year (Embryo Transplant) for that same season. 1012 was named the 2003 National Western Stock Show Champion Female, the 2003 Western National Angus Futurity Champion Cow/Calf and the 2003 NAILE Reserve Champion Cow/Calf with the \$52,000 RF Princess 3112 at her side. 6414's grandam, the foundation Princess 7418, reigned as the Grand Champion Female of the 1999 National Western, the 1999 Western National, 1998 American Royal ROV, 1998 Western Idaho ROV and Junior shows and the 1998 Northwest Regional Junior Preview before becoming the star donor in the Green Angus Ranch herd. A maternal sister to 6414 by BR Midland, EXAR Princess 5464, sold for \$70,000 and was exhibited successfully by Brooklyn Bell to finish second in the ROV Junior Champion Female of the Year standings for the 2006-2007 show season after being named Junior Champion at the 2007 Southwestern Exposition and Reserve Junior Champion at the 2007 National Western.

Blending this proven heritage with that of one of the breed's most popular show progeny sires, BC 7022 Raven 7965, Sandman has endless potential to contribute look and function to any operation. Here is one of the most well balanced, good structured, stout made Raven sons in existence.

- Selling one-half interest, full possession.



MCS

FB C4D Sandman 925 Lot 17



March Sire

BC 7022 Raven 7965
 Sire of Lots 12 and 17



MCS

EXAR Princess 6414
 \$78,000 dam of Lot 17



EXAR Princess 6414
 Reserve Grand Champion
 Female, Denver 2007

Flush the leading ROV Cow/Calf of the Year

Denim and DIAMONDS



Greens Princess 7718 Lot 18 flush donor



7718 as Champion Cow/Calf in Kansas City



Greens Princess 7418

Dam of Lot 18 flush donor; maternal grandam of Lot 19; great-grandam of Lot 17



Greens Princess 1012

Maternal sister to Lot 18 flush donor; full sister to dam of Lot 19; maternal grandam of Lot 17

18

Greens Princess 7718 flush

CALVED: 4/14/2007 • COW: +15783166 • TATTOO: 7718

#+SAF 598 Bando 5175 [AMF]
Boyd On Target 1083 [AMF-NHF]
 +Boyd Forever Lady 7095

#Bon View Bando 598 [AMF]
 +SAF Royal Lass 1002
 #DHD Traveler 6807 [AMF-NHF]
 SVF Forever Lady 57D

#OGL Battle Cry 427 128
Greens Princess 7418
 Greens Bethany 3511

#Nichols Eureka W57
 #OGL Dusty Rose 128 902
 #+Hoff Great Western SC 456
 Greens Miss Heritage 8511

BW	WW	YW	MILK	MARB	RE	\$W	\$F	\$G	\$B
+4.1	+51	+104	+18	+14	-19	+17.71	+43.09	+7.74	+35.11

Offered by Gohr Angus, Green Angus Ranch and Savannah Marie Green

Selling a flush out of the leading ROV Cow/Calf of the Year! 7718 was Champion Cow/Calf at the Western Idaho ROV, Washington State Fair, NILE ROV and the American Royal Super ROV. The \$30,000-valued 7718 is a maternal sister to both Green's Princess 1012, who sold in the 2004 Bases Loaded Sale for \$200,000 to Howard Genetics and The Princess Syndicate for half interest, and Greens Princess 5512, whose half interest sold for \$8,500 in the 2007 Denim and Diamonds Sale. 1012 was named the 2003 National Western Stock Show Champion Female, the 2003 Western National Angus Futurity Champion Cow/Calf and the 2003 NAILE Reserve Champion Cow/Calf with the \$52,000 RF Princess 3112 at her side. A Midland daughter out of 1012 sold to Christenson's 4-D Ranch, Delaware, Okla., for \$70,000 in the 2005 Express Big Event, while another daughter by Lutton, EXAR Princess 6414, sold for \$78,000 to Brooklyn Bell, Delaware, Okla., in the 2006 Big Event. Half interest in a maternal sister to 7718 was featured in the 2005 Denim and Diamonds Sale, selling to the Rogen Family of South Dakota for \$8,000. Another maternal sister, Greens Princess 2149, is to date the most successful Future Direction daughter to grace the show ring, being named Reserve Junior Champion Female at the 2004 Western National Angus Futurity. The right to flush 7418 sold in the 2006 Denim and Diamonds Sale for \$23,000 to Express Ranches and Ray Farms.

- Selling the right to flush.

Terms of Lot 18 Flush

- Seller pays all costs associated with the flush with the exception of semen, which is the responsibility of the buyer from the bull of his choice.
- Seller guarantees a minimum of six transferable embryos. Buyer will receive up to ten embryos at the purchase price, with the buyer and seller dividing equally any embryos above ten at no additional cost.
- One-half of the purchase price is due sale day. The balance is to be paid upon confirmation of the flush and prior to the shipment of any frozen embryos.



more Princess Family



Greens Princess 8812
Lot 19



Greens Princess 9190
Lot 20



Greens Princess 8812

CALVED: 4/20/2008 • COW: +16131624 • TATTOO: 8812

#Northern Improvement 4480 GF [AMF-NHF] #TC Stockman 365
EXAR Lutton 1831 [AMF-NHF] Blackcap of RR 5367
 EXAR Saras Dream 9809 #+A&B Yukon 7150 [AMF-NHF]
 +Saras Dream
 Greens Premium 7578 +WK Ultimatum
+Greens Princess 5512 Greens Lori 5078
 Greens Princess 7418 #OGL Battle Cry 427 128
 Greens Bethany 3511

BW	WW	YW	MILK	MARB	RE	\$W	\$F	\$G	\$B
S: +2.7	+65	+114	+32	+24	-.10	+30.11	+47.96	+17.34	+52.74
D: +5.5	+57	+101	+14	+12	+0.05	+17.98	+37.54	+13.96	+43.10

Offered by Green Angus Ranch

The dam of this powerful bred heifer is a full sister to Green's Princess 1012, who sold in the 2004 Bases Loaded sale for \$200,000 to Howard Genetics and the Princess Syndicate for one-half interest. Half interest in 5512 sold for \$8,500 in the 2007 Denim and Diamonds sale. 1012 was named the 2003 National Western Stock Show Champion Female, the 2003 Western National Angus Futurity Champion Cow-Calf and the 2003 NAILE Reserve Champion Cow-Calf with the \$52,000 RF Princess 3112 at her side. A Midland daughter of 1012 sold to Christenson's 4D Ranch, Delaware, Oklahoma, for \$70,000 in the 2005 EXG Big Event while another daughter by EXAR Lutton 1831, EXAR Princess 6414, who is the dam of Lot 17 in this event, sold for \$78,000 to Brooklyn Bell, Delaware, OK, in the 2006 EXG Big Event. A right to flush the grandam of this female, 7418, sold in the 2006 Denim and Diamonds Sale for \$23,000 to Express Ranches of Oklahoma and Ray Farms of Illinois. 8812 carries on the Greens Princess tradition by being an attractive, well balanced, very powerful female who is feminine and extended through her front end.

- Selling one-half interest. Green Angus Ranch will retain full possession.
- Bred AI 6/26/2009 to Sitz Upward 307R. Safe in calf.



Greens Princess 9190

CALVED: 4/20/2009 • COW: 16445558 • TATTOO: 9190

SAV Net Worth 4200 [AMF-NHF] #SAV 8180 Traveler 004 [AMF-NHF-RDF]
+SAV Net Reward 7103 +SAV May 2410
 LLA Georgina 419 #+GAR Sleep Easy 1009 [AMF-NHF]
 Lyons Georgina 2165
 #OGL Battle Cry 427 128 #Nichols Eureka W57
+Greens Princess 9918 #OGL Dusty Rose 128 902
 Greens Bethany 3511 #+Hoff Great Western SC 456
 Greens Miss Heritage 8511

BW	WW	YW	MILK	MARB	RE	\$W	\$F	\$G	\$B
S: +4.0	+48	+93	+26	+23	+44	+21.91	+32.94	+20.21	+46.30
D: +4.5	+37	+77	+16	-.04	-.25	+14.94	+21.39	+1.92	+25.12

Offered by Green Angus Ranch

The dam of this female is a full sister Greens Princess 7418, who reigned as the Grand Champion Female of the 1999 National Western, 1999 Western National, 1998 American Royal ROV, 1998 Western Idaho ROV and Junior shows, and the 1998 Northwest Regional Junior Preview before becoming the star donor in the Green Angus Ranch herd. 7418 is the dam of the famous Princess 1012, who also possessed quite an impressive list of championships. Stemming from this famous cow line adds genetic value to this visually attractive female.

- Sells open.

Forever Lady Family

Denim and
DIAMONDS



SK Patton Forever Lady 9020

CALVED: 4/02/2009 • COW: +16413550 • TATTOO: 9020

DCC New Look 101
DCC 002 Outlook 472
#DCC Merle 002

+OCC Genesis 872G
OCC Dixie Erica 814G
+OCC Grand Prix 625G
CM Merle 750H

#Papa Equator 2928 [AMF-NHF]
+Bear Mtn Forever Lady 601
#Blackcap Lady 384 GDAR

#+Papa Power 096
#Papa Envious Blackbird 8849
#OAS Traveler 23-4 [AMF-NHF]
Lady Forever 5150 GDAR

BW	WW	YW	MILK	MARB	RE	\$W	\$F	\$G	\$B
+3.6	+39	+68	+17	+09	+16	+21.16	+12.23	+16.79	+37.66

Offered by Patton Family Angus

This April daughter of DCC Outlook offers the look and style to compete in the show ring as well as being backed by generations of genetic excellence. This deep, long bodied, broody female is correctly structured and powerful in her hip. Her phenotype combined with a balanced set of EPDs makes her a high quality show and donor prospect. The accomplishments of maternal siblings to 9020 are many. Roth Forever Lady 2706's show ring winnings include Grand Champion Female, 2003 American Royal Super ROV; Grand Champion Female, 2003 Fort Worth Super ROV; Grand Champion Female, NILE ROV; Division Champion, 2003 National Junior Angus Show; and Reserve Calf Champion to her maternal sister 2610 at the 2002 North American. A flush from 2706 sold to Ray-Mar for \$10,000 in the 2005 Denim and Diamonds Sale. 9020's dam is the extremely popular and powerful donor Bear Mtn Forever Lady 601, a daughter of the breed-leading growth sire Papa Equator 2928 produced from the Pathfinder Dam Blackcap Lady 384 GDAR. Other maternal sibs to 9020 have been highlights of past LaGrand sales and include not only the \$14,500 half interest in 2706 sold to Craig Moffitt but also the \$28,000 half interest Roth Forever Lady 2610, who herself is a many-time champion; the \$16,000 half interest LG BMAR Forever Lady 3085; the \$15,500 Roth Forever Lady 2631; and the \$20,000 half interest Roths Forever Lady 2715 as well as the \$25,000 top selling Lot 1 bull of the 2003 LaGrand bull sale, LaGrand 2617, featured in the Belle Point Ranch program. A full brother to 2706, LaGrand Roth EXT 2705, is a featured herd sire at LaGrand.

- Sells open.



SK Patton Forever Lady 9020 Lot 21



DCC 002 Outlook 472
Sire of Lot 21



Bear Mtn Forever Lady 601
Dam of Lot 21 and maternal grandam of Lot 22



Roth Forever Lady 2610
\$56,000 maternal sister to Lot 21 and to dam of Lot 22





Roth Forever Lady 2706 Donor dam of Lot 22 pregnancy; maternal sister to Lot 21



Moffitt Forever Lady M801
Full sister to Lot 22 pregnancy

22 Heifer Calf Pregnancy

due: 6/08/2010 • Progeny Pedigree

Famous 7001 [AMF]
Gambles Hot Rod
+Champion Hill Lady 703

#SAF Fame [AMF-NHF]
TK Karen 1369
#Leachman Saughatchee 3000C [AMF-NHF]
+Champion Hill Lady Stone 731

#N Bar Emulation EXT [AMF-NHF]
+Roth Forever Lady 2706
+Bear Mtn Forever Lady 601

#Emulation N Bar 5522
N Bar Primrose 2424
#Papa Equator 2928 [AMF-NHF]
#Blackcap Lady 384 GDAR

BW	WW	YW	MILK	MARB	RE	\$W	\$F	\$G	\$B
S: +4.3	+56	+95	+20	+16	+10	+31.60	+31.83	+20.25	+42.59
D: +2.9	+50	+82	+18	+15	+08	+27.15	+21.35	+17.30	+42.85

Offered by Moffitt Angus Farm

A sale highlight is the opportunity to own progeny from a many-time champion and proven cow family. Roth Forever Lady 2706's show ring accomplishments include Grand Champion Female at the 2003 American Royal Super ROV, 2003 Fort Worth Super ROV and NILE ROV; Division Champion, 2003 National Junior Angus Show; and Reserve Calf Champion to her maternal sister 2610 at the 2002 North American. A flush from 2706 sold to Ray-Mar for \$10,000 in the 2005 Denim and Diamonds Sale. Her dam is the extremely popular and powerful donor Bear Mtn Forever Lady 601, a daughter of the breed-leading growth sire Papa Equator 2928 produced from the Pathfinder Dam Blackcap Lady 384 GDAR. 601's progeny have been highlights of past LaGrand sales and include not only the \$14,500 half interest in 2706 sold to Craig Moffitt but also the \$28,000 half interest Roth Forever Lady 2610, who herself is a many-time champion; the \$16,000 half interest LG BMAR Forever Lady 3085; the \$15,500 Roth Forever Lady 2631; and the \$20,000 half interest Roths Forever Lady 2715 as well as the \$25,000 top selling Lot 1 bull of the 2003 LaGrand bull sale, LaGrand 2617, now featured in the Belle Point Ranch program. A full brother to 2706, LaGrand Roth EXT 2705, is a featured herd sire at LaGrand. Females out of this proven donor have averaged over \$10,000 in private treaty sales.

Combining this powerful cow family with the proven success of Gambles Hot Rod, this mating should prove to meet both show ring and production needs. A full sister to this mating was the many-time show champion Moffitt Forever Lady M801, whose accomplishments include 2009 National Junior Angus Show Division Champion, 2009 Iowa State Fair Champion Heifer, Champion Owned Female at the 2009 Central Regional Angus Show, Champion Heifer at the Iowa Angus Open Summer Show, Champion ISU Block and Bridle, Champion ISU AGR Show and Champion Angus Female at the 2009 Iowa Beef Expo.

- Selling a guaranteed heifer calf pregnancy due 6/08/2010.





Rogens Forever Lady 984 Lot 23



VAR Forever Lady 4304
Her descendants sell as Lots 23 and 24



LaGrand Forever Lady 3139
Full sister to dam of Lot 23



Forever Lady 5309
\$95,000 maternal sister to dam of Lot 23



LaGrand Forever Lady 9090
Lot 24

23 Rogens Forever Lady 984

CALVED: 3/04/2009 • COW: +16365414 • TATTOO: 984

#SAV 8180 Traveler 004 [AMF-NHF-RDF] #Sitz Traveler 8180 [AMF-NHF]
+SAV 004 Predominant 4438 [AMF-NHF] +Boyd Forever Lady 8003
 SAV Emblynette 1182 #+SAF 598 Bando 5175 [AMF]
 #SAV Emblynette 7319

#Summitcrest High Prime 0H29 [AMF-NHF] #Gardens Prime Time [AMF-NHF]
+EXAR Forever Lady 3757 Summitcrest Missie 2F55
 VAR Forever Lady 4304 #GDAR Executive 727 [AMF-NHF]
 #Blackcap Lady 384 GDAR

BW	WW	YW	MILK	MARB	RE	\$W	\$F	\$G	\$B
					I+ .28				I+ .40

Offered by Rogen Angus

This top show and donor prospect descends from the legendary Forever Lady 4304. 4304 began early in life writing her own chapter in Angus history, capturing Reserve Grand Champion Female honors at the 1996 National Western Stock Show. Her legacy has carried on through her progeny. Daughters of 4304 include the \$95,000 top-selling show heifer prospect of the 2005 Big Event Sale that went on to sell half interest at private treaty for \$100,000 after being chosen Reserve Grand Champion of the 2006 National Western as a heifer calf. That same female, Forever Lady 5309, was named Grand Champion at the 2007 Western National Angus Futurity and sold a flush to Stevenson Basin in the 2007 EXAR Big Event for \$75,000. The long list of other high-valued progeny from 4304 include the \$85,000 top-selling female of the 2006 Honor Roll Sale at Express, the \$51,000 Lot 1A heifer of the record-setting 2006 Big Event Sale and a \$20,000 selection of the Schnoor family from California who went on to be a division champion at the 2006 National Junior Angus Show. 4304 is a breed-leading source of added muscle genetics who had 59 progeny scanned with an impressive average URE ratio of 105.

- Sells open.

24 LaGrand Forever Lady 9090

CALVED: 1/13/2009 • COW: 16361756 • TATTOO: 9090

#Sitz Traveler 8180[AMF-NHF] #GDAR Traveler 71 [AMF-NHF]
SAV Final Answer 0035 [AMF-NHF] Sitz Everelda Entense 1137
 SAV Emulous 8145 #Bon View Bando 598 [AMF]
 SAV Sky Emulous 2124

#G13 Structure [AMF-NHF] #TC Stockman 365
+LaGrand Forever Lady 7918 #G13 Traveler 9428
 Vian Forever Lady 2101 #+SAF 598 Bando 5175 [AMF]
 +Vian Forever Lady 820

BW	WW	YW	MILK	MARB	RE	\$W	\$F	\$G	\$B
I+2.4	I+.57		I+23	I+.21	I+.33				

Offered by LaGrand Angus Ranch

This top show and donor prospect descends from the legendary Forever Lady 4304. 4304 began early in life writing her own chapter in Angus history by capturing Reserve Grand Champion Female honors at the 1996 National Western Stock Show. Her legacy has carried on through her progeny. Daughters of 4304 include the \$95,000 top-selling show heifer prospect of the 2005 Big Event Sale that went on to sell half interest at private treaty for \$100,000 after being chosen Reserve Grand Champion of the 2006 National Western as a heifer calf. That same female, Forever Lady 5309, was named Grand Champion at the 2007 Western National Angus Futurity and sold a flush to Stevenson Basin in the 2007 EXAR Big Event for \$75,000. The long list of other high-valued progeny from 4304 include the \$85,000 top-selling female of the 2006 Honor Roll Sale at Express, the \$51,000 Lot 1A heifer of the record-setting 2006 Big Event Sale and a \$20,000 selection of the Schnoor family from California who went on to be a division champion at the 2006 National Junior Angus Show. 4304 is a breed-leading source of added muscle genetics who had 59 progeny scanned with an impressive average URE ratio of 105.

- Sells open.

Elite Show Heifer Prospects



LaGrand Lena 9045
Lot 25



LaGrand Lena 4964
Maternal grandam of Lot 25



LaGrand Burgess 9195
Lot 26



Partisover Burgess 616
Dam of Lot 26

25 LaGrand Lena 9045

CALVED: 1/09/2009 • COW: 16419898 • TATTOO: 9045

#Sitz Traveler 8180 [AMF-NHF]
SAV Final Answer 0035 [AMF-NHF]
SAV Emulous 8145

#GDAR Traveler 71 [AMF-NHF]
Sitz Everelda Entense 1137
#Bon View Bando 598 [AMF]
SAV Sky Emulous 2124
#BAAR Russ 2424
#GDAR SVF Russ 184B
N Bar Primrose 2424
#Papa Equator 2928 [AMF-NHF]
Double G Esso Lena 047

+BAAR Russ 2424
LaGrand Lena 7685
+LaGrand Lena 4964

BW	WW	YW	MILK	MARB	RE	\$W	\$F	\$G	\$B
+1.4	+50	+83	+20	+22	+20	+29.89	+22.31	+18.01	+39.06

Offered by LaGrand Angus Ranch

9045 is the first in this group of impressive Final Answer daughters. This yearling blends style and visual quality with a solid genetic profile. She is long and extended through her front end while offering the power and dimension needed to be a top show and donor prospect. If you want to grab hold of one that will compete at any level, look no further. Ranks in the top 10% of non-parent Angus females for \$W.

- Sells open.

26 LaGrand Burgess 9195

CALVED: 1/24/2009 • COW: 16419903 • TATTOO: 9195

#Sitz Traveler 8180 [AMF-NHF]
SAV Final Answer 0035 [AMF-NHF]
SAV Emulous 8145

#GDAR Traveler 71 [AMF-NHF]
Sitz Everelda Entense 1137
#Bon View Bando 598 [AMF]
SAV Sky Emulous 2124

#N Bar Emulation EXT [AMF-NHF]
Partisover Burgess 616
Partisover Burgess 431

#Emulation N Bar 5522
N Bar Primrose 2424
#QAS Traveler 23-4 [AMF-NHF]
+Partisover Burgess 162

BW	WW	YW	MILK	MARB	RE	\$W	\$F	\$G	\$B
+0.2	+57	+102	+21	+19	+27	+30.75	+38.58	+16.90	+41.79

Offered by LaGrand Angus Ranch

9195 is a maternal sister to the popular show champion LaGrand Sun Dance 4211, who sold in the 2005 LaGrand bull sale for \$29,000 to Styles Plainview Angus and the Sundance Group for two-thirds interest and full possession. Sun Dance has claimed many grand champion banners, including the 2006 American Royal, the World Beef Expo (where he was also Supreme Champion) and the South Dakota and Iowa state fairs.

The dam of 9195 is from the same family that produced JLB Exacto 416. This is a powerfully constructed, feminine fronted female whose look from the side and added growth complement her genetic value. This show and donor prospect ranks in the top 5% of non-parent Angus females for WW and YW and the top 10% for \$W and \$F.

- Sells open.



LaGrand Sun Dance 4211
Maternal brother to Lot 26



LaGrand Blackcap 9305 Lot 27



LaGrand Lass 9348
Lot 29



MCS



K Bar D Elaines Hot Gossip Lot 28



Rito Revenue 5M2
of 2536 Pre
Sire of Lot 29

27 LaGrand Blackcap 9305

CALVED: 2/06/2009 • COW: 16419906 • TATTOO: 9305

#Sitz Traveler 8180 [AMF-NHF]
SAV Final Answer 0035 [AMF-NHF]
SAV Emulous 8145

#GDAR Traveler 71 [AMF-NHF]
Sitz Everelda Entense 1137
#Bon View Bando 598 [AMF]
SAV Sky Emulous 2124

#+WCC Special Design L309 [AMF-NHF]
+LaGrand Blackcap 5840
WAF Blackcap 210

#Bon View New Design 878 [AMF-NHF]
N Bar Primrose 2424
#GDAR Rito 596 LT [AMF-NHF]
Top Blackcap 03

BW	WW	YW	MILK	MARB	RE	\$W	\$F	\$G	\$B
1+1.0	1+49	1+89	1+20	1+.26	1+.11	+27.93	+28.55	+18.92	+39.73

Offered by LaGrand Angus Ranch

A favorite of many who have seen this year's LaGrand National Western lineup, this moderate framed Final Answer daughter is bold made and deep bodied with the volume and structural advantages needed to make a flawless show and donor prospect. Blending visual appeal with a solid set of EPDs, this February prospect offers the unique combination of look and performance without sacrificing functional ability.

- Sells open.

28 K Bar D Elaines Hot Gossip

CALVED: 2/04/2009 • COW: 16380190 • TATTOO: K13W

#+OCC Emblazon 854E
+BC Big Daddy 702-5
Gibbet Hill Mignonne E37

#DHD Traveler 6807 [AMF-NHF]
Dixie Erica of CH 1019
#Papa Equator 2928 [AMF-NHF]
Gibbet Hill Mignonne TR 29

#Stevenson Fortune 425C [AMF]
K Bar D Elaines Haute Dam
K Bar D Indiglo Elaine

Gardens Fortune 9213 S2
#JRS Enchantress 235Z
#+Krugerrands Moneyline
WK Elaine 2261

BW	WW	YW	MILK	MARB	RE	\$W	\$F	\$G	\$B
1+1.3	1+52	1+88	1+14	1+.25	1+.22	+28.04	+26.42	+21.61	+41.18

Offered by K Bar D

Big Daddy progeny have been in demand, and you will see why when you lay eyes on Elaines Hot Gossip, who descends from one of the top cow families in the K Bar D program, backed by generations of performance-driven females. Melody Elaine, a maternal sister to the dam of K13W, was shown successfully, claiming Champion Female honors at the Boise ROV and Reserve Female at the Oregon State Fair ROV; Elegant Elaine was the high selling bred heifer in the 2008 Denim and Diamonds. The Elaine family has also produced multiple herd bulls. K Bar D Soul 22S, the \$10,250 high selling lot in the 2007 Leachman sale, is now a performance leader at Joe Berry Angus in Madras, Ore., and K Bar D Certified Meatmaker 4S, lead bull in our 2007 Denver pen that sold to Bentley Greb Angus, Lawton, Okla., both posted over 1550-pound yearling weights. Hot Gossip combines eye appeal with depth of body and structural power to yield a multi-dimensional show and donor prospect.

- Sells open. K Bar D would like to retain the right to eight viable embryos by a sire of mutual consent at their expense and the new owner's convenience.

29 LaGrand Lass 9348 AMF

CALVED: 2/13/2009 • COW: 16419910 • TATTOO: 9348

#GAR Predestined [AMF-NHF]
+Rito Revenue 5M2 of 2536 Pre [AMF-NHF]
GAR Precision 2536 [AMC-NHF]

#B/R New Design 036 [AMF-NHF]
#+GAR EXT 4206
#GAR Precision 1680 [AMC-NHC]
+GAR EXT 2104

BC Marathon 7022 [AMF-NHF]
LaGrand Lass 6231
+LaGrand Lass 4988 [AMC-NHF]

OCC Kirby 633K
Gibbet Hill Mignonne E37
#Famous 7001 [AMF]
+GAR Precision 2445

BW	WW	YW	MILK	MARB	RE	\$W	\$F	\$G	\$B
1+3.6	1+61	1+99	1+25	1+.57	1+.64	+29.44	+33.91	+32.29	+62.32

Offered by LaGrand Angus Ranch

This Rito Revenue daughter is a long, extended fronted heifer with the body type and power to add value to any operation. Rito Revenue is one of the new additions to the ABS sire lineup and is known for being a son of the breed's No. 1 highly proven bull for \$B; his dam is the breed's long time No. 1 female for \$B, and he is a moderate framed, heavy muscled bull with a 136 IMF ratio and 124 REA ratio who ranks in the top 5% of the breed for nine traits.

This donor prospect stems from one of the most prolific producers of carcass merit in the LaGrand program, GAR Precision 2445, who posts phenomenal progeny ratios of 40@103 for %IMF and 40@107 for REA. The ratios of her natural progeny are as impressive with 4@107 for WW and 5@102 for WW. 9348 ranks among non-parent females in the top 1% for RE, top 2% for YW, top 3% for \$B, top 10% for YW and \$G, top 15% for Marb, \$W and \$F and top 20% for Milk.

- Sells open.

February Prospects



Styles Proud Lassie K53
Lot 30



LaGrand PV Black Velvet 5103
Sire of Lot 30



Lazy JB Blackcap Lassie 945
Lot 31

30 Styles Proud Lassie K53 AMF-NHF

CALVED: 2/21/2009 • COW: 16402711 • TATTOO: K53

#G13 Structure [AMF-NHF]
LaGrand PV Black Velvet 5103 [AMF]
Roth Formera 9199 [AMF]

#TC Stockman 365
#G13 Traveler 9428
VNAR Fame 87G
North Fork Formera 7069

+Boyd Beef Maker 3069 [AMC-NHF]
Plainview Proud Lassie F16 [AMF-NHF]
Plainview Proud Lassie D99

#CA Future Direction 5321 [AMC-NHC]
+Boyd Forever Lady 7120
+B/R New Revenue 0149
Plainview Proud Lassie 48V

BW	WW	YW	MILK	MARB	RE	\$W	\$F	\$G	\$B
+4.0	+44	+77	+23	+27	+27	+22.73	+18.80	+27.50	+44.72

Offered by Styles Angus, Inc.

Sired by the show ring champion Black Velvet, this impressive February show prospect has the look and attractiveness to be just as successful as her sire. Stout made, high volumed and clean fronted is the foundational makeup of this sure champion. Complemented with added shape and dimension should prove to be a unique combination of added value for both the show ring and future production as well.

- Sells open.

31 Lazy JB Blackcap Lassie 945

CALVED: 2/27/2009 • COW: 16431730 • TATTOO: 945

+Connealy Network [AMF]
WK Uptown
#WK Miss Angus 4587 [NHF]

#+GAR Grid Maker [AMF-NHF]
Eigence Plus of Conanga
EXAR Exceptional 1505
#WK Miss Angus 1403

BT New Design 32P
Lazy JB Blackcap Lassie 745
Lazy JB Stman Faith 325

#Bon View New Design 878 [AMF-NHF]
BT Erica 345M
+WK Stockman 0026
Lazy JB Faith 308

BW	WW	YW	MILK	MARB	RE	\$W	\$F	\$G	\$B
+2.6	+45	+86	+19	+32	+20	+22.77	+27.12	+25.49	+45.23

Offered by Lazy JB Angus

Here is an exciting show and donor prospect from one of Colorado's premier Angus ranches. This late February heifer is from the mating of Uptown, a Connealy Network son, and a daughter of BT New Design 32P, the top selling 878 son from the last Beartooth Annual Bull Sale. WK Uptown 7302 was selected as the top selling bull in his sire group for \$13,500 at the 2007 WK Bull and Horse Sale. Uptown was used as an AI sire at Whitestone Krebs, Lazy JB and Rock'n'R. His first calves have very modest birth weights and impressive phenotype. He is backed by WK Miss Angus 4587, who is a top producer in the Whitestone Krebs cow herd with progeny ratios of BW 3@99, WW 5@106, YW 3@104 and 3@105 for both IMF and RE. Uptown's paternal grandam is the mother of the popular ABS sire Connealy Lead On. To date, Uptown's mother has never weaned a calf that weighed less than 765 pounds or that scanned with less than a 15 square inch ribeye!

This is your chance to own an impressive young female. 945 combines pedigree performance with the look and visual appeal Lazy JB cattle are known for.

- Sells open.

Empress Family



32 PF 410 Empress 9124

CALVED: 3/04/2009 • COW: 16414460 • TATTOO: 9124

#Bon View New Design 208 [AMF-NHF] #B/R New Design 036 [AMF-NHF]
TC Total 410 [AMF-NHF] #Bon View Erica 443
 +TC Erica Eileen 2047 [NHC-AMF] #Twin Valley Precision E161 [NHC-AMF-RDF]
 #+TC Erica Eileen 5116
 #N Bar Emulation EXT [AMF-NHF] #Emulation N Bar 5522
+OSU Empress 5179 N Bar Primrose 2424
 +OSU Empress 6188 #+Krugerrands Moneyline
 +DF Empress 6079

BW	WW	YW	MILK	MARB	RE	\$W	\$F	\$G	\$B
+2.9	+56	+104	+26	+37	+32	+25.75	+41.06	+26.43	+55.81

Offered by Pollard Farms, LLC

The dam of 9124 was selected to join the donor herd at Pollard Farms as the \$11,000 top selling two year old in the 2007 Cowboy Classic Sale at Oklahoma State University. A maternal sister to 9124 by DT26 was the \$7,500 selection of Express Ranches out of the 2009 Cowboy Classic. In the 1990s, the famous great-grandam of 9124, DF Empress 6079, gained national recognition as a result of producing several sons which would become grand champions in the show ring. This cow was the Angus Roll of Victory Embryo Transplant Dam of the Year in 1994. Her sons include OSU Precision, Grand Champion Bull at the All-American Angus Futurity and Reserve Champion at the North American in 1993; OSU Ultra, Reserve Grand Champion Angus Bull at Denver in 1994 before being named Grand Champion at the National Western in 1995; and OSU Panama, Grand Champion Bull at the 1996 All-American Angus Futurity and Tulsa State Fair and at the 1997 Western National Futurity in Reno, Nev.

Empress 6079 was the first female to produce each of the "Best Six Head" at the North American, in 1993, and all three bulls in the Champion Pen of Three at the 1994 National Western Angus Show. In 1997, Oklahoma State exhibited the Champion Pen of Three Angus bulls at the National Western, which included one direct son of 6079 and one grandson. In OSU's most recent Denver Champion Pen of Three, exhibited at the 2006 National Western, all three bulls were embryo sibs produced by a daughter of 6079. Another grandson of 6079 was Reserve Grand Champion Angus Bull at the 2007 Tulsa State Fair. The lead bull in the 2009 Reserve Champion Pen of Three Bulls at the National Western, OSU Currency 8173, also descends from this famous matron. To date, some of the most productive, highest income producing females in the OSU purebred herd are 6079 daughters and granddaughters.

This TC Total daughter ranks in the top 4% of non-parent Angus females for YW and \$F, top 10% for WW and \$B and top 15% for Milk.

- Sells open.



PF 410 Empress 9124 Lot 32



OSU Empress 5179
Dam of Lot 32



OSU Empress 8104
\$7,500 maternal sister to Lot 32



Show & Donor Prospects



Denim and
DIAMONDS



Malsons Sunset Galaxie 43W
Lot 33



33 Malsons Sunset Galaxie 43W

CALVED: 3/11/2009 • COW: +16391053 • TATTOO: 43W

OCC Legend 616L
+BC Lookout 7024 [AMF-NHF]
Gibbet Hill Mignonne E37

#OCC Emblazon 854E
OCC Blackbird 632J
#Papa Equator 2928 [AMF-NHF]
Gibbet Hill Mignonne TR 29

+EXAR New Look 2971 [AMF-NHF]
+Lafin's Sunset Galaxie 5806
+Lafins Galaxie 2008

#Bon View New Design 1407 [AMF-NHF]
N Bar Primrose 2424
#Bon View Bando 598 [AMF]
+Lafins Galaxie 758 E

BW	WW	YW	MILK	MARB	RE	\$W	\$F	\$G	\$B
+1.9	+49	+87	+17	+36	+54	+26.18	+26.58	+27.73	+52.45

Offered by Malson Angus

43W is a super stout, big bodied female that combines shape and dimension with the look and feminine front end of an outstanding show and donor prospect. To complement all this, 43W is good structured and functional in her design while being progressive in her genetic traits. 43W traces back to the popular show champion Lafins Galaxie 758 E while having the look and style of her sire, BC Lookout 7024. 43W ranks in the top 3% of non-parent Angus females for RE and the top 20% for \$B.

- Sells open.

Lafins Galaxie 758 E
Great-grandam of Lot 33



FF Fantasy W172
Lot 34

34 FF Fantasy W172

CALVED: 4/03/2009 • COW: 16395061 • TATTOO: W172

SAV Net Worth 4200 [AMF-NHF]
Connealy Revenue 7289
#Hyannis of Conanga 577

#SAV 8180 Traveler 004 [AMF-NHF-RDF]
+SAV May 2410
Connealy Dateline 316
#Connealy Bando 133

#Bon View New Design 878 [AMF-NHF]
+FF Fantasy S53
FF Fantasy A94

#B/R New Design 036 [AMF-NHF]
Bon View Gammer 85
BLR EXT 6020
FF Fantasy Y12

BW	WW	YW	MILK	MARB	RE	\$W	\$F	\$G	\$B
+2.9	+55	+89	+28	+29	+14	+30.03	+26.26	+18.85	+42.08

Offered by Flesch Angus

This young show and donor prospect has already proven her ability in the show ring by winning her class at the 2009 NILE in Billings, Mont. Sired by the top selling Net Worth son at the 2007 Connealy bull sale, Connealy Revenue, W172 offers the same shape and power while remaining well balanced and attractive from the profile. W172 ranks in the top 10% of non-parent females in the breed for WW, Milk and \$W. Take advantage of this opportunity for solid performance traits with the look and style to be your next show champion.

- Sells open.

Bardot Family

35 Dameron Bardot 9128

CALVED: 4/19/2009 • COW: 16423768 • TATTOO: 9128

Connealy Product 568
Connealy Final Product [AMF]
 #Ebonista of Conanga 471

#GAR Retail Product [AMF-NHF]
 Pride Fine of Conanga 566
 #Connealy Deep Canyon 454
 Ebonisa of Conanga 5469

#+PVF New Horizon 001 [AMF-NHF]
+Dameron Bardot 410
 +Dameron Bardot 631

#B/R New Design 323
 Hyline Ellen 410
 #Krugerrand of Donamere 490 [AMF-NHF]
 Star Diva Bardot 488

BW	WW	YW	MILK	MARB	RE	\$W	\$F	\$G	\$B
1+2.1	1+51	1+94	1+25	1+.25	1+.21	+26.92	+32.78	+19.39	+42.61

Offered by Dameron Angus Farm

Dameron Bardot 9128 traces back to the foundation Bardot cow in the Dameron herd, Star Diva Bardot 488. Several daughters, granddaughters and great-granddaughters of 488 have been sale features and show champions across the country. A daughter of this proven donor and the ten-time All-American Premier Sire Leachman Saugahatchee 3000C, Dameron Bardot 689, was the top-selling female of the 2006 Dameron sale. Another daughter sold half interest for \$45,000 for a \$90,000 valuation as the top-selling female of the 2006 Dameron sale and went on to be a popular champion for Andrew Foster, including being named the 2007 All-American Reserve Grand Champion. 9128 is from the same family as the North American International Grand Champion Bull Dameron R&W New Deal 446 and a long line of other successful champions. Two other descendants of the Bardot family were featured in the 2009 Dameron sale, including the \$11,500 selection of Tanner Lindorf, Niles, Mich.

- Sells open.



Dameron Bardot 9128 Lot 35



Connealy Final Product
 Sire of Lot 35



Dameron Bardot 689
 Maternal sister to grandam of Lot 35



Dameron R&W New Deal 446
 Descends from the same cow family as Lot 35

Show & Donor Prospects

Denim and
DIAMONDS



Greens Kate 9162
Lot 36



LCB Powerball 3106R
Sire of Lot 36;
maternal grandsire of Lot 37



Greens Lassie 9701
Lot 37

36 Greens Kate 9162

CALVED: 4/12/2009 • COW: 16440109 • TATTOO: 9162

LCC New Standard [AMF-NHF]
+LCB Powerball 3106R
Bon View Erica 256

#WK Gunsmoke
+Greens Kate 0035
Greens Kate 7021

#Bon View New Design 1407 [AMF-NHF]
LCC Sunset K3118
#RR 9440 Scotch Cap 1483 [AMF-NHF]
#Bon View Erica 443
#OGL Battle Cry 427 128
#WK Bonnie 2041
#Hoff Ultra SC 108 [AMF-NHF]
Greens Kate 1721

BW	WW	YW	MILK	MARB	RE	\$W	\$F	\$G	\$B
+1.4	+54	+97	+21			+28.61	+34.64		

Offered by Green Angus Ranch

This stout April show prospect combines numerical growth and performance with added shape and power while possessing outcross genetics. 9162 is a daughter of the show champion and popular Green Angus Ranch herd sire Powerball, who is out of a maternal sister to Bon View New Design 208. Powerball is stacked with generations of performance. Offering an impressive spread from birth to yearling, he is a massive, good structured bull with a unique blend of power and performance to generate profit return in his progeny. Tracing back to EXT, 1407 and 036, Powerball is destined to leave his mark in the Angus breed. Powerball has been used to add value to the Green Angus herd as well as the Dikoff and Leachman herds. This Denim and Diamonds show prospect by Powerball exemplifies the style, power and function his calves are known for.

- Sells open.

37 Greens Lassie 9701

CALVED: 5/08/2009 • COW: 16445720 • TATTOO: 9701

SAV Final Answer 0035 [AMF-NHF]
HARB Pendleton 765 JH [AMF-NHF]
#HARB Black Lady 375 JH

+LCB Powerball 3106R
Greens Lass 7810
Greens Lass 8610

#Sitz Traveler 8180 [AMF-NHF]
SAV Emulous 8145
#HARB High Plains 975 JH [AMF-NHF]
#HARB Black Lady 073 JH

LCC New Standard [AMF-NHF]
Bon View Erica 256
Greens Cash 6813
Greens Ester 6110

BW	WW	YW	MILK	MARB	RE	\$W	\$F	\$G	\$B
S: -3.6	+94	+139	+27	+22	+00	+45.95	+63.16	+9.55	+43.90
D: +0.9	+52	+91	+21			+29.58	+29.38		

Offered by Green Angus Ranch

This May prospect showcases the potential and eye appeal needed for show ring success while combining the outcross genetics of Pendleton and Powerball. 9701's sire, Pendleton, currently posts the highest WW EPD in the Main Sire Supplement and the fifth highest YW EPD while maintaining the 18th lowest BW EPD.

9701 is a granddaughter of the great foundation Greens Lass cow, who traces back to the famous Shoshone Ester cow family. Greens Lass 8610 was the Junior Champion Female at the 1999 Montana State Fair. The Greens Lass cow family is one of the top producing cow families for Green Angus Ranch. A great foundation female here!

- Sells open.

Forever Lady 277

Right to Flush

Denim and
DIAMONDS



Maple Lane Forever Lady 277 Lot 38 flush donor

38

Maple Lane Forever Lady 277 flush

CALVED: 9/01/2002 • COW: +14343091 • TATTOO: 277

#DHD Traveler 6807 [AMF-NHF]
#SS Traveler 6807 T510 [AMF]
#SS Miss Hi Spade A114

#QAS Traveler 23-4 [AMF-NHF]
#Bemindful Maid DHD 0807
#Hoff Hi Spade SC 491
SS Miss Rito 0H3 5H9

#+Skarship Saratoga
+SVF Forever Lady 1120
#Forever Lady 163 GDAR

#Pine Drive Big Sky [AMF-NHF]
WAR Elba 43J
#QAS Traveler 23-4 [AMF-NHF]
Forever Lady 65 GDAR

BW	WW	YW	MILK	MARB	RE	\$W	\$F	\$G	\$B
+1.7	+43	+87	+20	+.20	-.11	+22.48	+28.87	+19.10	+32.16

Offered by Patton Family Angus

Selling a flush from the dam of the popular young sire LaGrand MAF Antidote 5775, the 2007 Supreme Champion Bull at the Black Hills Stock Show who went on to top the sale at \$28,000 to Mogck's Angus Farm of Tripp, S.D.

A direct daughter of the Pathfinder Sire SS Traveler 6807 T510 and the \$2 million-producing SVF Forever Lady 1120, 277 is making her way into the limelight as one of the most powerful females ever produced by the All-American Futurity Grand Champion Cow SVF Forever Lady 1120. The donor dam of this featured flush was selected as the Indiana State Fair Senior Heifer Calf Champion and stems from a long list of maternal sisters that topped numerous sales throughout the country. The granddam of this featured flush is a past All-American Reserve Grand Champion Cow and a past All-American Produce of Dam Winner and one of the breed's rare million dollar producers. A full sister to the dam of this flush was the \$23,000 top-selling pregnancy of the 2001 Eaglestone Farm Sale, and maternal sisters include an impressive array of top-selling individuals. The featured donor dam has a progeny production record of WR 2@102 and YR 1@107.

- Selling the right to flush.

Terms of Lot 38 Flush

- Seller pays all costs associated with the flush with the exception of semen, which is the responsibility of the buyer from the bull of his choice.
- Seller guarantees a minimum of six transferable embryos. Buyer will receive up to ten embryos at the purchase price, with the buyer and seller dividing equally any embryos above ten at no additional cost.
- One-half of the purchase price is due sale day. The balance is to be paid upon confirmation of the flush and prior to the shipment of any frozen embryos.



LaGrand MAF Antidote 5775
\$28,000 son of Lot 38 flush donor



SVF Forever Lady 1120
Dam of Lot 38 flush donor



Plainview Pride C123

Embryos or Right to Flush

39a C123 embryos

Progeny Pedigree

#+Northern Improvement 4480 GF [AMF-NHF] #TC Stockman 365
EXAR Lutton 1831 [AMF-NHF] Blackcap of RR 5367
 EXAR Saras Dream 9809 #+A&B Yukon 7150 [AMF-NHF]
 +Saras Dream

Roth Famous 051 #Famous 7001 [AMF]
Plainview Pride C123 Curtis Lucy Pride 849
 Plainview Pride 2T E&B 711 Oscar 350
 #Plainview Pride 106D

	BW	WW	YW	MILK	MARB	RE	\$W	\$F	\$G	\$B
S:	+2.7	+65	+114	+32	+24	-.10	+30.11	+47.96	+17.24	+52.65
D:	+3.3	+32	+ 53	+15	+18	+.21	+20.23	+1.32	+19.14	+30.74

Offered by Styles Angus, Inc.

- Nine frozen embryos (buyer's choice).

or

39b Plainview Pride C123 flush

CALVED: 3/10/2002 • COW: 14277276 • TATTOO: C123

#Famous 7001 [AMF] #SAF Fame [AMF-NHF]
Roth Famous 051 TK Karen 1369
 Curtis Lucy Pride 849 #Krugerrand of Donamere 490 [AMF-NHF]
 #Hyline Lucy Pride 651

E&B 711 Oscar 350 #+GDAR Oscar 711 [AMF-NHF]
Plainview Pride 2T Lady Eileenmere E515
 #Plainview Pride 106D Windac Shotgun 2201
 Plainview Pride 113B

	BW	WW	YW	MILK	MARB	RE	\$W	\$F	\$G	\$B
	+3.3	+32	+53	+15	+18	+.21	+20.23	+1.32	+19.14	+30.74

Offered by Styles Angus, Inc.

- Right to flush (buyer's choice).

Selling choice of nine full sib embryos to the popular show calf sires "Lut" and "Johnny Ringo" or the right to flush their dam to the bull of the buyer's choice. C123 is a proven donor for Styles Angus, being the dam of the \$17,500 "Lut" and the \$16,500-valued "Johnny Ringo"—who have both sired their share of show champions. A daughter of C123, J34, sold half interest for \$15,000 and won her class at the 2009 National Western and at the Texas State Junior Heifer Show for Stephanie Lastovica.

Terms of Lot 39B Flush

- Seller pays all costs associated with the flush with the exception of semen, which is the responsibility of the buyer from the bull of his choice.
- Seller guarantees a minimum of six transferable embryos. Buyer will receive up to ten embryos at the purchase price, with the buyer and seller dividing equally any embryos above ten at no additional cost.
- One-half of the purchase price is due sale day. The balance is to be paid upon confirmation of the flush and prior to the shipment of any frozen embryos.



MCS

Plainview Pride C123 Lot 39 donor dam



Plainview Pride J34

\$30,000-valued daughter of C123 and maternal sister to Lot 39A embryos



Plainview Lutton E102 "Lut"

These two sons of the Lot 39B flush donor are full brothers to the Lot 39A embryos.



Plainview Lutton G35
"Johnny Ringo"

Denim and DIAMONDS

Sale proceeds from Lot 40 to benefit:



X-C Donation Lot from Silver Spur Ranches

40

Silver Spur Ranch has divisions in Wyoming, Colorado and New Mexico. Their registered Angus herd is located at Kiowa, Colorado, and serves as a seedstock supplier for all of their commercial operations. Silver Spur Ranch annually retains ownership in several thousand head of Angus-based cattle.

This is a unique opportunity for the buyer to select one female from the 2010 Silver Spur Ranch calf crop (approximately 150 heifers to select from). Calves will be sired by Connealy Contrast, Woodhill Mainline, SAV Bismarck, BC Maverick, B3R Tender Ten R065, Mytty in Focus and Connealy Reflection. With an emphasis on muscle, phenotype and soundness, the Silver Spur Ranch females can work in the show ring as well as a performance-oriented operation.

"We welcome the opportunity to support the 2010 National Junior Angus Show through this heifer donation. The NJAA offers young people learning opportunities that will be valuable throughout their lives," says Silver Spur's Marketing Director, Cheramie Viator.



1019 Waterwood Pkwy, Unit D
Edmond, OK 73034

FIRST CLASS MAIL

TIME DATED MATERIAL: DO NOT DELAY

PRE-SORTED
FIRST CLASS
U.S. POSTAGE
PAID
PERMIT #1541
OKLA. CITY
OKLAHOMA



Denim and DIAMONDS

*Join us at 4 p.m., Wednesday, January 13, in the
National Western Stock Show Beef Palace Auction
Arena for an exceptional offering of proven Angus
genetics as well as champions for the future!*

New Date New Time New Location